

MC38-hSEMA4D

Strain Information

Cat. NO.	NM-S13-TM68
Cell Line	MC38- <i>Sema4d</i> ^{em1(hSEMA4D)Smoc}
Strain State	Validation of target gene expression completed
Model	The endogenous mouse <i>Sema4d</i> gene was replaced by human SEMA4D gene.
Description	*Literature published using this strain should indicate: MC38-hSEMA4D cell line (Cat. NO. NM-S13-TM68) was purchased from Shanghai Model Organisms Center, Inc..

Validation Data

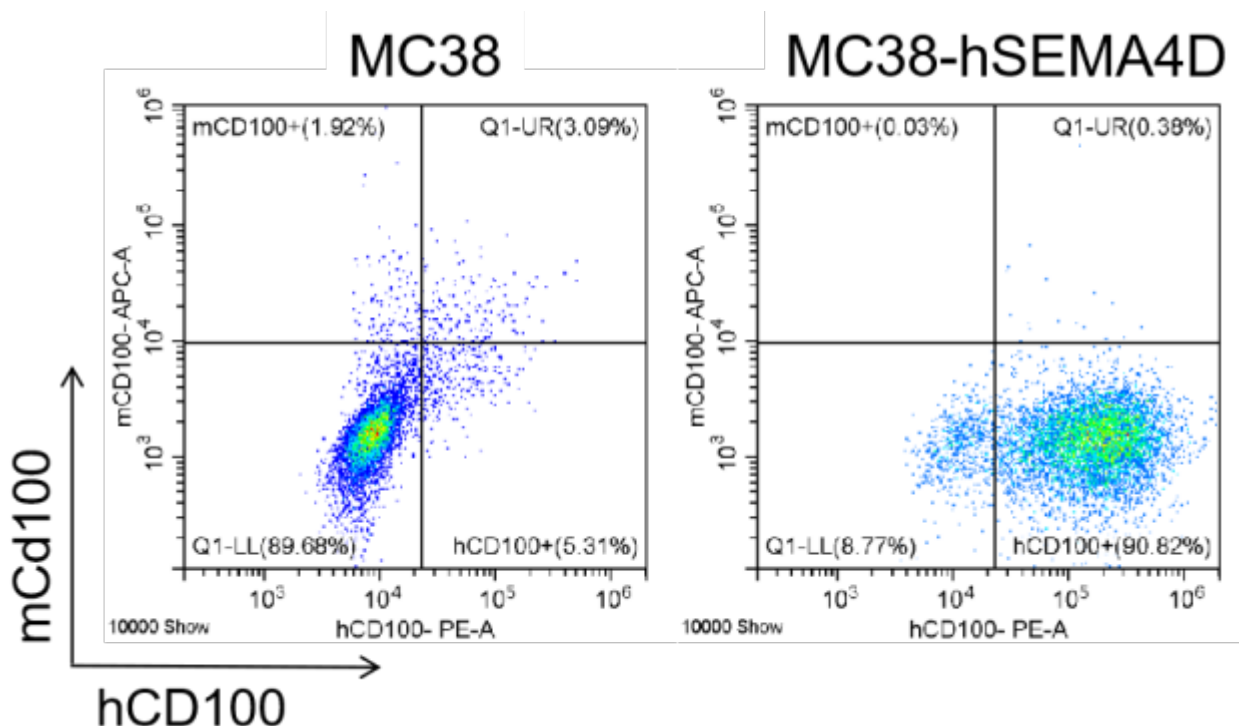


Figure 1. hSEMA4D expression in wild-type MC38 and MC38-hSEMA4D cell lines

