

# Siglec1-DTR-2A-tdTomato

<b>Nomenclature</b>	C57BL/6Smoc- <i>Siglec1</i> <sup>em1(DTR-2A-tdTomato-polyA)Smoc</sup>
<b>Cat. NO.</b>	NM-KI-215031
<b>Strain State</b>	Repository Live

## Gene Summary

<b>Gene Symbol</b> Tlr5	<b>Synonyms</b>	-
	<b>NCBI ID</b>	<a href="#">53791</a>
	<b>MGI ID</b>	<a href="#">1858171</a>
	<b>Ensembl ID</b>	<a href="#">ENSMUSG00000079164</a>
	<b>Human Ortholog</b>	TLR5

## Model Description

DTR-2A-tdTomato-polyA expression cassette was knocked into the Siglec1 gene.

\*Literature published using this strain should indicate: Siglec1-DTR-2A-tdTomato mice (Cat. NO. NM-KI-215031) were purchased from Shanghai Model Organisms Center, Inc..

## Validation Data

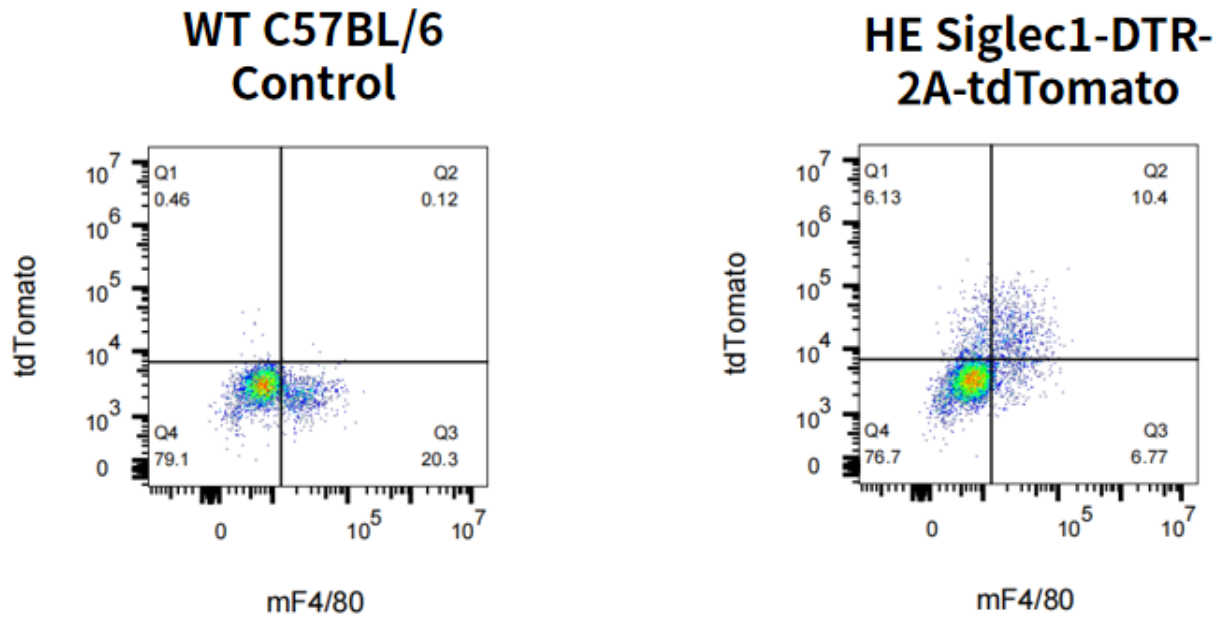


Fig1. Detection of tdTomato expression on F4/80+ macrophages in blood in Siglec1-DTR-2A-tdTomato mice.

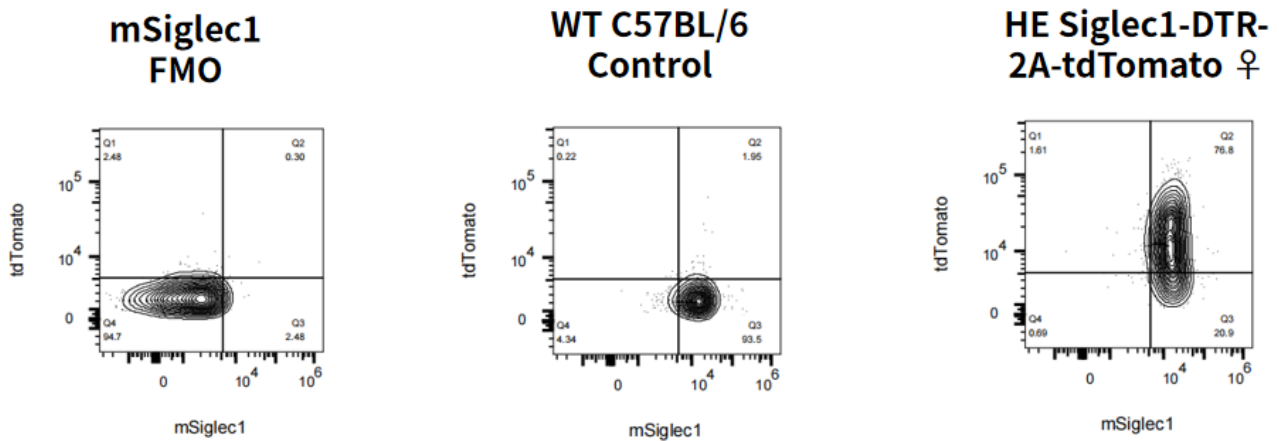


Fig2. Detection of tdTomato and Siglec1 expression on F4/80+ macrophages in Siglec1-DTR-2A-tdTomato mice.