

Siglec1-Cre

Nomenclature	C57BL/6Smoc- <i>Siglec1</i> ^{em1(iCre-polyA)Smoc}
Cat. NO.	NM-KI-215032
Strain State	Repository Live

Gene Summary

Gene Symbol Avil	Synonyms	DOC6; Advil
	NCBI ID	11567
	MGI ID	1333798
	Ensembl ID	ENSMUSG00000025432
	Human Ortholog	AVIL

Model Description

iCre-polyA expression cassette was knocked into the Siglec1 gene.

*Literature published using this strain should indicate: Siglec1-Cre mice (Cat. NO. NM-KI-215032) were purchased from Shanghai Model Organisms Center, Inc..

Validation Data

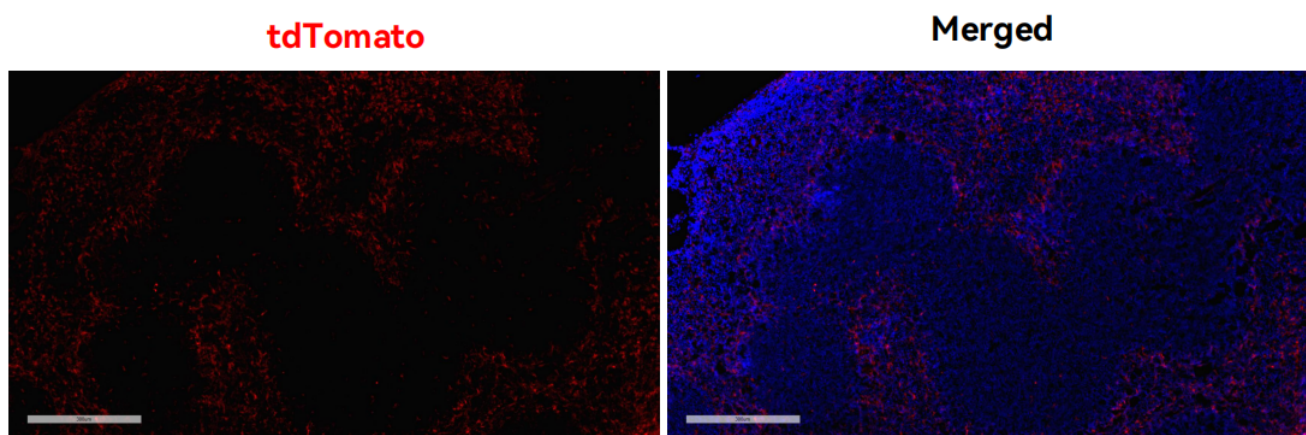


Fig1. Cre-mediated recombination in spleen of Siglec1^{Cre/+}; Rosa26^{tdTomato/+} mouse.

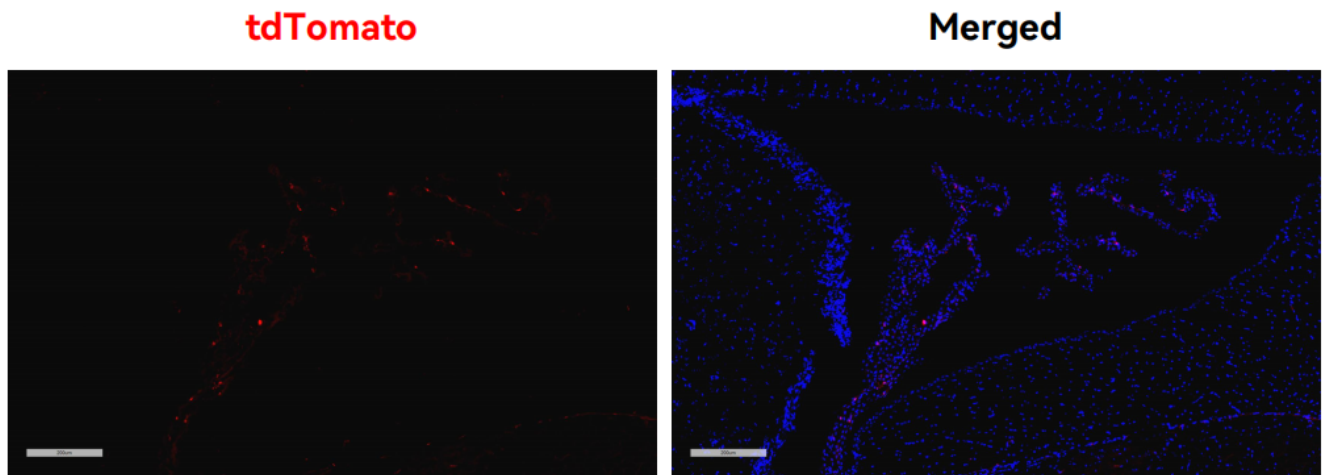


Fig2. Cre-mediated recombination in choroid plexus of *Siglec1^{Cre/+}; Rosa26^{tdTomato/+}* mouse.

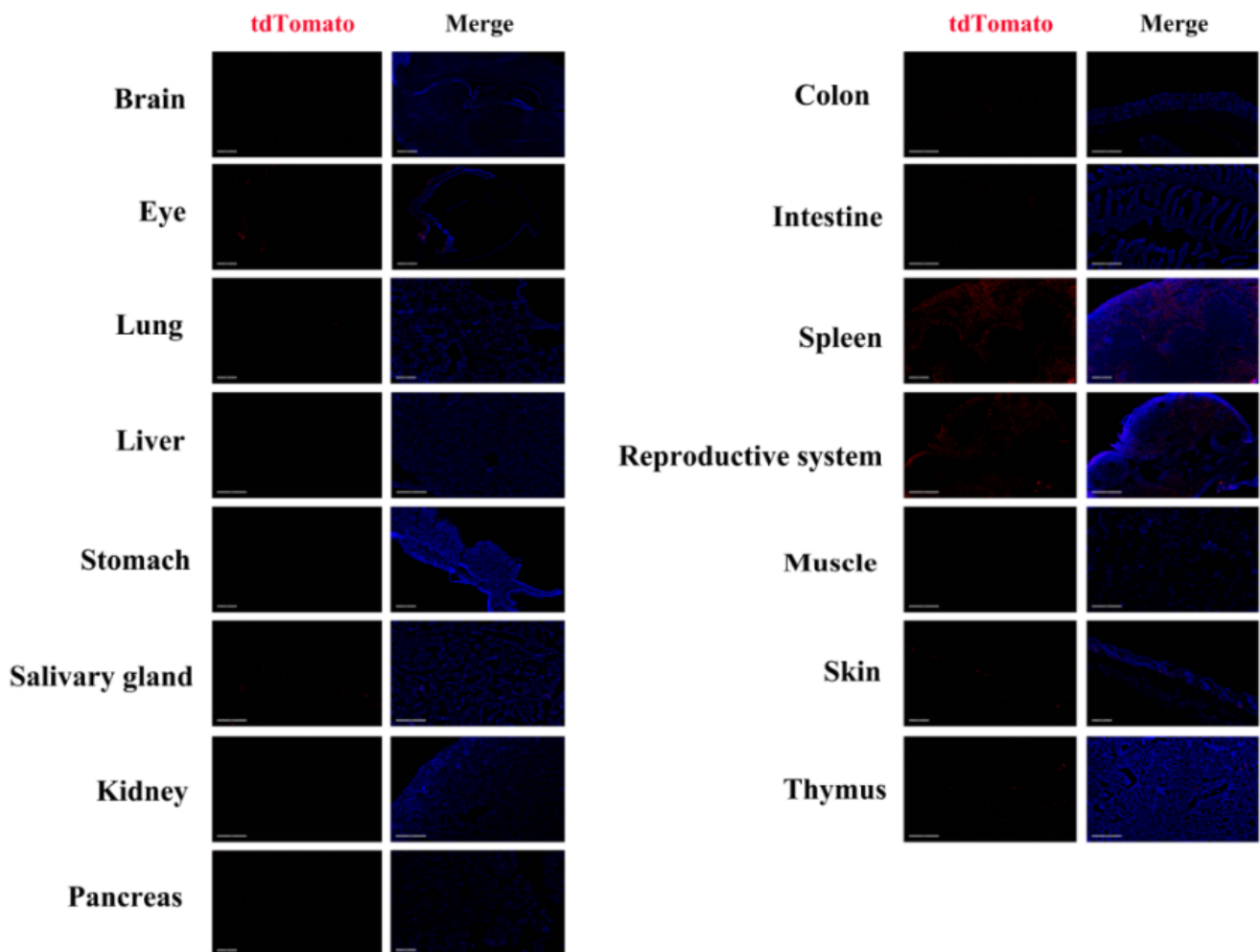


Fig3. Detection of tdTomato (red) in various tissues of *Siglec1^{Cre/+}; Rosa26^{tdTomato/+}* mice. (For more detailed information please contact our technical advisor.)