

Tagln-2A-DreERT2

Nomenclature	C57BL/6Smoc- <i>Tagln</i> ^{em1(2A-DreERT2)Smoc}
Cat. NO.	NM-KI-215038
Strain State	Sperm cryopreservation

Gene Summary

Gene Symbol Lyz2	Synonyms	Lys; Lzm; Lzp; Lysm; Lyzs; Lyzf2; Lzm-s1; AI326280
	NCBI ID	17105
	MGI ID	96897
	Ensembl ID	ENSMUSG00000069516
	Human Ortholog	LYZ2

Model Description

2A-DreERT2 expression cassette was knocked into the Tagln gene. Tagln-2A-DreERT2(2) (Stock No.NM-KI-215094) is similar to this strain.

*Literature published using this strain should indicate: Tagln-2A-DreERT2 mice (Cat. NO. NM-KI-215038) were purchased from Shanghai Model Organisms Center, Inc..

Validation Data

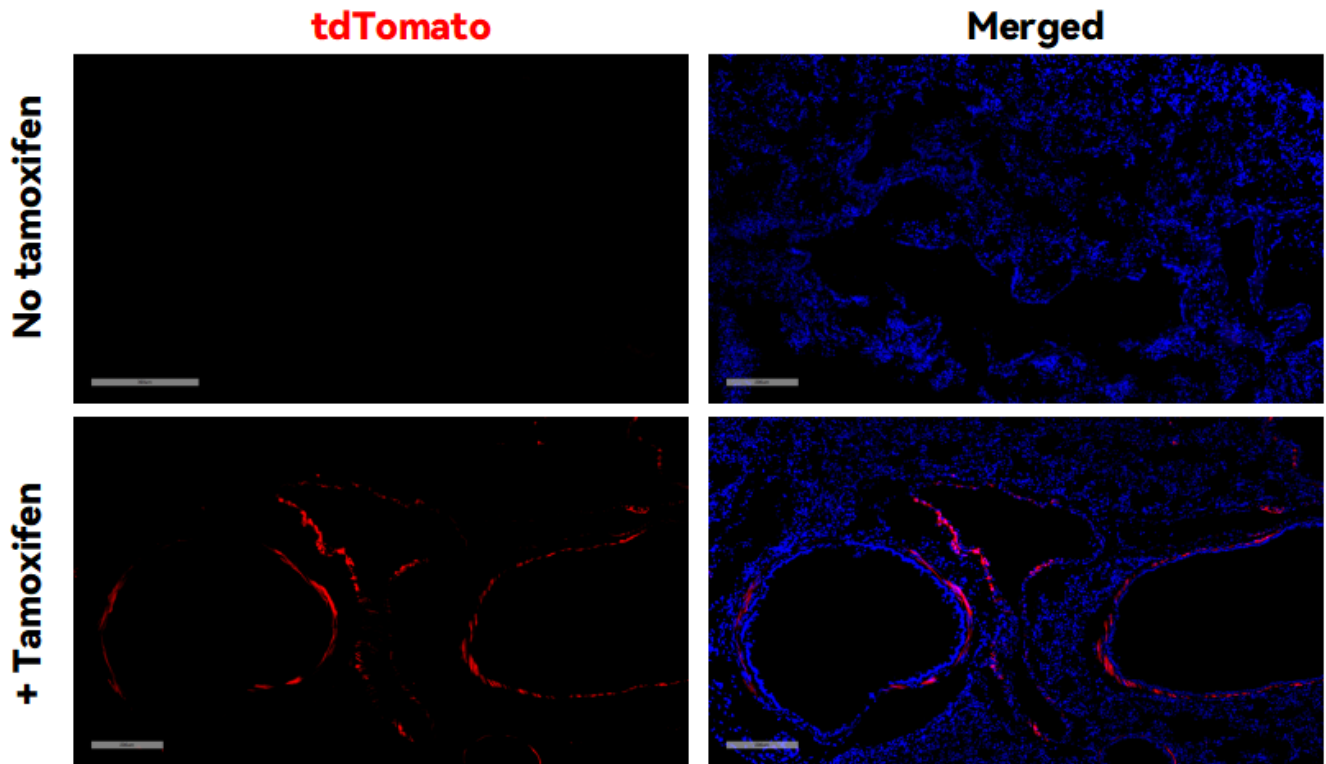


Fig1. DreERT2 mediated recombination in lung of TaglnDreERT2/+;H11tdTomato/+ mouse.

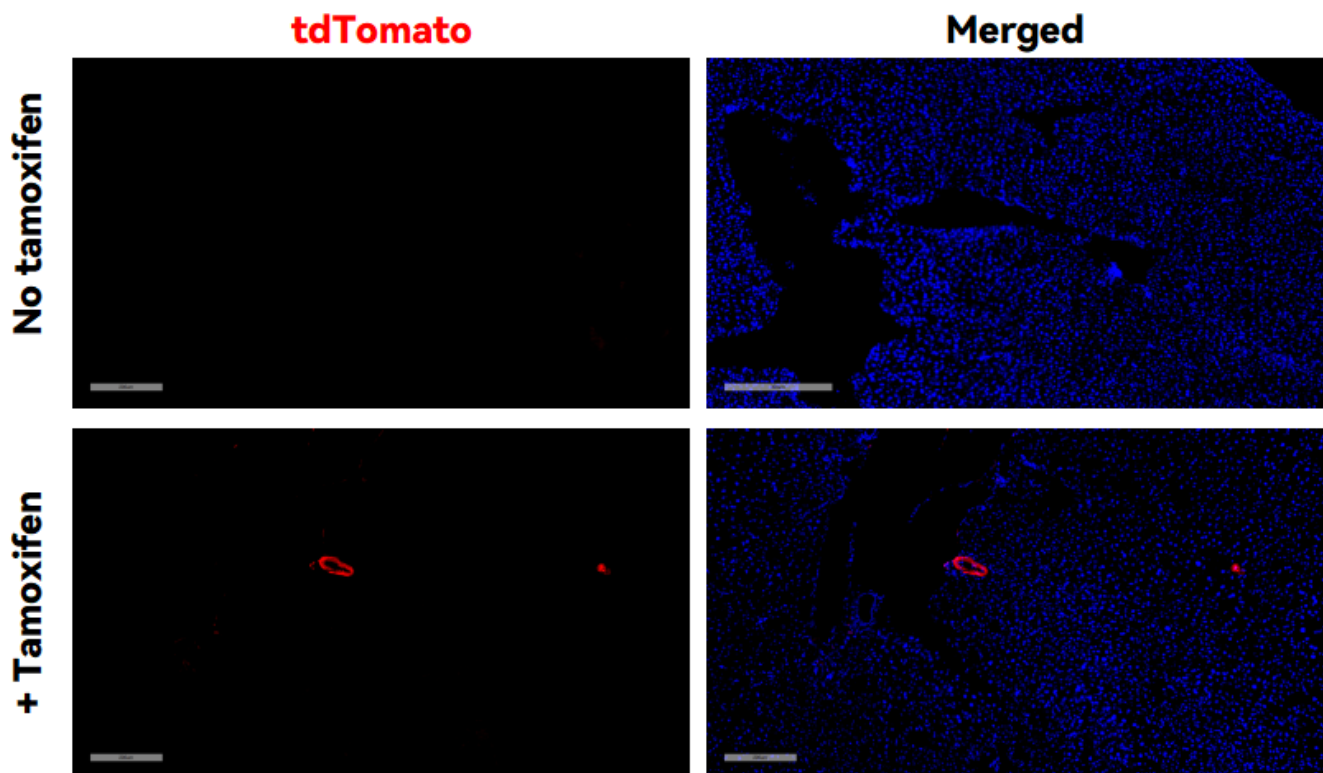


Fig2. DreERT2 mediated recombination in kindey of TaglnDreERT2/+;H11tdTomato/+ mouse.

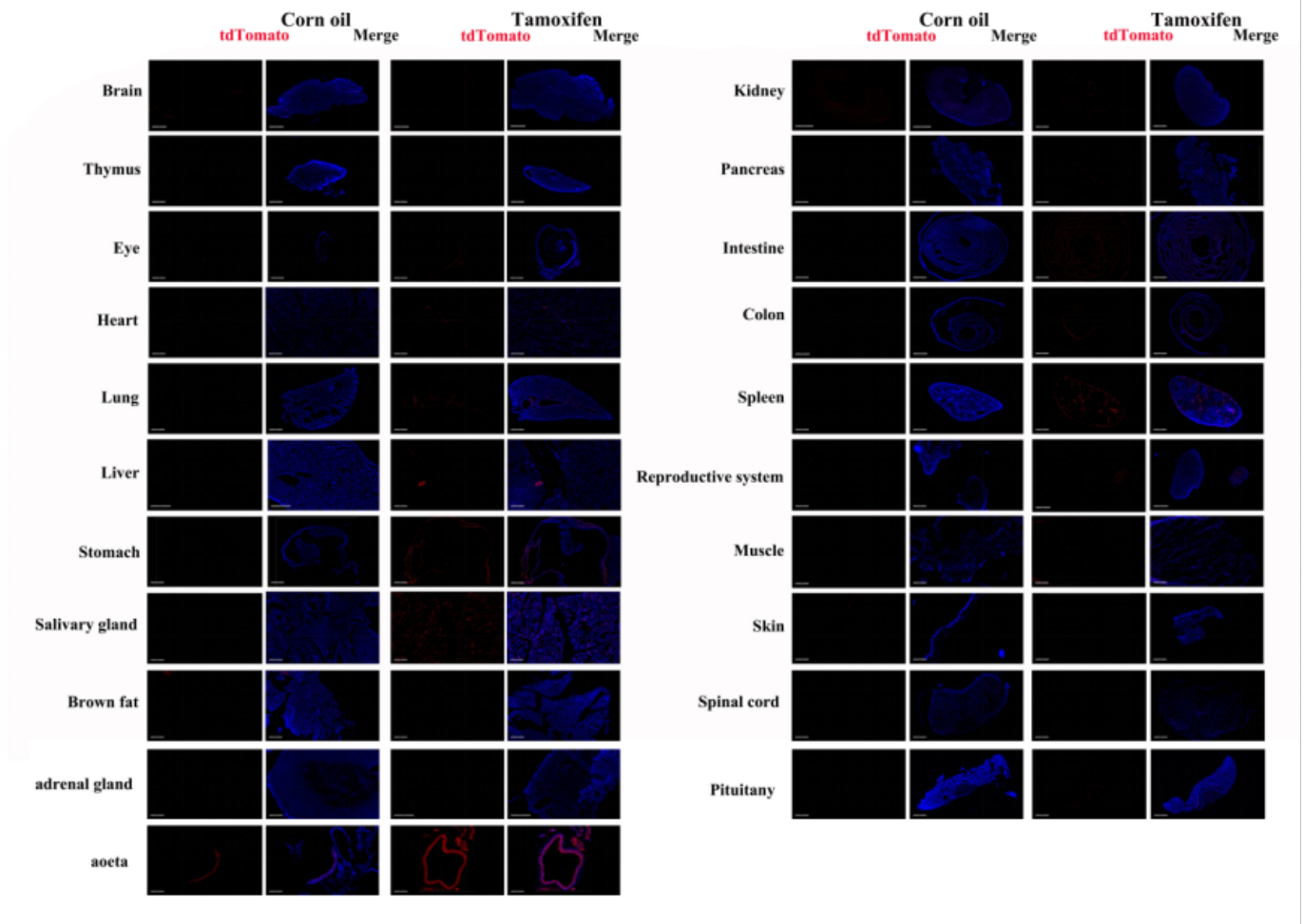


Fig3. Detection of tdTomato(red) in various tissues of TaglnDreERT2/+;H11^{td}Tomato/+ mouse. Expression tissues include: brain, pituitary gland, thymus, heart, lung, liver, stomach, salivary glands, brown fat, adrenal gland, aorta, kidney, pancreas, small and large intestine, spleen, testis and epididymis, muscle. Tissues that unexpressed include retina. (3-month old) (For more detailed information please contact our technical advisor.)