

# Tg-2A-CreERT2

<b>Nomenclature</b>	C57BL/6Smoc-Tg <sup>em1(2A-CreERT2-WPRE-polyA)Smoc</sup>
<b>Cat. NO.</b>	NM-KI-215040
<b>Strain State</b>	Sperm cryopreservation

## Gene Summary

<b>Gene Symbol</b> Col1a2	<b>Synonyms</b>	oim; Cola2; Cola-2; Col1a-2; AA960264; AI325291
	<b>NCBI ID</b>	<a href="#">12843</a>
	<b>MGI ID</b>	<a href="#">88468</a>
	<b>Ensembl ID</b>	<a href="#">ENSMUSG00000029661</a>
	<b>Human Ortholog</b>	COL1A2

## Model Description

2A-CreERT2-WPRE-polyA expression cassette was knocked into the Tg gene.

\*Literature published using this strain should indicate: Tg-2A-CreERT2 mice (Cat. NO. NM-KI-215040) were purchased from Shanghai Model Organisms Center, Inc..

## Validation Data

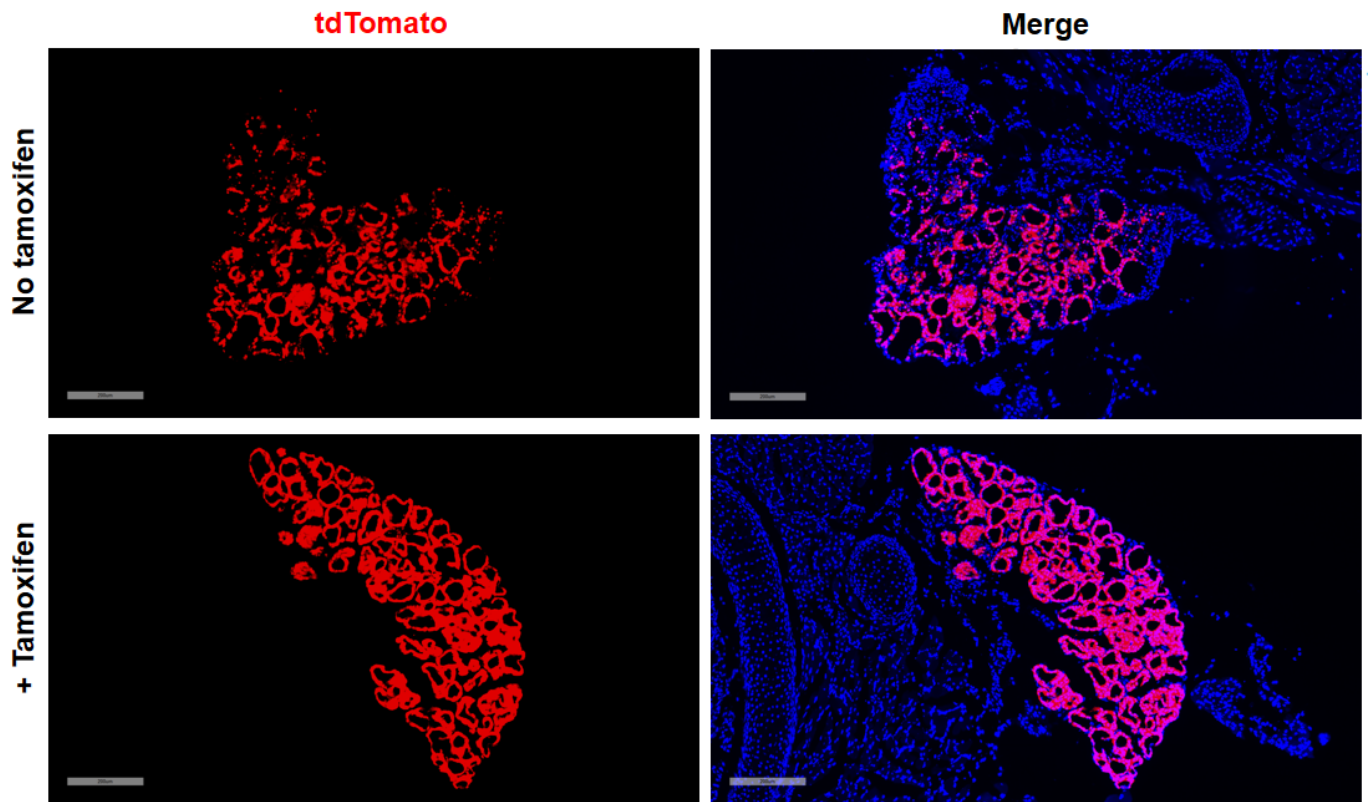


Fig1. Cre mediated recombination in thyroid of  $TgCreERT2/+;Rosa26tdTomato/+$  mouse.

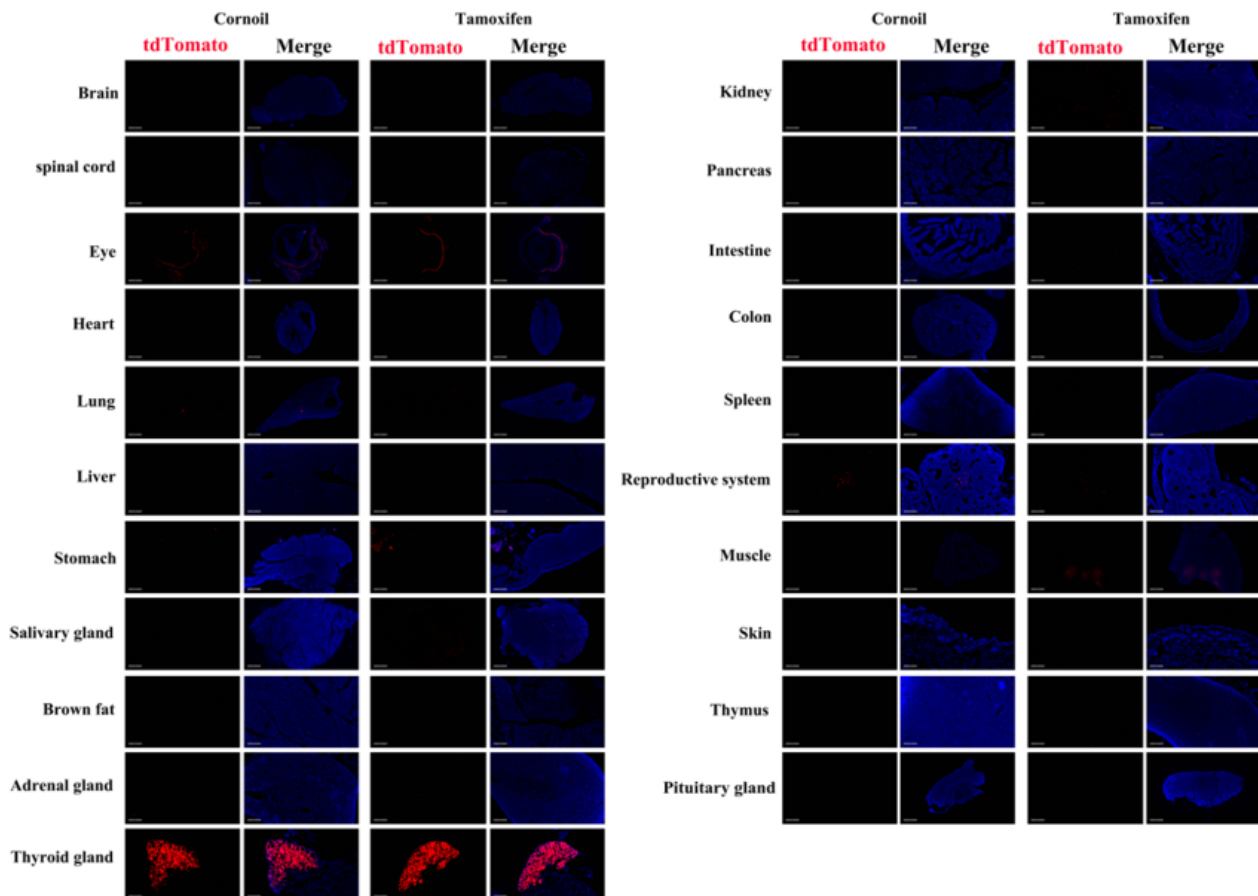


Fig2. Detection of tdTomato(red) in various tissues of TgCreERT2/+;Rosa26tdTomato/+ mouse. Expression tissues include: thyroid gland and salivary gland. A few cells expressed in lung, liver, adrenal gland, kidney, colon, small intestine, spleen, ovary, thymus and pituitary gland. Tissues that unexpressed include brain, spinal cord, retina, heart, stomach, brown fat, pancreas, muscle, epidermis. Thyroid is expressed before induction. (4-weeks old, male) (For more detailed information please contact our technical advisor.)

---