

Lgr5-2A-Dre

Nomenclature	C57BL/6Smoc- <i>Lgr5</i> ^{em1(2A-Dre)Smoc}
Cat. NO.	NM-KI-215042
Strain State	Repository Live

Gene Summary

Gene Symbol	Synonyms	FEX, Gpr49
	NCBI ID	14160
	MGI ID	1341817
	Ensembl ID	ENSMUSG00000020140

Model Description

2A-Dre expression cassette was knocked into the *Lgr5* gene.

*Literature published using this strain should indicate: *Lgr5*-2A-Dre mice (Cat. NO. NM-KI-215042) were purchased from Shanghai Model Organisms Center, Inc..

Validation Data

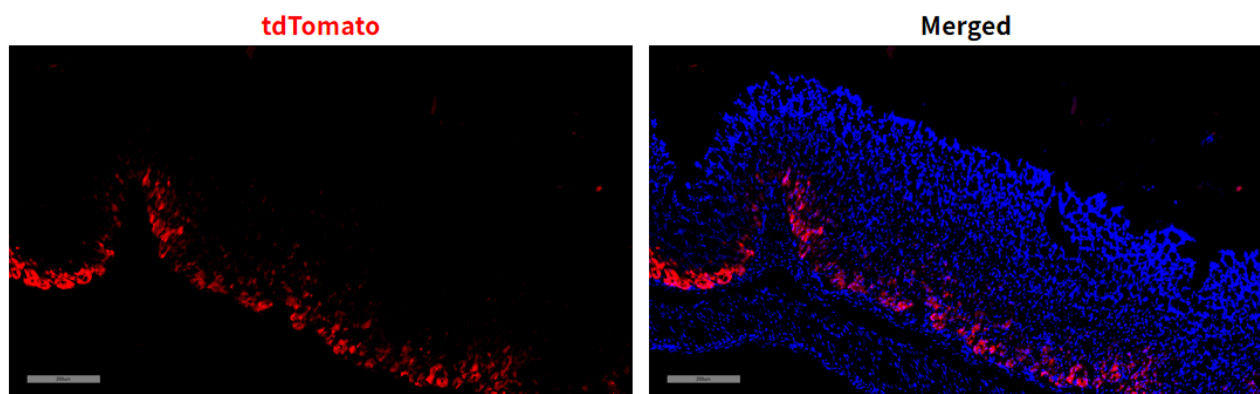


Fig 1. Dre-mediated recombination in stomach of *Lgr5*^{Dre/+}; *Rosa26*^{tdTomato/+} mice.

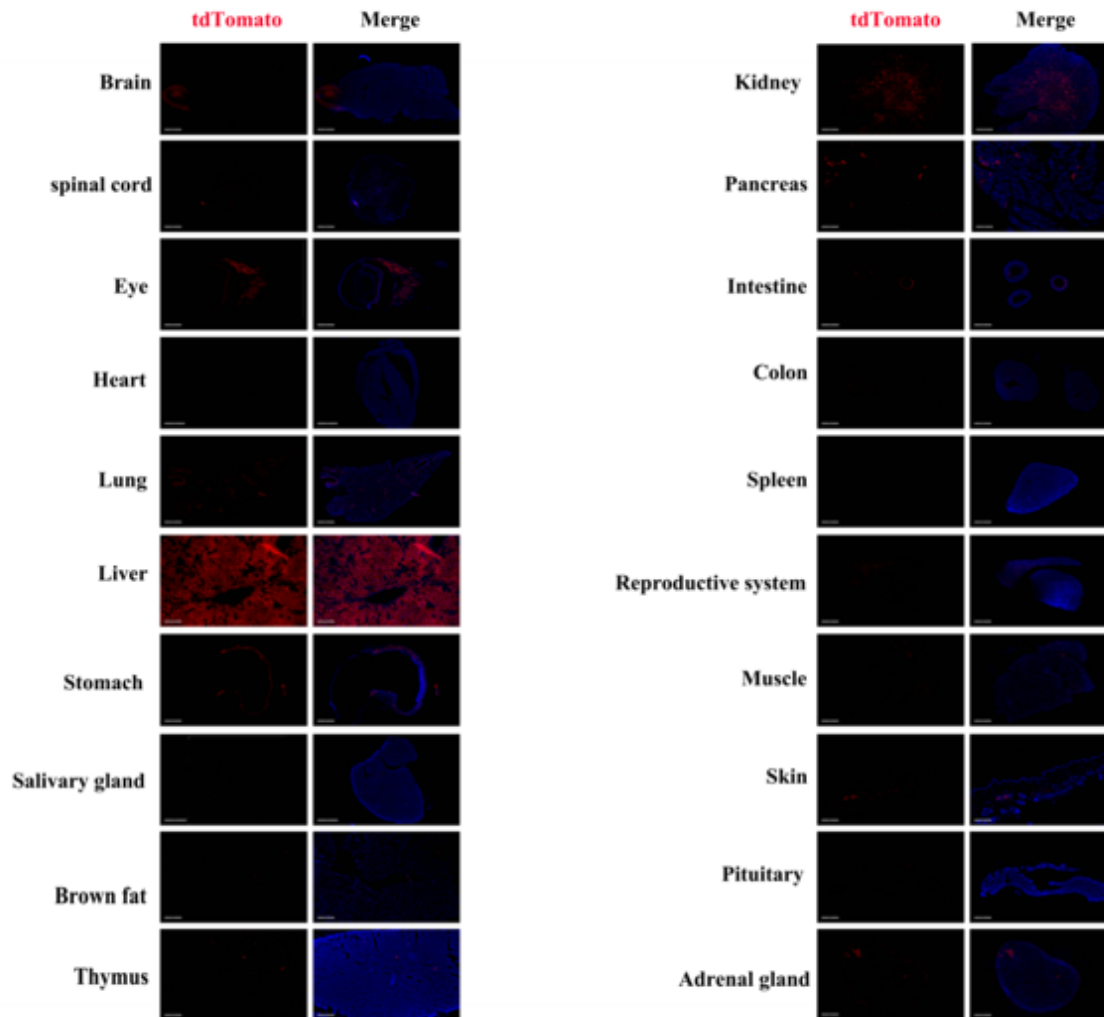


Fig 2. Detection of tdTomato (red) in various tissues of *Lgr5Dre/+; Rosa26tdTomato/+* mice. Expression tissues include: olfactory bulb, spinal cord, retina, lung, liver, stomach, kidney, small intestine, large intestine, epididymis, skin, pituitary gland. A few cells expressed in salivary gland, brown fat, thymus, pancreas, testis, muscle, adrenal gland. Tissues that unexpressed include heart. (8.5-week old, male) (For more detailed information please contact our technical advisor.)