

# Col1a2-2A-Cre

<b>Nomenclature</b>	C57BL/6Smoc- <i>Col1a2</i> <sup>em1(2A-Cre)Smoc</sup>
<b>Cat. NO.</b>	NM-KI-215043
<b>Strain State</b>	Repository Live

## Gene Summary

<b>Gene Symbol</b> Col1a2	<b>Synonyms</b>	oim; Cola2; Cola-2; Col1a-2; AA960264; AI325291
	<b>NCBI ID</b>	<a href="#">12843</a>
	<b>MGI ID</b>	<a href="#">88468</a>
	<b>Ensembl ID</b>	<a href="#">ENSMUSG00000029661</a>
	<b>Human Ortholog</b>	COL1A2

## Model Description

2A-Cre expression cassette was knocked into the Col1a2 gene.

\*Literature published using this strain should indicate: Col1a2-2A-Cre mice (Cat. NO. NM-KI-215043) were purchased from Shanghai Model Organisms Center, Inc..

## Validation Data

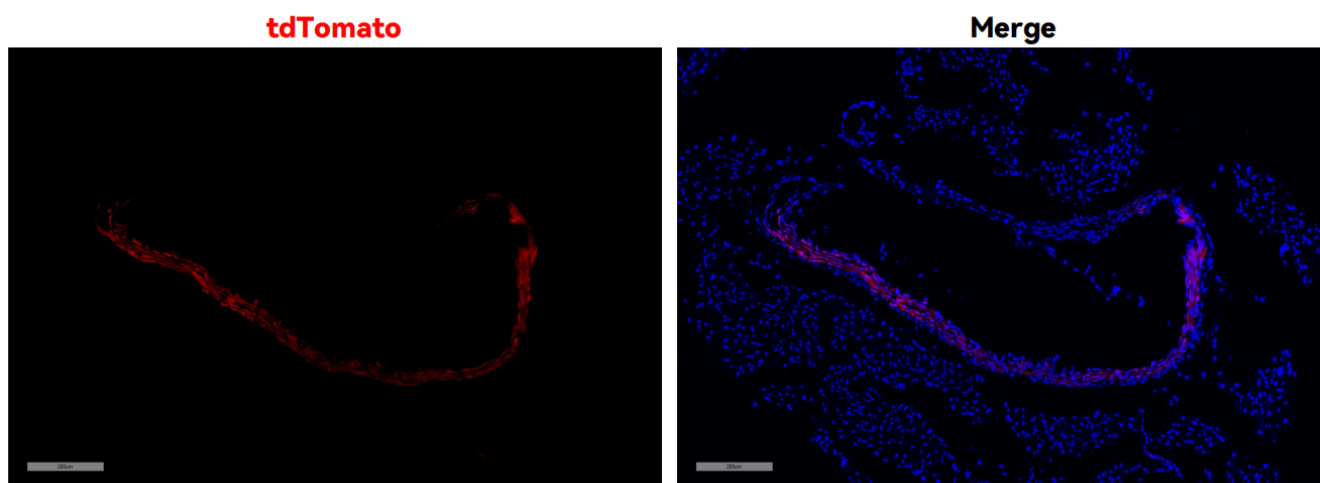


Fig1. Cre-mediated recombination in Blood vessels of Col1a2<sup>Cre/+</sup>;Rosa26<sup>tdTomato/+</sup> mouse.

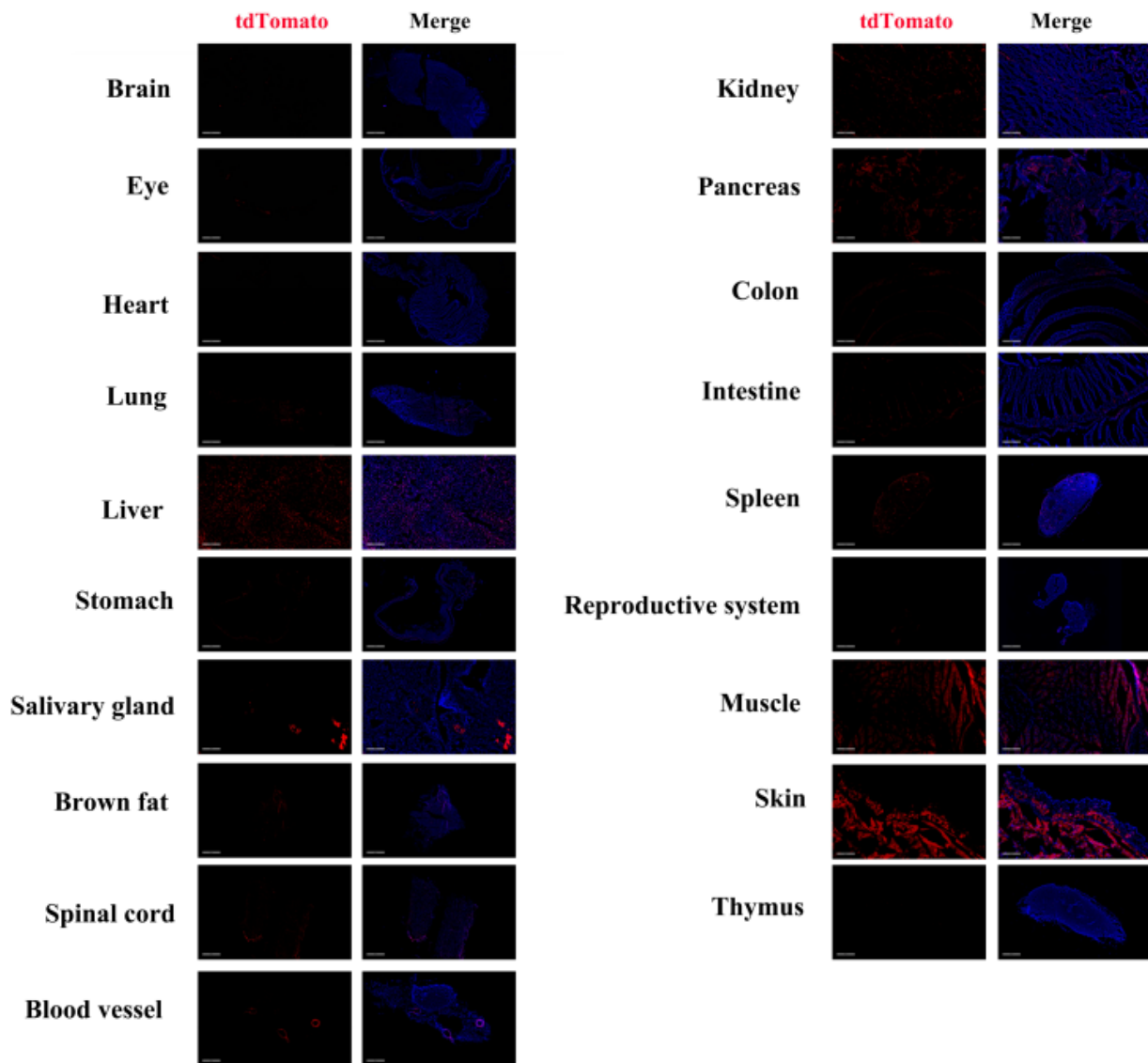


Fig2. Detection of tdTomato(red) in various tissues of Col1a2Cre/+; Rosa26tdTomato/+ mice. (For more detailed information please contact our technical advisor.)