

# hIL2RA/hIL2RB/hIL2RG

<b>Nomenclature</b>	C57BL/6Smoc- <i>Il2ra</i> <sup>tm1(hIL2RA)</sup> <i>Il2rg</i> <sup>em1(IL2RG)</sup> <i>Il2rb</i> <sup>tm1(hIL2RB)Smoc</sup>
<b>Cat. NO.</b>	NM-HU-210414
<b>Strain State</b>	Embryo cryopreservation

## Gene Summary

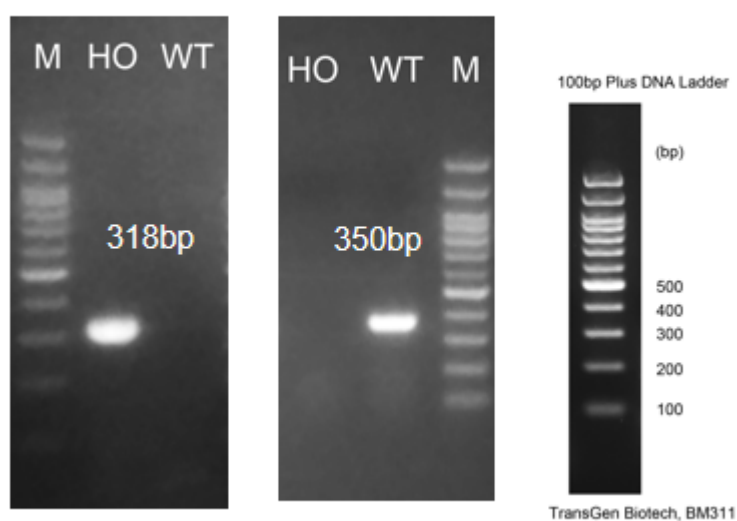
<b>Gene Symbol</b> IL2RA	<b>Synonyms</b>	CD25; IL2r; IL-2R alpha chain; Ly-43
	<b>NCBI ID</b>	<a href="#">16184</a>
	<b>MGI ID</b>	<a href="#">96549</a>
	<b>Ensembl ID</b>	<a href="#">ENSMUSG00000026770</a>
	<b>Human Ortholog</b>	IL2RA
<b>Gene Symbol</b> IL2RB	<b>Synonyms</b>	p70; CD122; IL15Rbeta; IL-2Rbeta; IL-15Rbeta; IL-2/15Rbeta
	<b>NCBI ID</b>	<a href="#">16185</a>
	<b>MGI ID</b>	<a href="#">96550</a>
	<b>Ensembl ID</b>	<a href="#">ENSMUSG00000068227</a>
	<b>Human Ortholog</b>	IL2RB
<b>Gene Symbol</b> IL2RG	<b>Synonyms</b>	gc; p64; [g]c; CD132; gamma(c)
	<b>NCBI ID</b>	<a href="#">16186</a>
	<b>MGI ID</b>	<a href="#">96551</a>
	<b>Ensembl ID</b>	<a href="#">ENSMUSG00000031304</a>
	<b>Human Ortholog</b>	IL2RG
<b>Gene Symbol</b> Il2ra	<b>Synonyms</b>	CD25; IL2r; IL-2R alpha chain; Ly-43
	<b>NCBI ID</b>	<a href="#">16184</a>
	<b>MGI ID</b>	<a href="#">96549</a>
	<b>Ensembl ID</b>	<a href="#">ENSMUSG00000026770</a>
	<b>Human Ortholog</b>	IL2RA

## Model Description

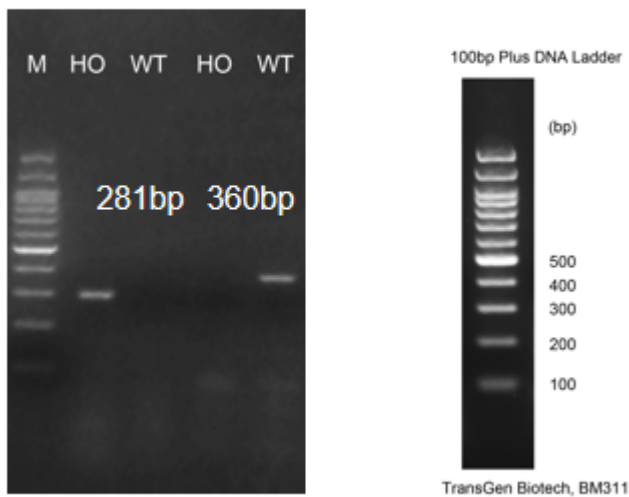
hIL2RA(NM-HU-190064) was crossed with hIL2RG/hILRB(NM-HU-210354) to generate hIL2RA/hIL2RB/hIL2RG mice.

\*Literature published using this strain should indicate: hIL2RA/hIL2RB/hIL2RG mice (Cat. NO. NM-HU-210414) were purchased from Shanghai Model Organisms Center, Inc..

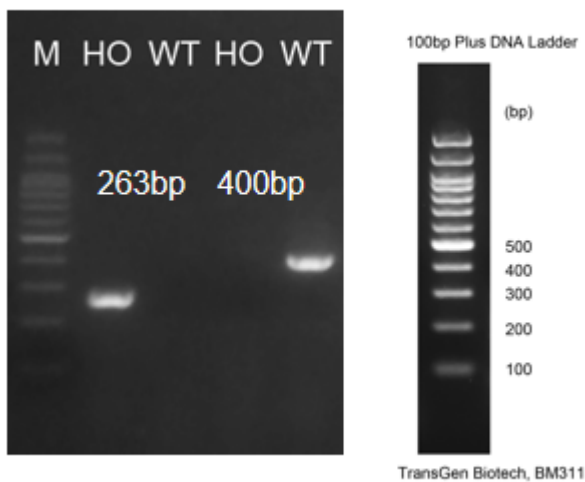
## Validation Data



**Fig1. Detection of IL2RA expression in thymus and spleen by RT-PCR.** Wild type: only one band at 350 bp with primers F1/R1(mIl2ra);Homozygous: only one band at 318 bp with primers F2/R2(hIL2RA); Abbr.. M, DNA marker; HO, homozygous; HE, heterozygous; WT, wild type.



**Fig2. Detection of IL2RB expression in thymus and spleen by RT-PCR.** Wild type: only one band at 360 bp with primers F1/R1(mIl2rb);Homozygous: only one band at 281 bp with primers F2/R2(hIL2RB); Abbr.. M, DNA marker; HO, homozygous; HE, heterozygous; WT, wild type.



**Fig3. Detection of IL2RG expression in thymus and spleen by RT-PCR.** Wild type: only one band at 400 bp with primers F1/R1(mIl2rg);Homozygous: only one band at 263 bp with primers F2/R2(hIL2RG); Abbr.. M, DNA marker; HO, homozygous; HE, heterozygous; WT, wild type.