

Nps-2A-Cre

Nomenclature	C57BL/6Smoc- <i>Nps</i> ^{em(2A-iCre)Smoc}
Cat. NO.	NM-KI-215090
Strain State	Sperm cryopreservation

Gene Summary

Gene Symbol Nps	Synonyms	-
	NCBI ID	100043254
	MGI ID	3642232
	Ensembl ID	ENSMUSG00000073804
	Human Ortholog	NPS

Model Description

2A-iCre expression cassette was knocked into the *Nps* gene .

*Literature published using this strain should indicate: *Nps*-2A-Cre mice (Cat. NO. NM-KI-215090) were purchased from Shanghai Model Organisms Center, Inc..

Validation Data

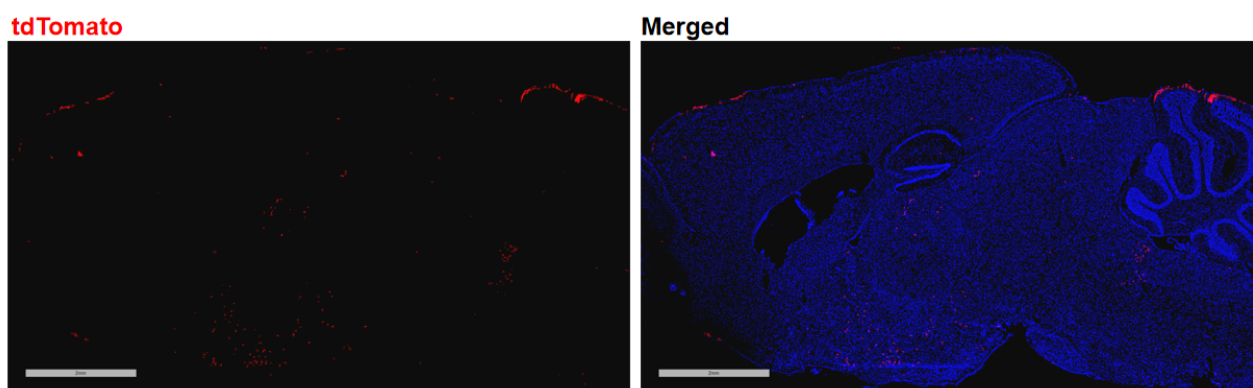


Fig1. Cre mediated recombination in brain of *Nps*^{cre/+}; *Rosa26*^{tdTomato/+} mouse.

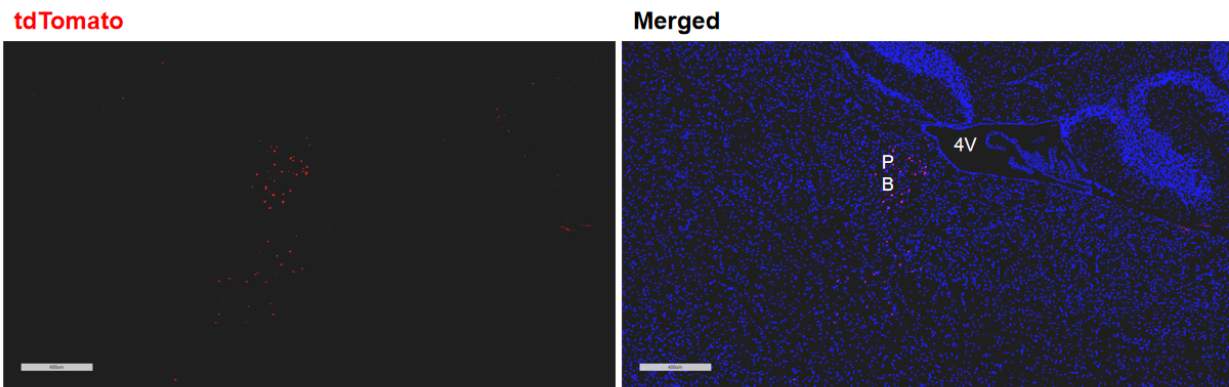


Fig2. Cre mediated recombination in PB region of *Npscre/+;Rosa26tdTomato/+* mouse.

PB:parabrachial nucleus;4V:Fourth ventricle

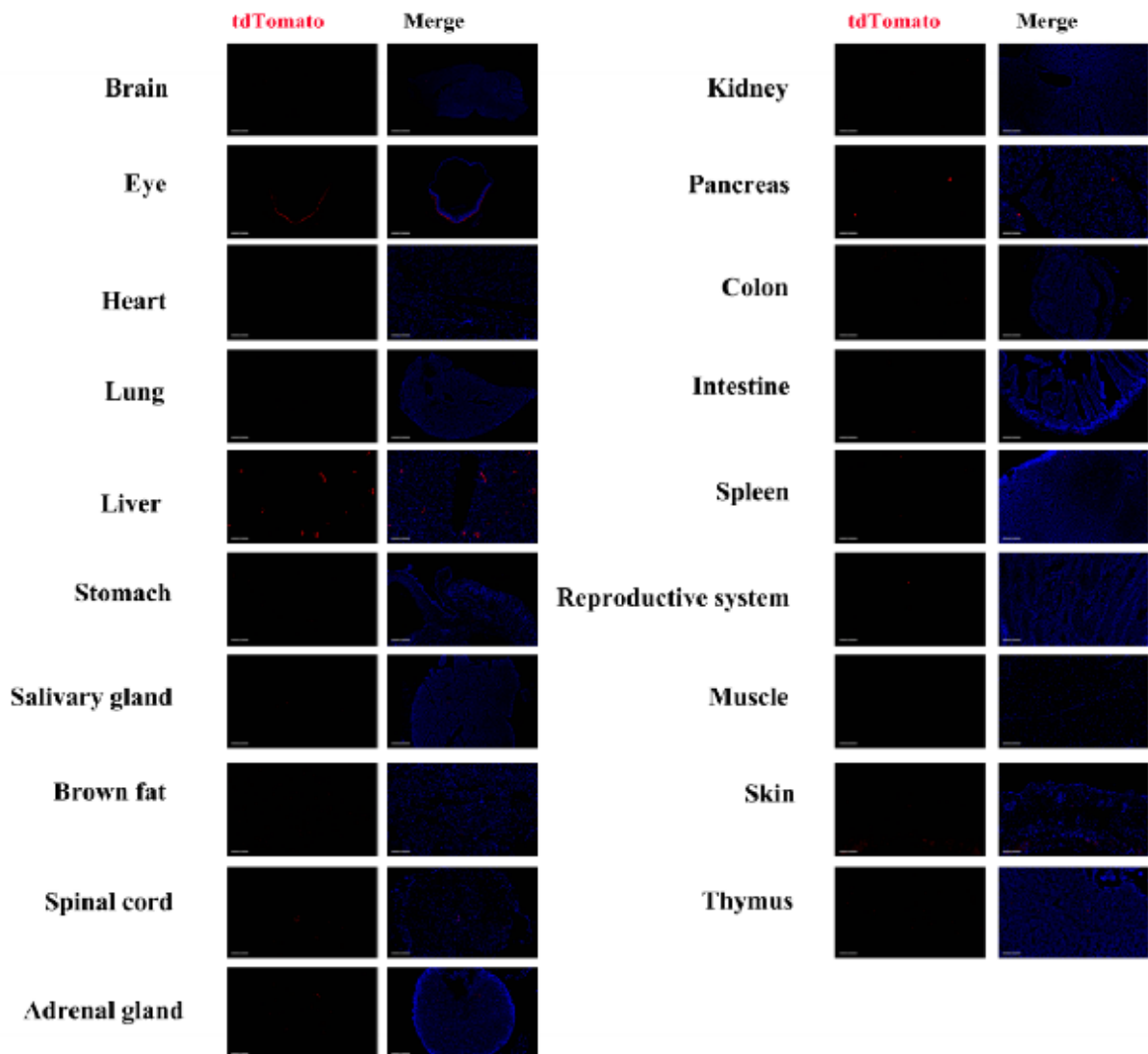


Fig3. Detection of tdTomato(red) in various tissues of *Npscre/+;Rosa26tdTomato/+* mouse. Expression tissues include: brain. A few cells expressed in liver, brown fat, stomach, salivary gland, spinal cord, adrenal gland, kidney, pancreas, colon and

small intestine, spleen, testis, skin, thymus. Tissues that unexpressed include retina, heart, lung, muscle. (8.5-week old, male) (For more detailed information please contact our technical advisor.)
