

Lum-2A-CreERT2

| | |
|---------------------|--|
| Nomenclature | C57BL/6Smoc- <i>Lum</i> ^{em1(2A-CreERT2)Smoc} |
| Cat. NO. | NM-KI-210447 |
| Strain State | Repository Live |

Gene Summary

| | | |
|---------------------------|-----------------------|------------------------------------|
| Gene Symbol Lum | Synonyms | Ldc; SLRR2D |
| | NCBI ID | 17022 |
| | MGI ID | 109347 |
| | Ensembl ID | ENSMUSG00000036446 |
| | Human Ortholog | LUM |

Model Description

2A-CreERT2 expression cassette was knocked into the Lum gene stop codon site.

*Literature published using this strain should indicate: Lum-2A-CreERT2 mice (Cat. NO. NM-KI-210447) were purchased from Shanghai Model Organisms Center, Inc..

Validation Data

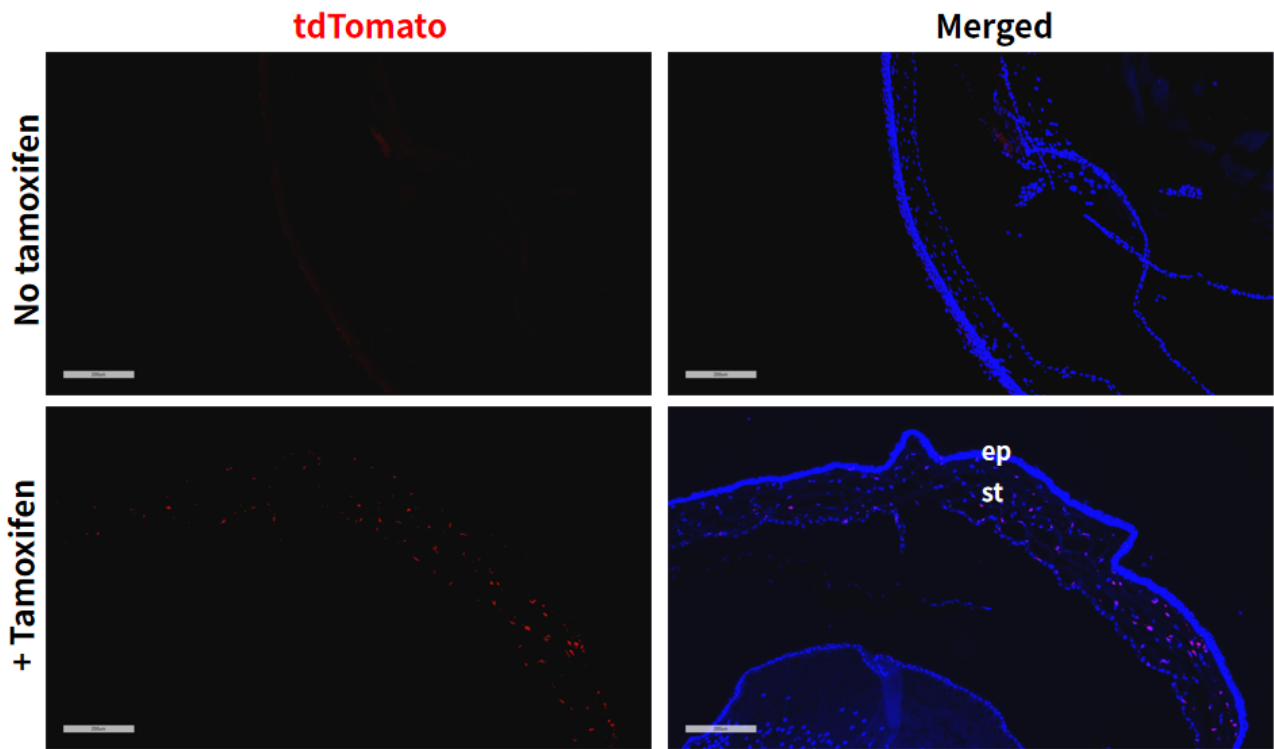


Fig1. Cre mediated recombination in Cornea of LumCreERT2/+;Rosa26tdTomato/+ mouse. (ep, epithelium; st, stroma.)

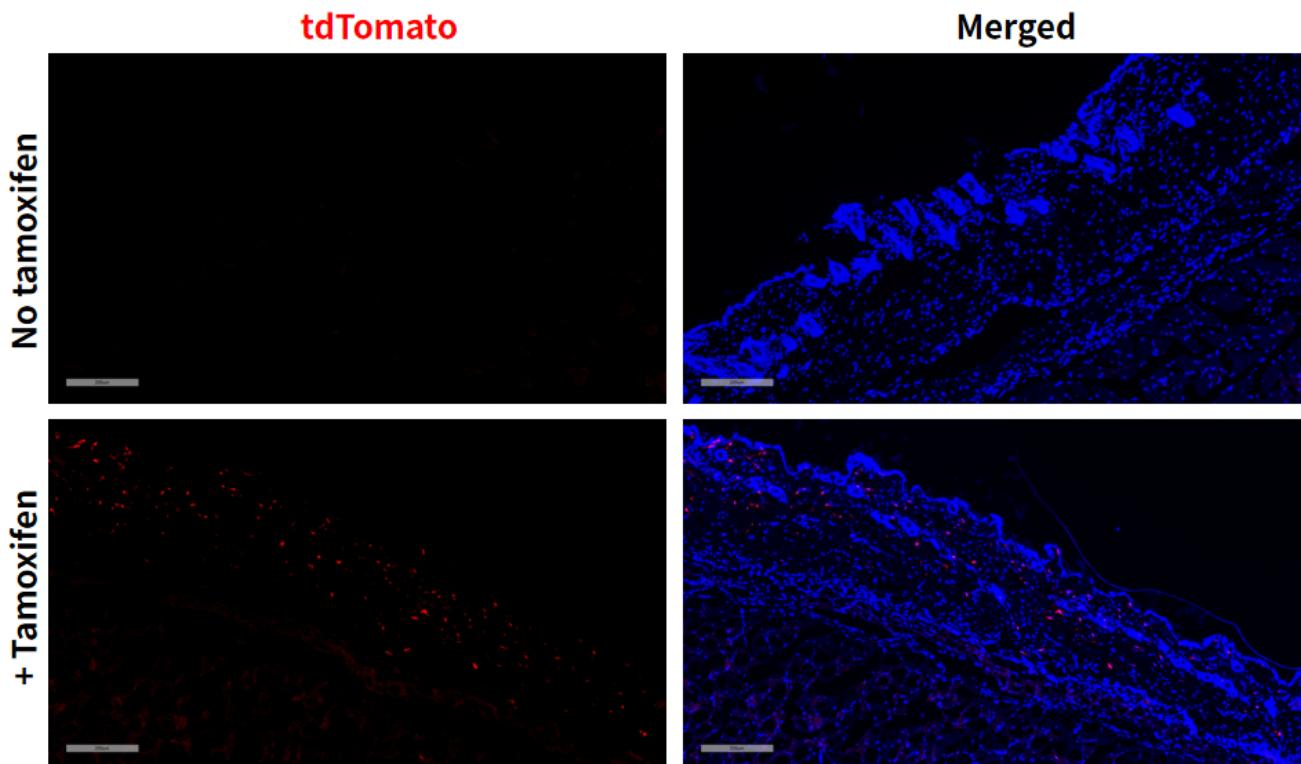


Fig2. Cre mediated recombination in skin of LumCreERT2/+;Rosa26tdTomato/+ mouse.

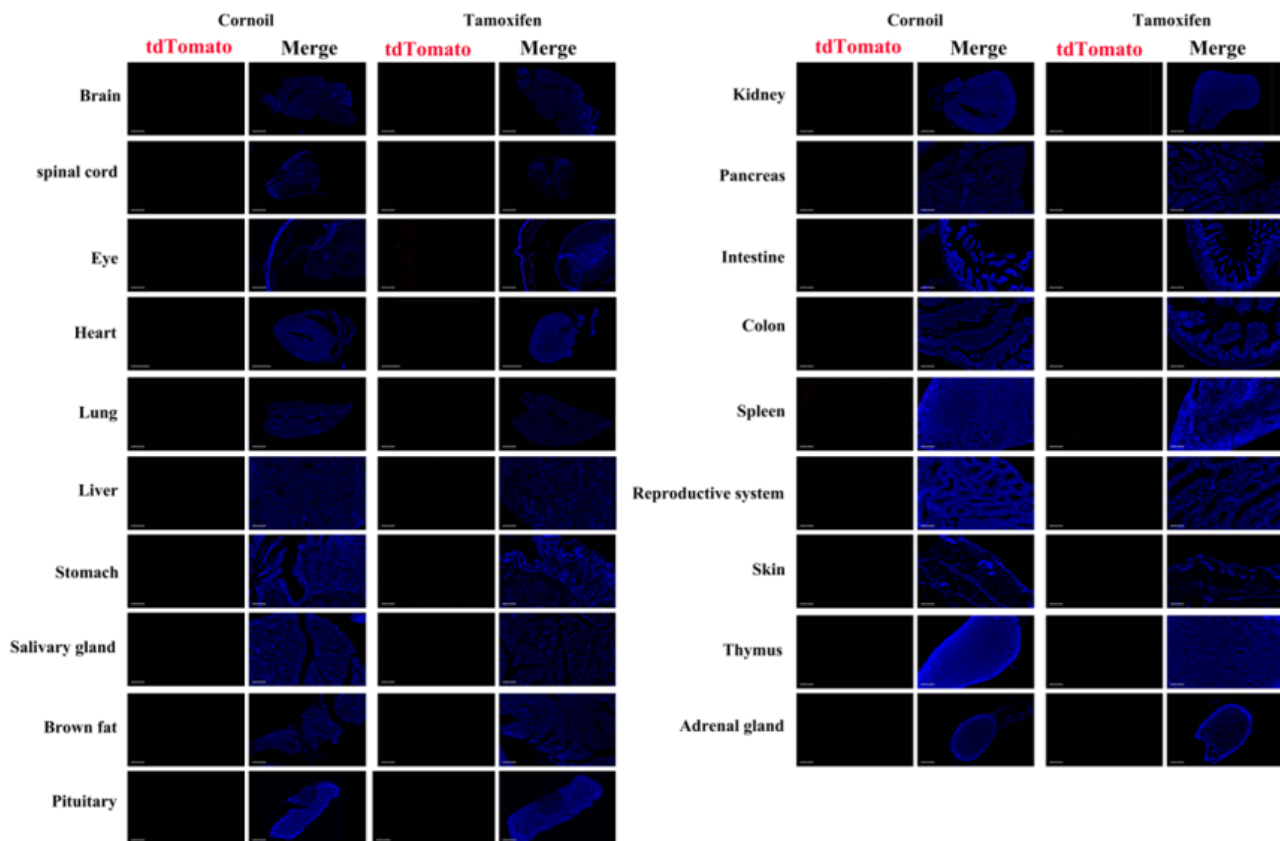


Fig3. Detection of tdTomato(red) in various tissues of LumCreERT2/+;Rosa26tdTomato/+ mouse. Expression tissues include: cornea, skin, stomach, small intestine, colon, spleen and adrenal gland. A few cells expressed in spinal cord, salivary gland, thymus. Tissues that unexpressed include brain, heart, lung, liver, brown fat, pituitary, kidney, pancreas and testis. (9-week old, male) (For more detailed information please contact our technical advisor.)