

# hCSF1/hCSF1R(BALB/c)

<b>Nomenclature</b>	BALB/cAnSmoc- <i>Csf1</i> <sup>tm2(CSF1)</sup> <i>Csf1r</i> <sup>em3(hCSF1R)/Smoc</sup>
<b>Cat. NO.</b>	NM-HU-220016
<b>Strain State</b>	Repository Live

## Gene Summary

<b>Gene Symbol</b> CSF1	<b>Synonyms</b>	colony-stimulating factor-1; CSF-1; Csfm; M-CSF
	<b>NCBI ID</b>	<a href="#">12977</a>
	<b>MGI ID</b>	<a href="#">1339753</a>
	<b>Ensembl ID</b>	<a href="#">ENSMUSG00000014599</a>
	<b>Human Ortholog</b>	CSF1
<b>Gene Symbol</b> CSF1R	<b>Synonyms</b>	Fms; Fim2; CD115; Csfmr; Fim-2; CSF-1R; M-CSFR; M-CSF-R; AI323359
	<b>NCBI ID</b>	<a href="#">12978</a>
	<b>MGI ID</b>	<a href="#">1339758</a>
	<b>Ensembl ID</b>	<a href="#">ENSMUSG00000024621</a>
	<b>Human Ortholog</b>	CSF1R

## Model Description

The endogenous mouse *Csf1* and *Csf1r* genes was replaced respectively by human CSF1 and CSF1R genes.

\*Literature published using this strain should indicate: hCSF1/hCSF1R(BALB/c) mice (Cat. NO. NM-HU-220016) were purchased from Shanghai Model Organisms Center, Inc..

## Validation Data

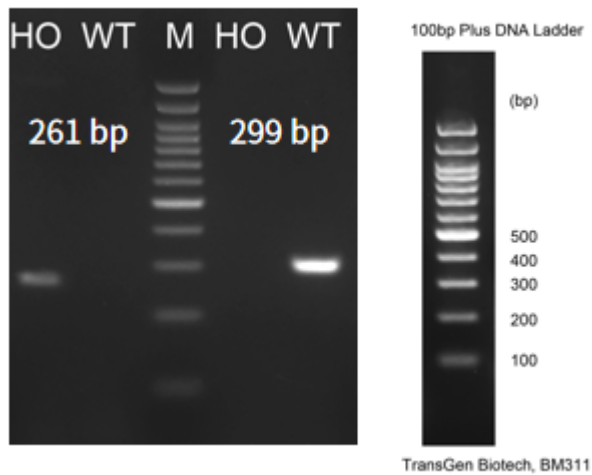


Fig.1 Detection of CSF1 expression in spleen and lung by RT-PCR.

Wild type: only one band at 299 bp with primers F1/R1(mCsf1);

Homozygous: only one band at 261 bp with primers F2/R2(hCSF1);

Abbr. M, DNA marker; HO, homozygous; WT, wild type.

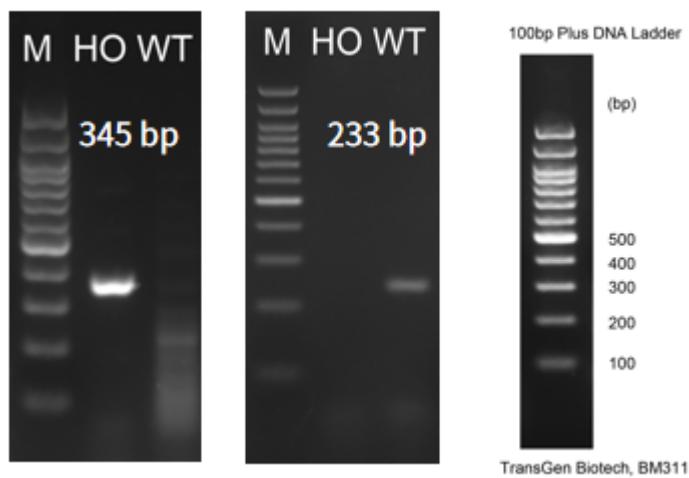


Fig.2 Detection of CSF1R expression in spleen and lung by RT-PCR.

Wild type: only one band at 233 bp with primers F1/R1(mCsf1r);

Homozygous: only one band at 345 bp with primers F2/R2(hCSF1R);

Abbr. M, DNA marker; HO, homozygous; WT, wild type.

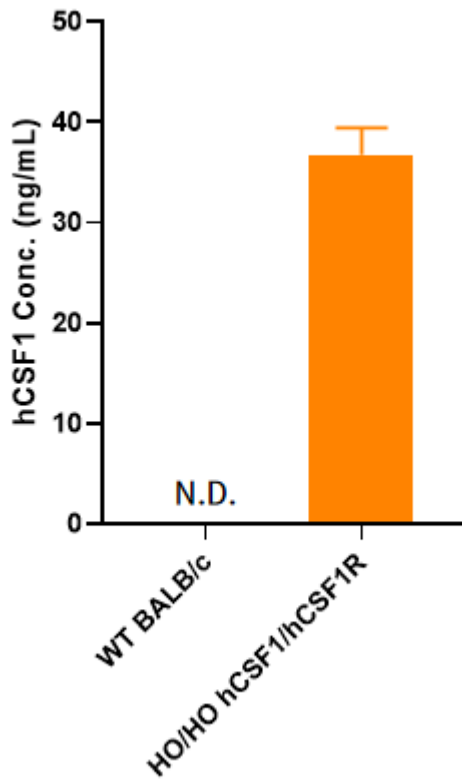


Fig.3 Detection of hCSF1 expression in serum by ELISA (n=3).

Abbr. HO, homozygous; WT, wild type.

Note. hCSF1/hCSF1R and BALB/c mice were i.p. injected with LPS for 6h.

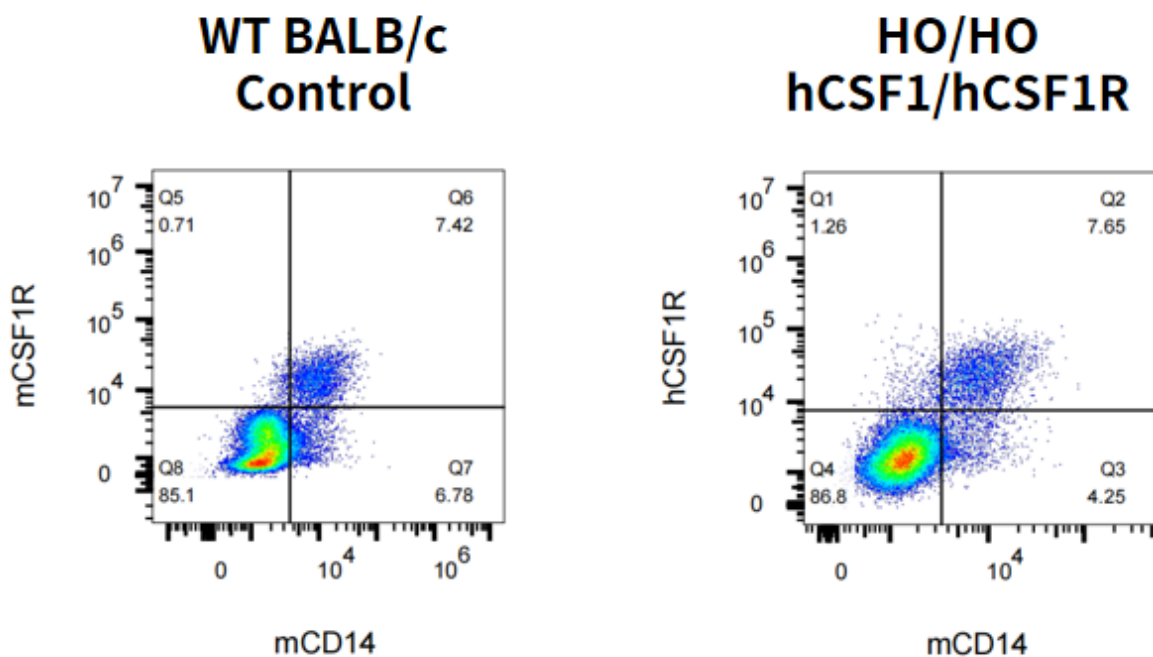


Fig.4 Expression characterization of hCSF1R on Monocytes/ macrophages in Bone marrow in hCSF1/hCSF1R dKI mice.

