

hPD-L1(BALB/c)

Nomenclature	BALB/cAnSmoc- <i>Cd274</i> ^{em(hPD-L1)Smoc}
Cat. NO.	NM-HU-220028
Strain State	Embryo cryopreservation

Gene Summary

Gene Symbol Cd274	Synonyms	B7h1; Pdl1; Pdcd1l1; Pdcd1lg1; A530045L16Rik
	NCBI ID	60533
	MGI ID	1926446
	Ensembl ID	ENSMUSG00000016496
	Human Ortholog	CD274

Model Description

The endogenous mouse Cd274 gene was replaced by human PD-L1 gene.

*Literature published using this strain should indicate: hPD-L1(BALB/c) mice (Cat. NO. NM-HU-220028) were purchased from Shanghai Model Organisms Center, Inc..

Validation Data

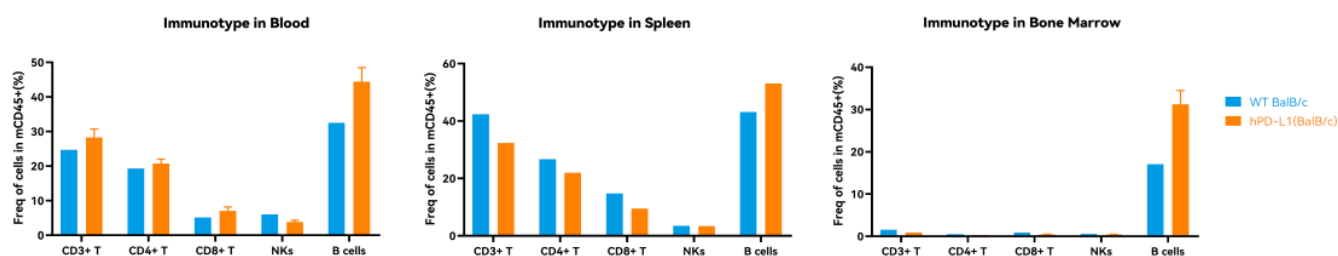


Fig1. Immunotype in hPD-L1 mice.

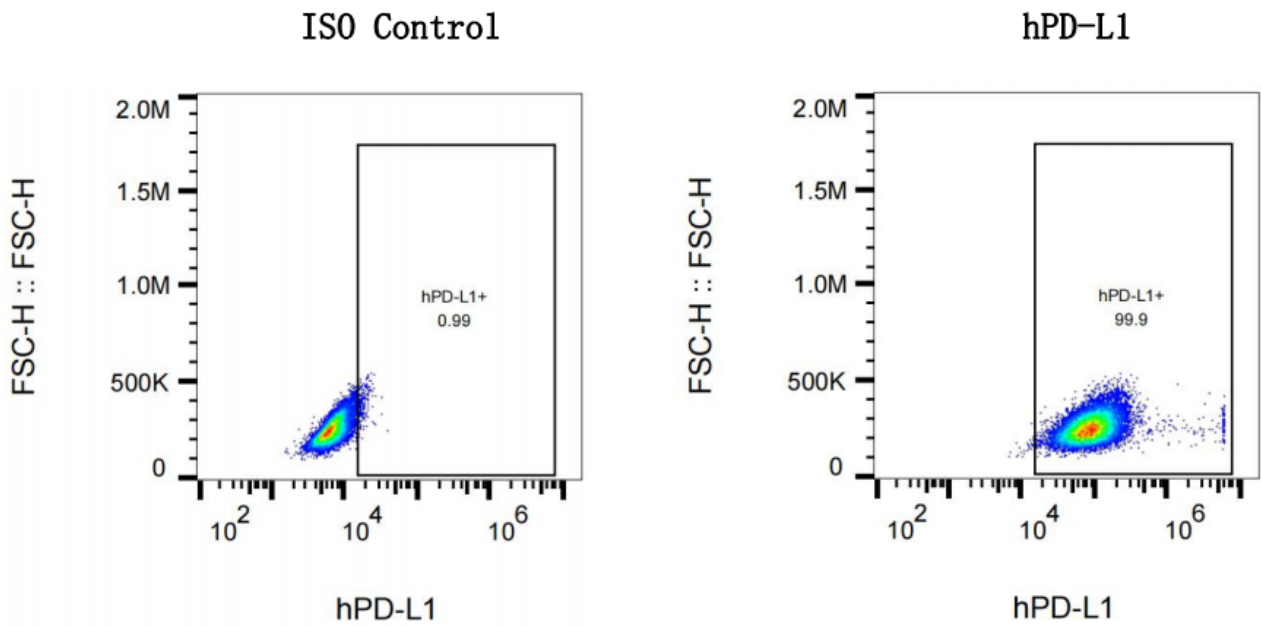


Fig2. Detection of hPD-L1 expression on U-937 cells.

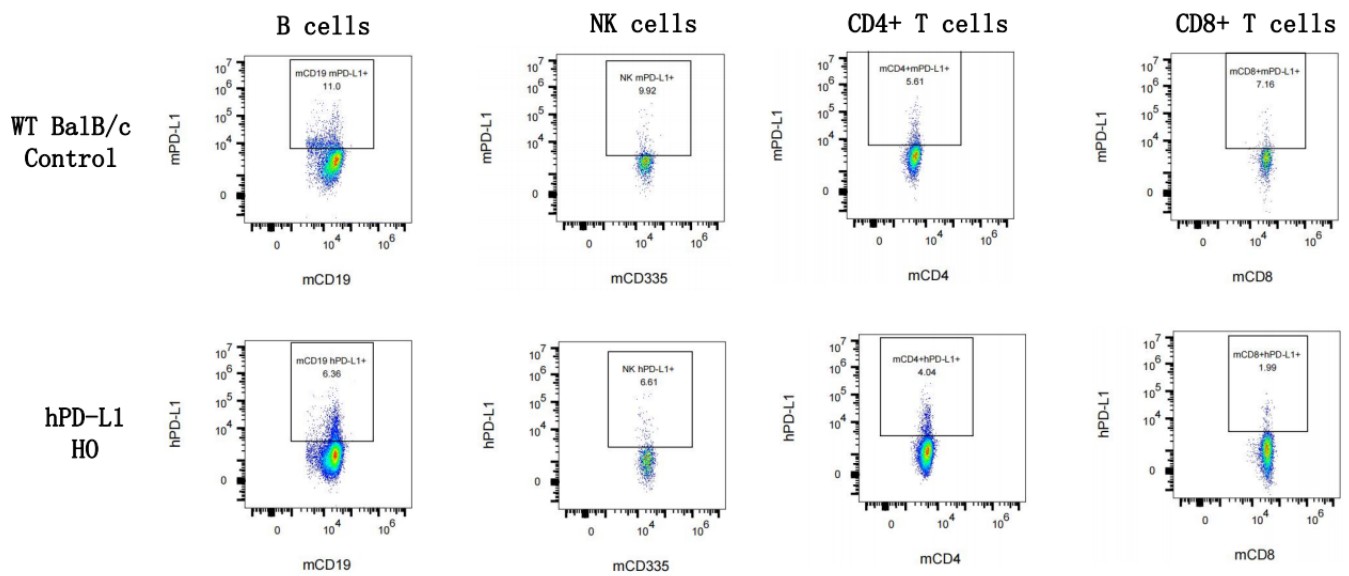


Fig3. Detection of hPD-L1 expression on T cells, B cells and NKs in Blood in hPD-L1 KI mice.

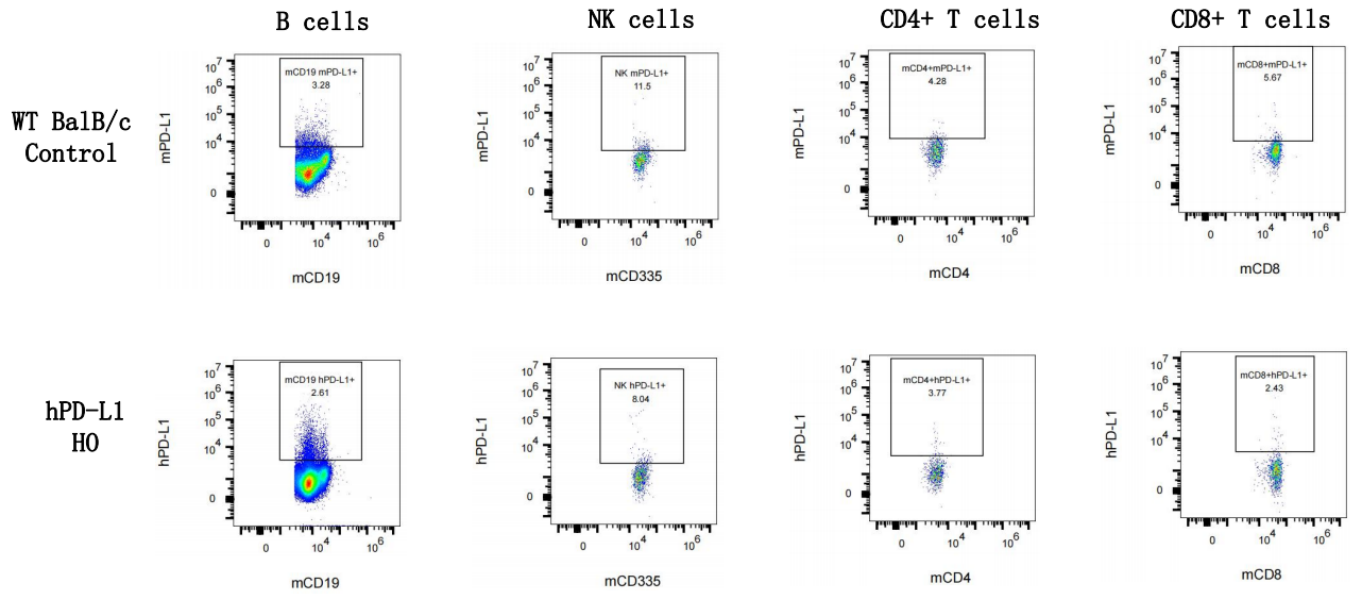


Fig4. Detection of hPD-L1 expression on T cells, B cells and NKs in Bone Marrow in hPD-L1 KI mice.

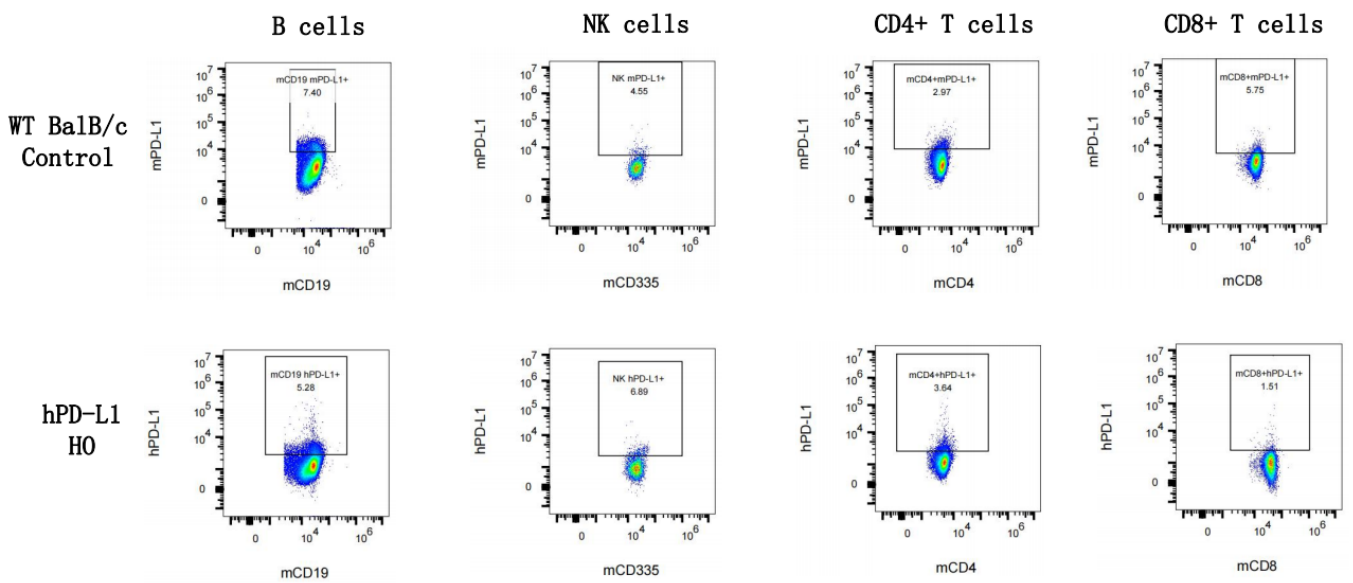


Fig5. Detection of hPD-L1 expression on T cells, B cells and NKs in Spleen in hPD-L1 KI mice.