

# Tagln-CreERT2

<b>Nomenclature</b>	C57BL/6Smoc- <i>Tagln</i> <sup>em(CreERT2)1Smoc</sup>
<b>Cat. NO.</b>	NM-KI-225006
<b>Strain State</b>	Repository Live

## Gene Summary

<b>Gene Symbol</b>	<b>Synonyms</b>	Sm22, Sm22a, Ws310
	<b>NCBI ID</b>	<a href="#">21345</a>
	<b>MGI ID</b>	<a href="#">106012</a>
	<b>Ensembl ID</b>	<a href="#">ENSMUSG00000032085</a>
	<b>Human Ortholog</b>	TAGLN

## Model Description

CreERT2 expression cassette was knocked into the Tagln gene .

\*Literature published using this strain should indicate: Tagln-CreERT2 mice (Cat. NO. NM-KI-225006) were purchased from Shanghai Model Organisms Center, Inc..

## Validation Data

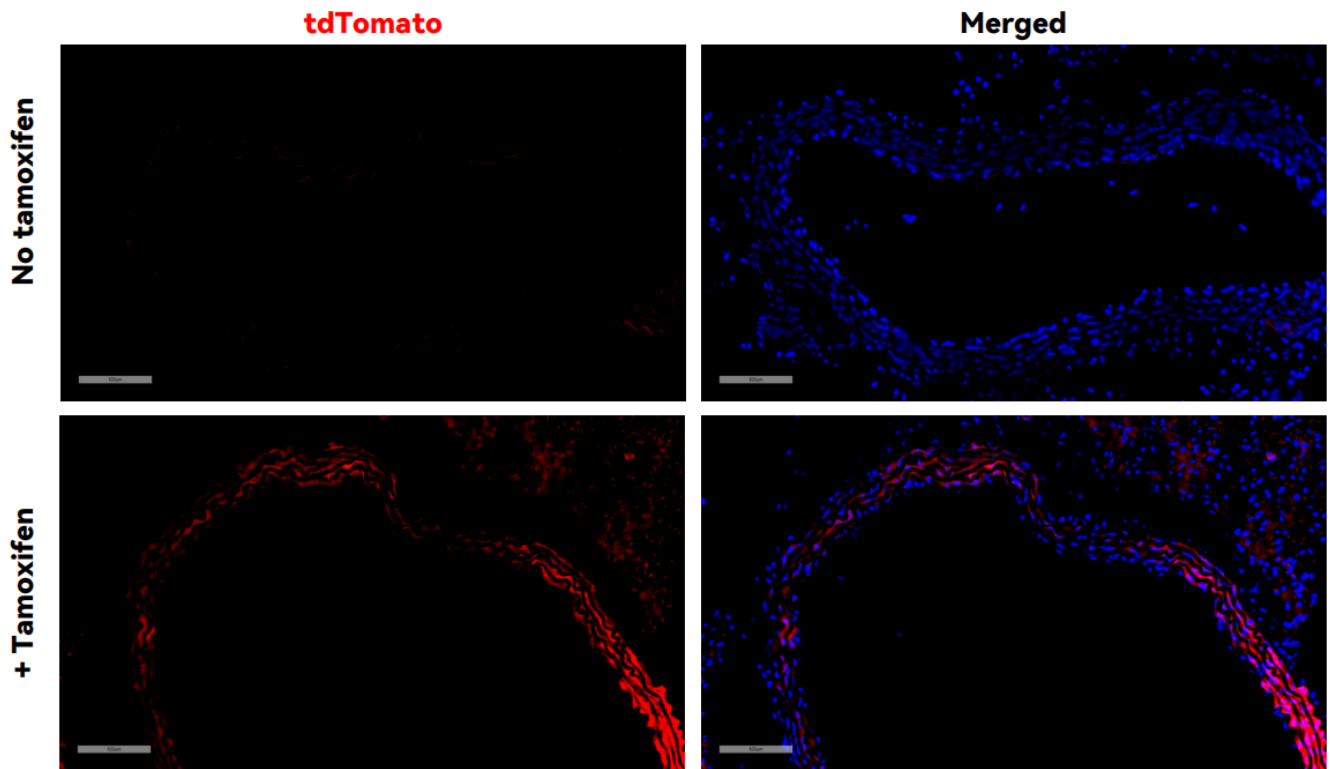


Fig1. CreERT2-mediated recombination in aorta of TaglnCreERT2/+;Rosa26tdTomato/+ mouse.

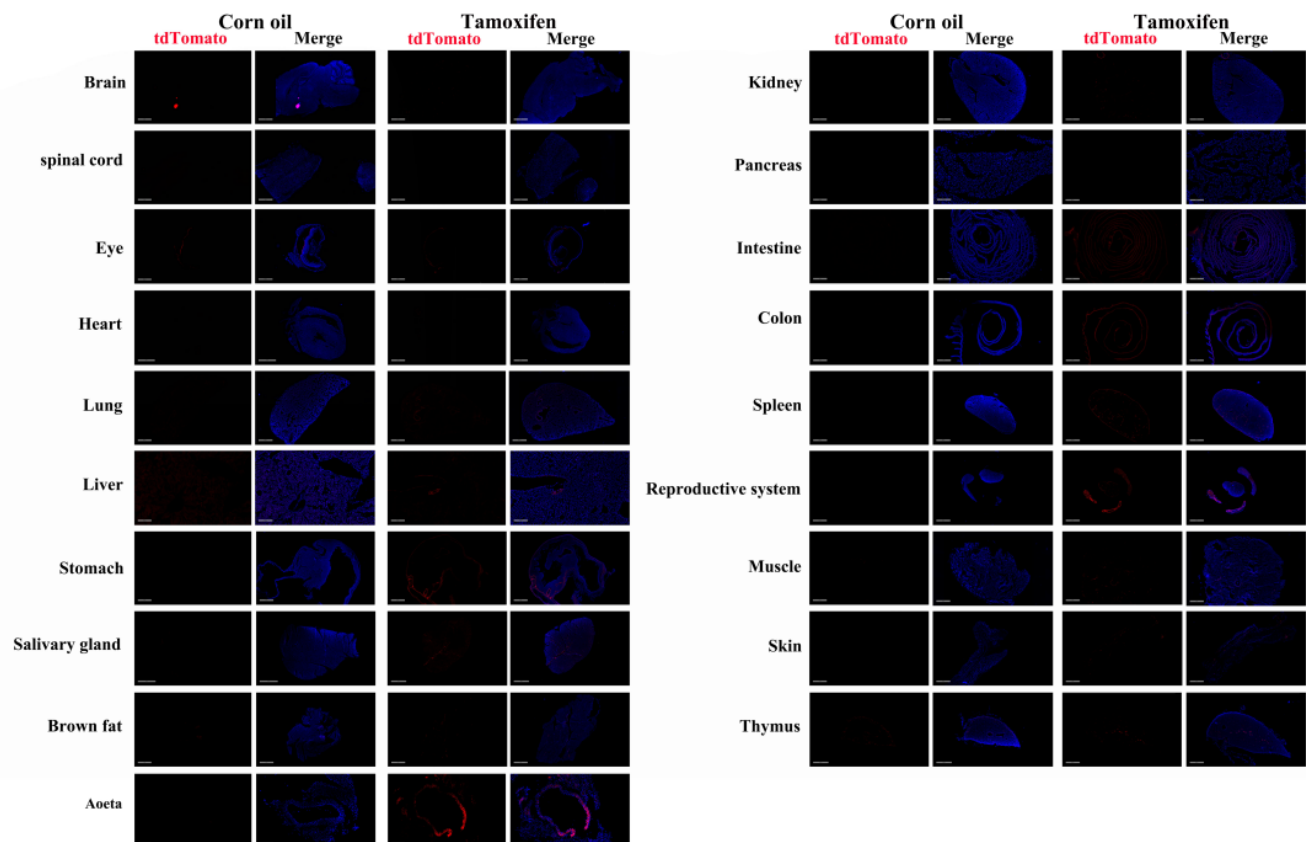


Fig2. Detection of tdTomato(red) in various tissues of TaglnCreERT2/+;Rosa26tdTomato/+ mice. (For more detailed information please contact our technical advisor.)

