

Ins2-CreERT2

Nomenclature	C57BL/6Smoc- <i>Ins2</i> ^{em(CreERT2)1Smoc}
Cat. NO.	NM-KI-225022
Strain State	Sperm cryopreservation

Gene Summary

Gene Symbol Ins2	Synonyms	Mody; Ins-2; InsII; Mody4; AA986540
	NCBI ID	16334
	MGI ID	96573
	Ensembl ID	ENSMUSG00000000215
	Human Ortholog	INS2

Model Description

CreERT2 expression cassette was knocked into the Ins2 gene .

*Literature published using this strain should indicate: Ins2-CreERT2 mice (Cat. NO. NM-KI-225022) were purchased from Shanghai Model Organisms Center, Inc..

Validation Data

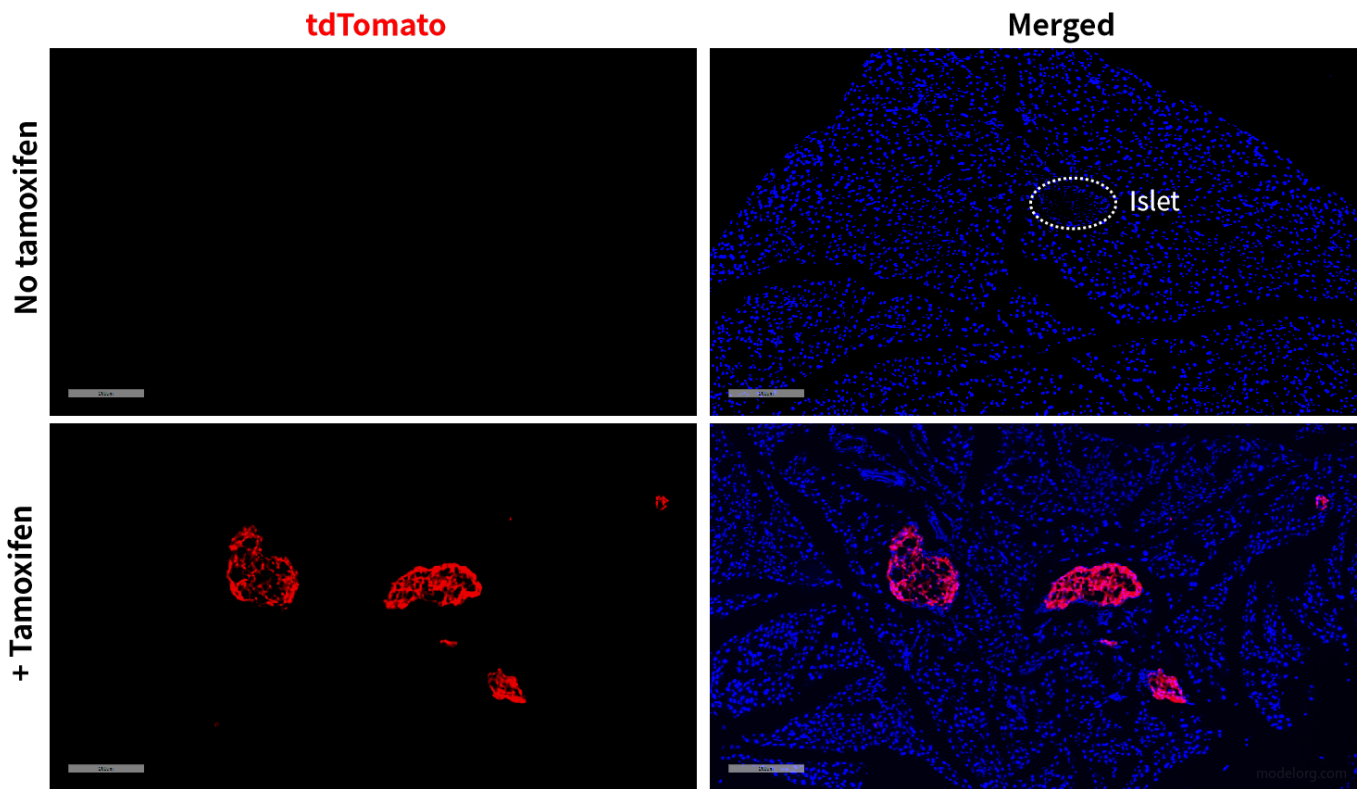


Fig 1. CreERT2-mediated recombination in pancreas of $Ins2^{CreERT2/+}; Rosa26^{tdTomato/+}$ mice.

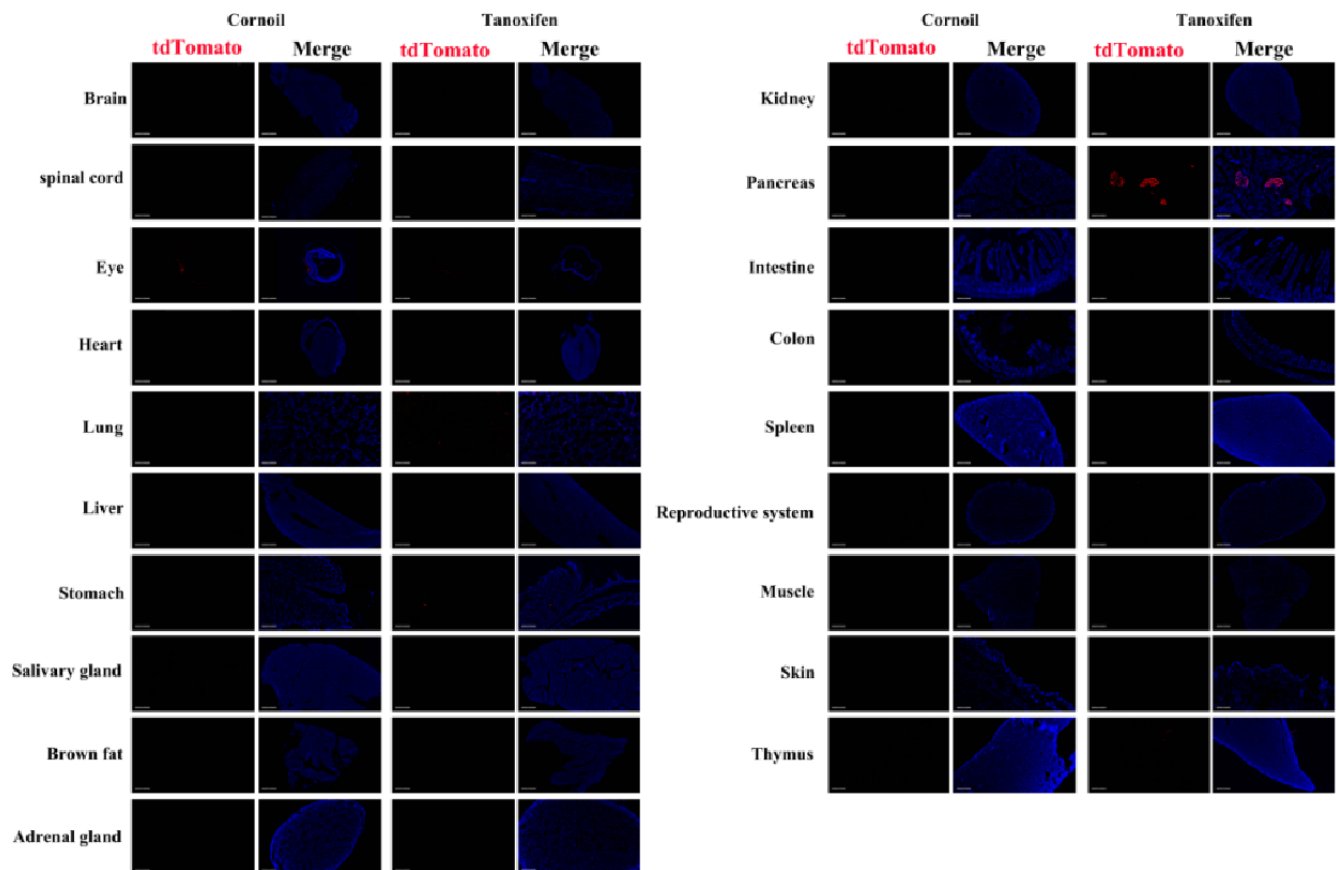


Fig 2. Detection of tdTomato(red) in various tissues of $Ins2^{CreERT2/+}; Rosa26^{tdTomato/+}$ mice.

Expression tissues include: pancreas, brain(choroid plexus). A few cells expressed in lung, stomach, small intestine, testis, thymus. Tissues that unexpressed include spinal cord, retina, liver, heart, salivary glands, brown fat, adrenal gland, kidneys, colon, spleen, muscle, skin. (7.3-week old, male) (For more detailed information please contact our technical advisor.)
