

hCB1

Nomenclature	C57BL/6Smoc- <i>Cnr1</i> ^{em1(hCB1)Smoc}
Cat. NO.	NM-HU-225027
Strain State	Repository Live

Gene Summary

Gene Symbol Cnr1	Synonyms	CB1; CB-R; CB1R
	NCBI ID	12801
	MGI ID	104615
	Ensembl ID	ENSMUSG00000044288
	Human Ortholog	CNR1

Model Description

The endogenous mouse *Cnr1* gene was replaced by human CB1 gene.

*Literature published using this strain should indicate: hCB1 mice (Cat. NO. NM-HU-225027) were purchased from Shanghai Model Organisms Center, Inc..

Validation Data

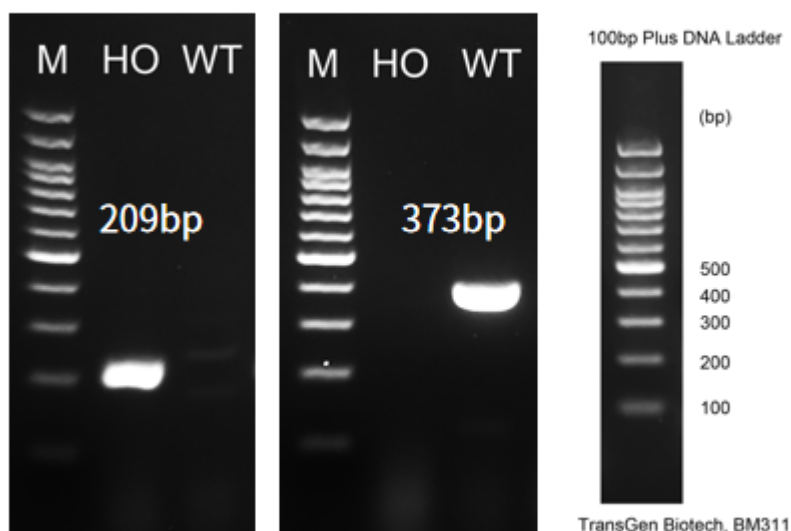


Fig1. Detection of CB1 expression in cerebellum by RT-PCR.

Wild type: only one band at 373 bp with primers F1/R1(mCb1);

Homozygous: only one band at 209 bp with primers F2/R2(hCB1);

Abbr. M, DNA marker; HO, homozygous; WT, wild type.

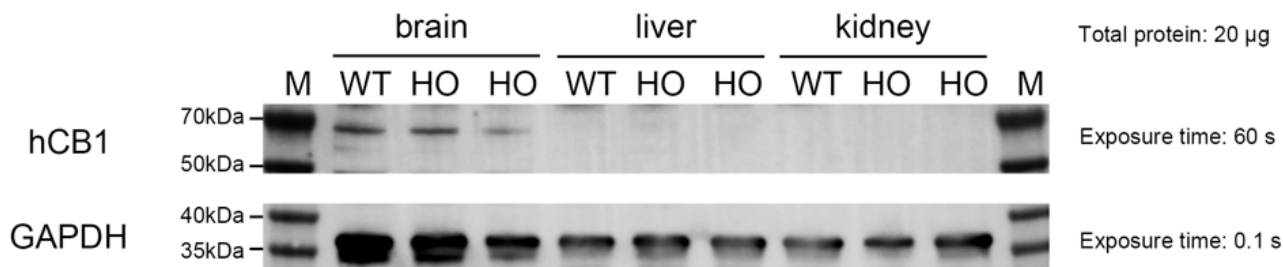


Fig2. Detection of human CB1 expression in Brains, liver and kidney in hCB1 knockin mice by WB.

Abbr. HO, homozygous; WT, wild type.

Note. The anti-human CB1 Antibody cross-reacted with mouse CB1 and humanized CB1.

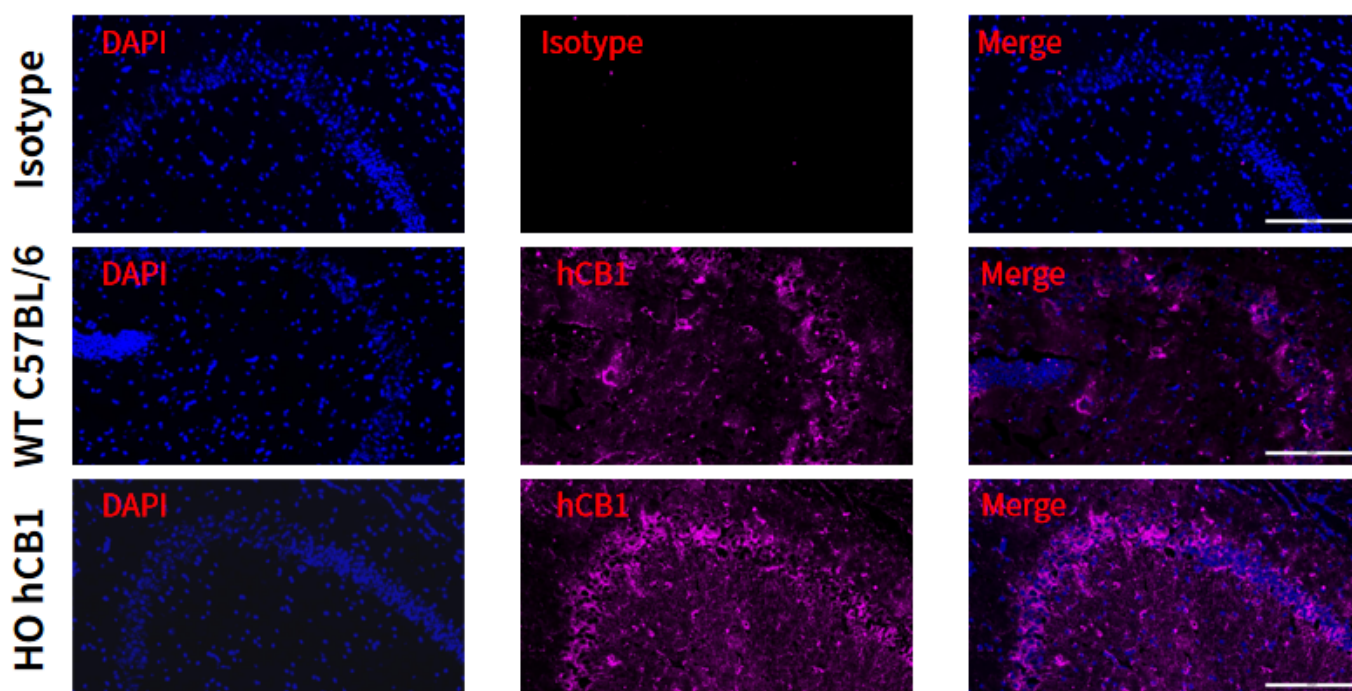


Fig3. Detection of human CB1 expression in brain (Hippocampus) in hCB1 knockin mice by IF.

Brains were collected from wild-type mice and HO hCB1 mice, and analyzed by IF with anti-human CB1 antibody.

Abbr. HO, homozygous; WT, wild type.

Note. The anti-human CB1 Antibody cross-reacted with mouse CB1 and humanized CB1.

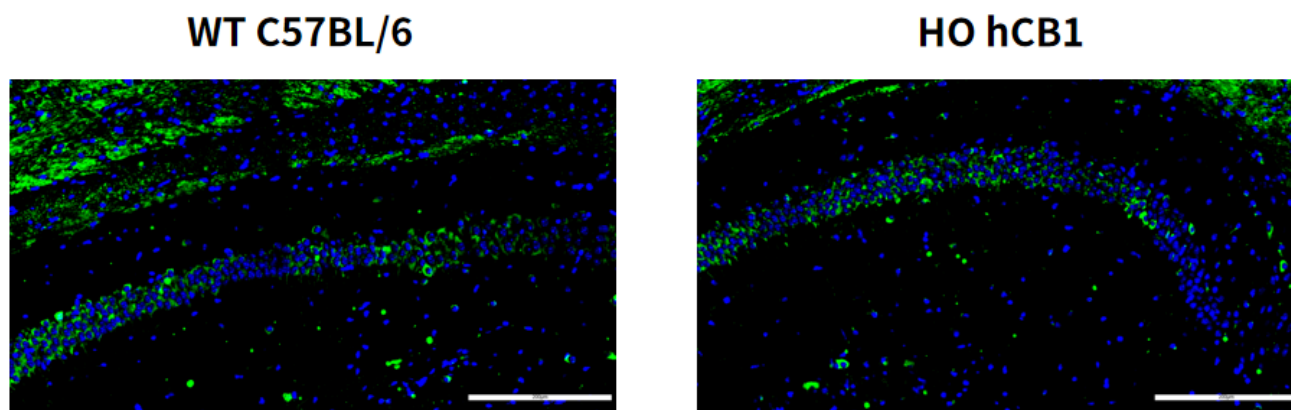


Fig4. Detection of human CB1 expression in CA1 in hCB1 knockin mice by IF.

Brains were collected from wild-type mice and HO hCB1 mice, and analyzed by IF with anti-human CB1 antibody.

Abbr. HO, homozygous; WT, wild type.

Note. The anti-human CB1 Antibody cross-reacted with mouse CB1 and humanized CB1.

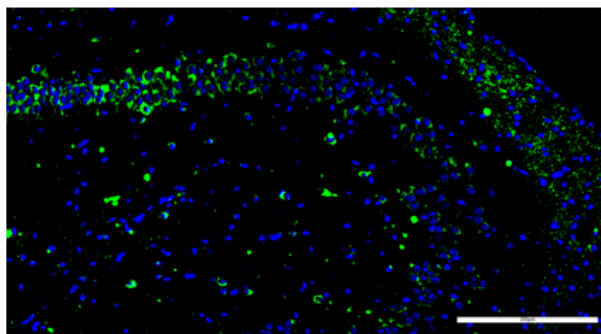
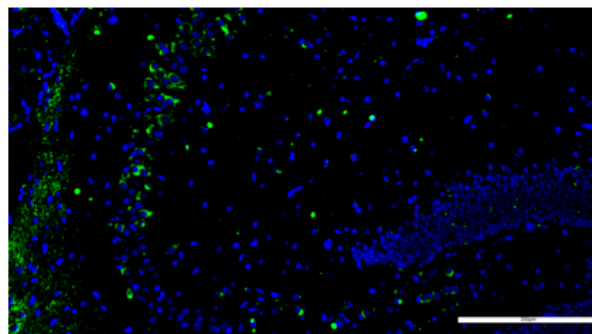
WT C57BL/6

HO hCB1


Fig5. Detection of human CB1 expression in CA3 in hCB1 knockin mice by IF.

Brains were collected from wild-type mice and HO hCB1 mice, and analyzed by IF with anti-human CB1 antibody.

Abbr. HO, homozygous; WT, wild type.

Note. The anti-human CB1 Antibody cross-reacted with mouse CB1 and humanized CB1.

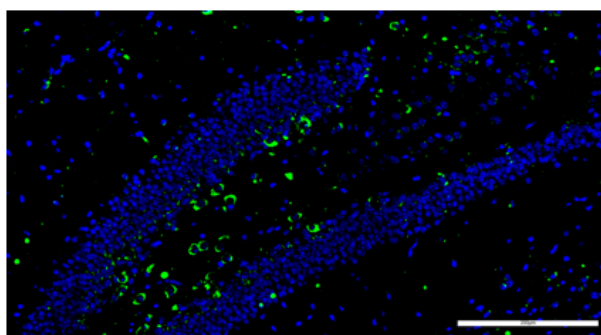
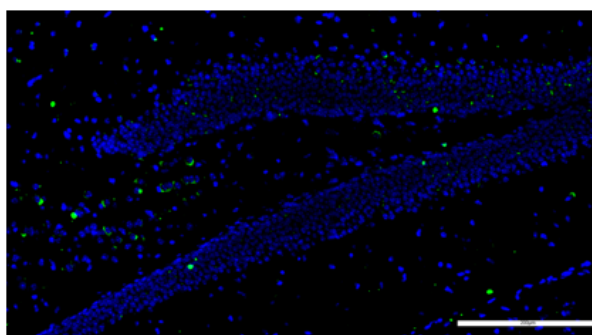
WT C57BL/6

HO hCB1 #A2


Fig6. Detection of human CB1 expression in dentate gyrus(DG) in hCB1 knockin mice by IF.

Brains were collected from wild-type mice and HO hCB1 mice, and analyzed by IF with anti-human CB1 antibody.

Abbr. HO, homozygous; WT, wild type.

Note. The anti-human CB1 Antibody cross-reacted with mouse CB1 and humanized CB1.

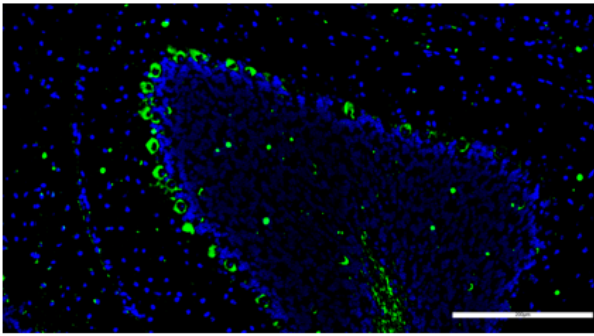
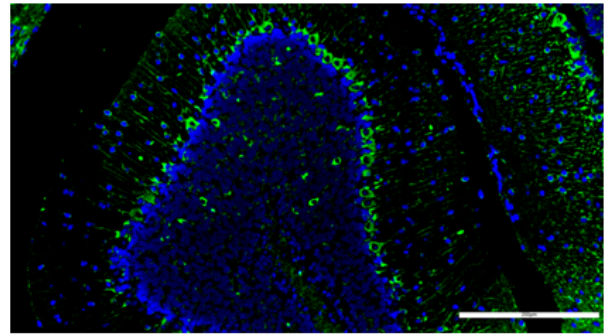
WT C57BL/6**HO hCB1 #A2**

Fig7. Detection of human CB1 expression in cerebellum in hCB1 knockin mice by IF.

Brains were collected from wild-type mice and HO hCB1 mice, and analyzed by IF with anti-human CB1 antibody.

Abbr. HO, homozygous; WT, wild type.

Note. The anti-human CB1 Antibody cross-reacted with mouse CB1 and humanized CB1.