

hCALCRL

Nomenclature	C57BL/6Smoc- <i>Calcr</i> ^{em1(hCALCRL)Smoc}
Cat. NO.	NM-HU-225031
Strain State	Embryo cryopreservation

Gene Summary

Gene Symbol Calcr	Synonyms	CRLR; AV071593
	NCBI ID	54598
	MGI ID	1926944
	Ensembl ID	ENSMUSG00000059588
	Human Ortholog	CALCRL

Model Description

The endogenous mouse *Calcr* gene was replaced by human CALCRL gene.

*Literature published using this strain should indicate: hCALCRL mice (Cat. NO. NM-HU-225031) were purchased from Shanghai Model Organisms Center, Inc..

Validation Data

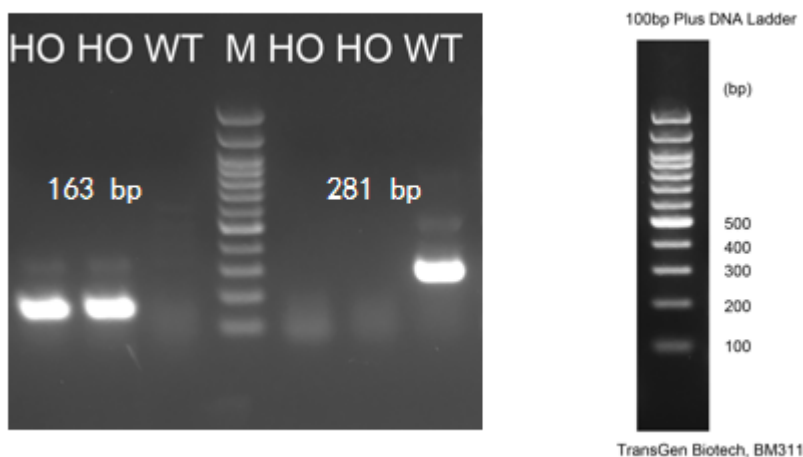


Fig1. Detection of CALCRL expression in lung by RT-PCR. Wild type: only one band at 281 bp with

primers F1/R1 (mCalcrl); Homozygous: only one band at 163 bp with primers F2/R2 (hCALCRL).
Abbr. M, DNA marker; HO, homozygous; WT, wild type.

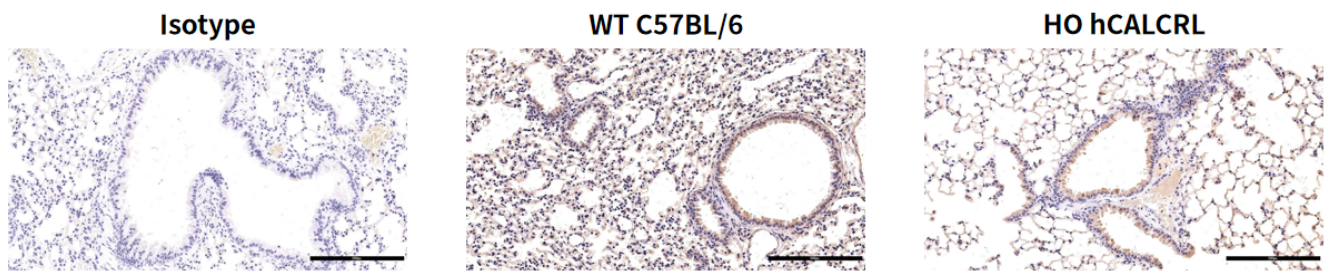


Fig2. Detection of hCALCRL expression in Lung in C57BL/6 and HO hCALCRL knockin mice by IHC. Abbr. HO, homozygous; WT, wild type. Note. The anti-human CALCRL Antibody cross-reacted with mouse CALCRL and humanized CALCRL.