

# hITGB1

<b>Nomenclature</b>	C57BL/6Smoc- <i>Itgb1</i> <sup>em1(hITGB1)Smoc</sup>
<b>Cat. NO.</b>	NM-HU-225040
<b>Strain State</b>	Embryo cryopreservation

## Gene Summary

<b>Gene Symbol</b> <b>Itgb1</b>	<b>Synonyms</b>	CD29; Fnrb; gpIIa; Gm9863; AA409975; AA960159; 4633401G24Rik
	<b>NCBI ID</b>	<a href="#">16412</a>
	<b>MGI ID</b>	<a href="#">96610</a>
	<b>Ensembl ID</b>	<a href="#">ENSMUSG00000025809</a>
	<b>Human Ortholog</b>	ITGB1

## Model Description

The endogenous mouse *Itgb1* gene was replaced by human ITGB1 gene.

\*Literature published using this strain should indicate: hITGB1 mice (Cat. NO. NM-HU-225040) were purchased from Shanghai Model Organisms Center, Inc..

## Validation Data

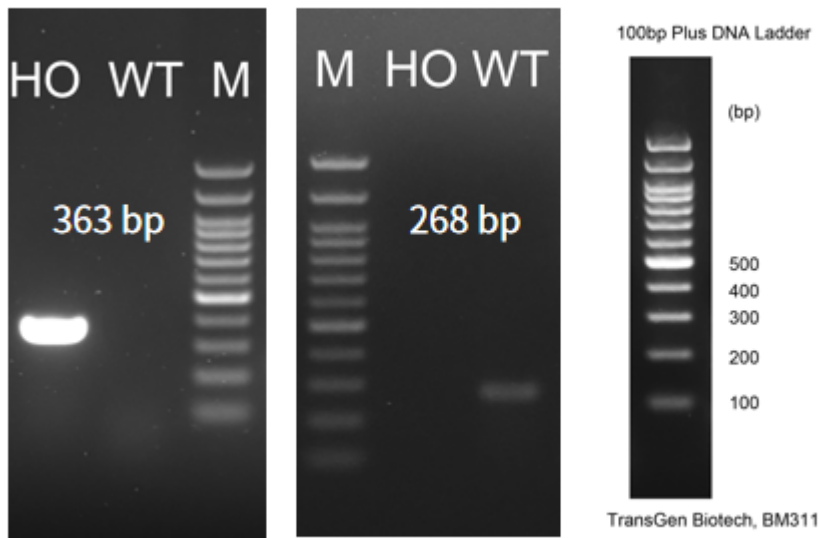


Fig1. Detection of ITGB1 expression in bladder by RT-PCR.

Wild type: only one band at 268 bp with primers F1/R1(mltgb1);

Homozygous: only one band at 363 bp with primers F2/R2(hITGB1);

Abbr. M, DNA marker; HO, homozygous; WT, wild type.

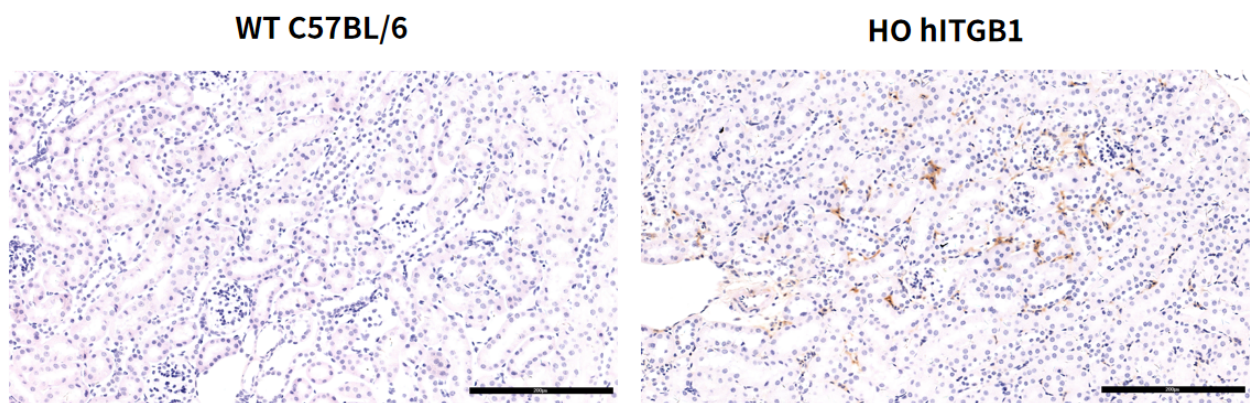
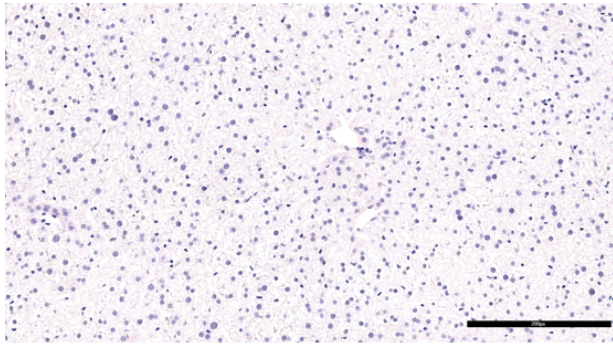


Fig2. Detection of human ITGB1 expression in Kidney in C57BL/6 and HO hITGB1 mice by IHC. (Abbr. HO, homozygous; WT, wild type.)

**WT C57BL/6**



**HO hITGB1**

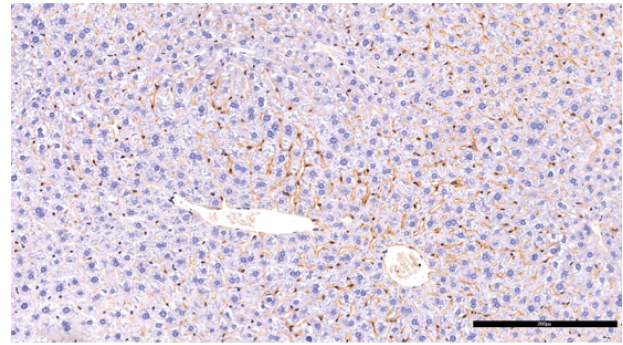


Fig3. Detection of human ITGB1 expression in Liver in C57BL/6 and HO hITGB1 mice by IHC. (Abbr. HO, homozygous; WT, wild type.)