

R26-CreERT2(2)

Nomenclature	C57BL/6Smoc- <i>Gt(ROSA)26Sor</i> ^{em(SA-FRT-CreERT2-Rox-WPRE-Rox-polyA)Smoc}
Cat. NO.	NM-KI-220020
Strain State	Sperm cryopreservation

Gene Summary

Gene Symbol Gt(ROSA)26Sor	Synonyms	R26, ROSA26, AV258896, Gtrg eo26, Gtrosa26, Thumpd3as1
	NCBI ID	14910
	MGI ID	104735
	Ensembl ID	ENSMUSG00000086429

Model Description

SA-FRT-CreERT2-Rox-WPRE-Rox-polyA expression cassette was knocked into the the Rosa26 locus. While R26-CreERT2(Stock No.NM-KI-200041) mice function similarly to R26-CreERT2(2) mice,for more detailed information please contact our technical advisor.

*Literature published using this strain should indicate: R26-CreERT2(2) mice (Cat. NO. NM-KI-220020) were purchased from Shanghai Model Organisms Center, Inc..

Validation Data

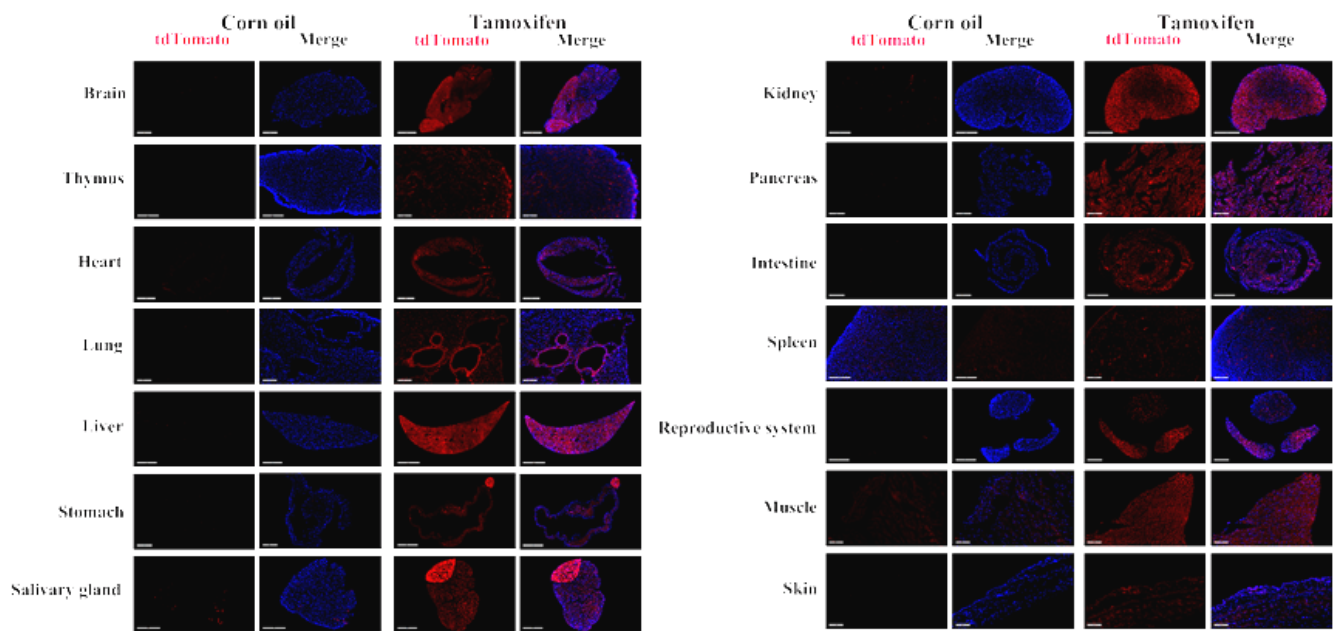


Fig1. Detection of tdTomato(red) in various tissues of *Rosa26CreERT2/+; Rosa26tdTomato/+* mice. Tdtomato was expressed in the brain, thymus, heart, lung, liver, stomach, salivary gland, kidney, pancreas, intestine, spleen, testis, epididymis, muscle and skin. Some leakiness can be detected in the salivary gland, spleen, kidney and muscle prior to tamoxifen exposure. (For more detailed information please contact our technical advisor.)