

# Mrc1-2A-CreERT2

<b>Nomenclature</b>	C57BL/6Smoc- <i>Mrc1</i> <sup>em(2A-CreERT2)Smoc</sup>
<b>Cat. NO.</b>	NM-KI-220031
<b>Strain State</b>	Repository Live

## Gene Summary

<b>Gene Symbol</b> <b>Mrc1</b>	<b>Synonyms</b>	MR; CD206; AW259686
	<b>NCBI ID</b>	<a href="#">17533</a>
	<b>MGI ID</b>	<a href="#">97142</a>
	<b>Ensembl ID</b>	<a href="#">ENSMUSG00000026712</a>
	<b>Human Ortholog</b>	MRC1

## Model Description

2A-CreERT2 expression cassette was knocked into the *Mrc1* gene stop codon site.

\*Literature published using this strain should indicate: *Mrc1*-2A-CreERT2 mice (Cat. NO. NM-KI-220031) were purchased from Shanghai Model Organisms Center, Inc..

## Validation Data

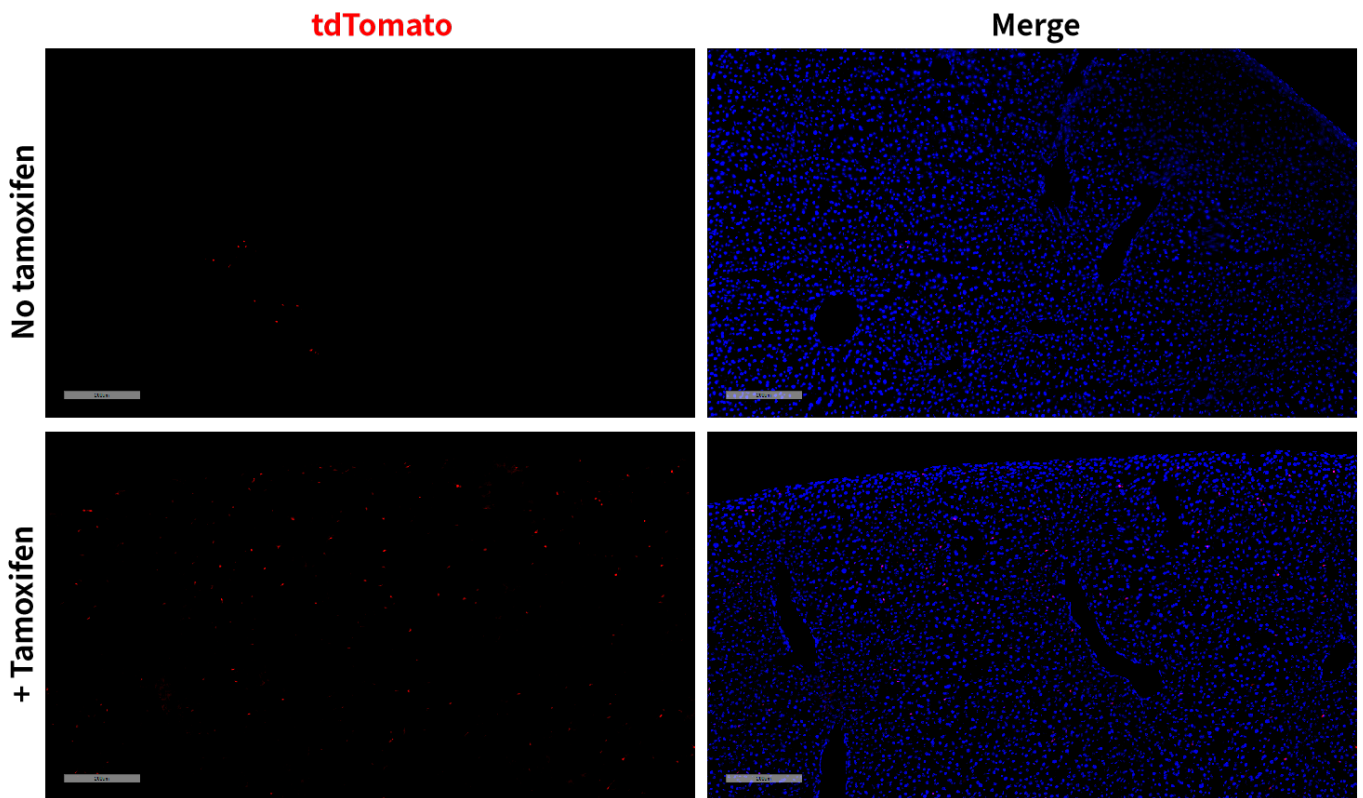


Fig 1. Cre-mediated recombination in liver of *Mrc1CreERT2/+; Rosa26tdTomato/+* mice.

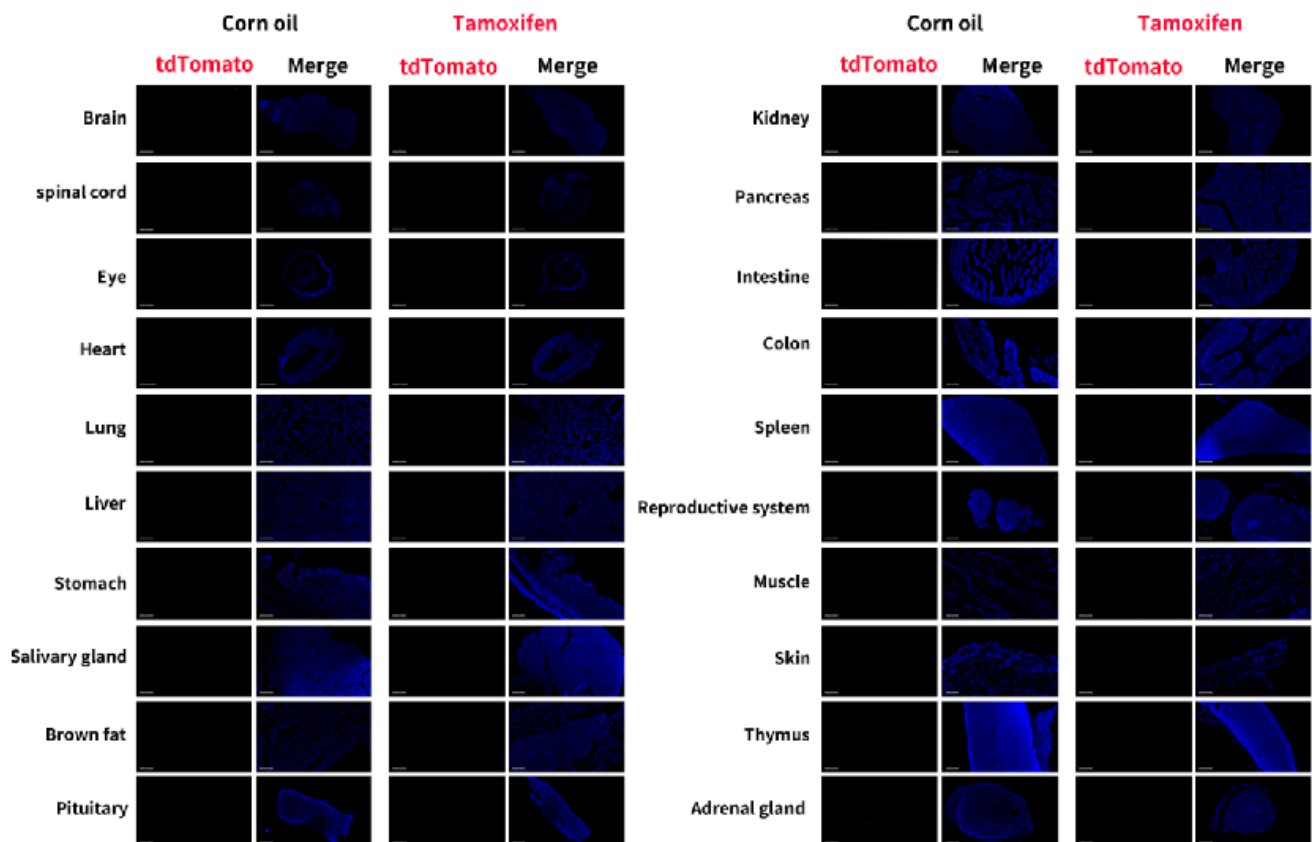


Fig 2. Detection of tdTomato (red) in various tissues of *Mrc1CreERT2/+; Rosa26tdTomato/+* mice. Expression tissues include: liver. A few cells expressed in large intestine, spleen, skin, thymus. Tissues that unexpressed include brain, spinal cord, retina, heart, lung,

stomach, salivary glands, brown fat, pituitary gland, kidney, pancreas, small intestine, testis, muscle, adrenal gland. (4.5-month old, male) (For more detailed information please contact our technical advisor.)

---