

Klrd1-2A-Cre

| | |
|---------------------|----------------------------------------------------------------|
| Nomenclature | C57BL/6Smoc- <i>Klrd1</i> ^{em(2A-Cre-WPRE-PolyA)Smoc} |
| Cat. NO. | NM-KI-220039 |
| Strain State | Sperm cryopreservation |

Gene Summary

| | | |
|-----------------------------|-----------------------|------------------------------------|
| Gene Symbol Klrd1 | Synonyms | CD94 |
| | NCBI ID | 16643 |
| | MGI ID | 1196275 |
| | Ensembl ID | ENSMUSG00000030165 |
| | Human Ortholog | KLRD1 |

Model Description

2A-Cre-WPRE-PolyA expression cassette was knocked into the Klrd1 gene start codon site.
*Literature published using this strain should indicate: Klrd1-2A-Cre mice (Cat. NO. NM-KI-220039) were purchased from Shanghai Model Organisms Center, Inc..

Validation Data

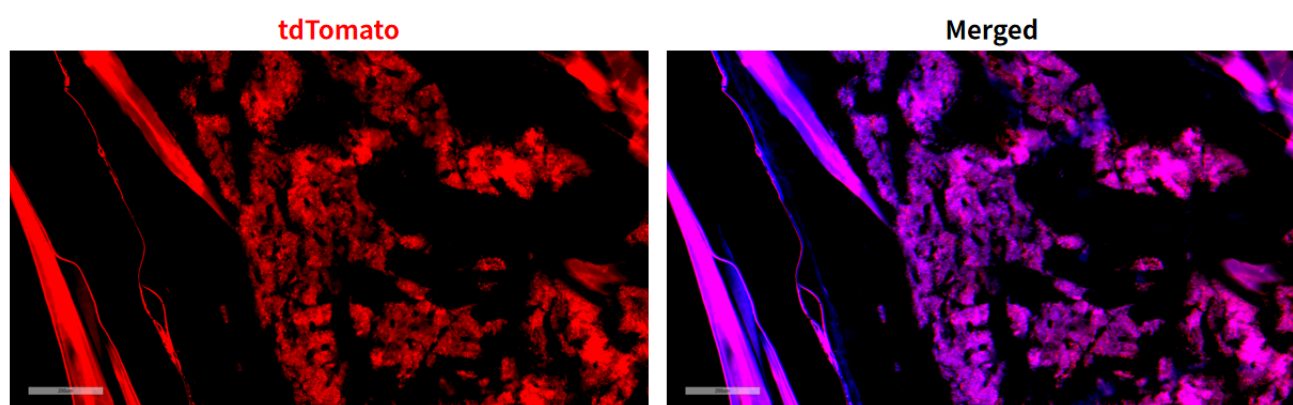


Fig 1. Cre-mediated recombination in bone marrow of Klrd1^{Cre/+}; Rosa26^{tdTomato/+} mice.

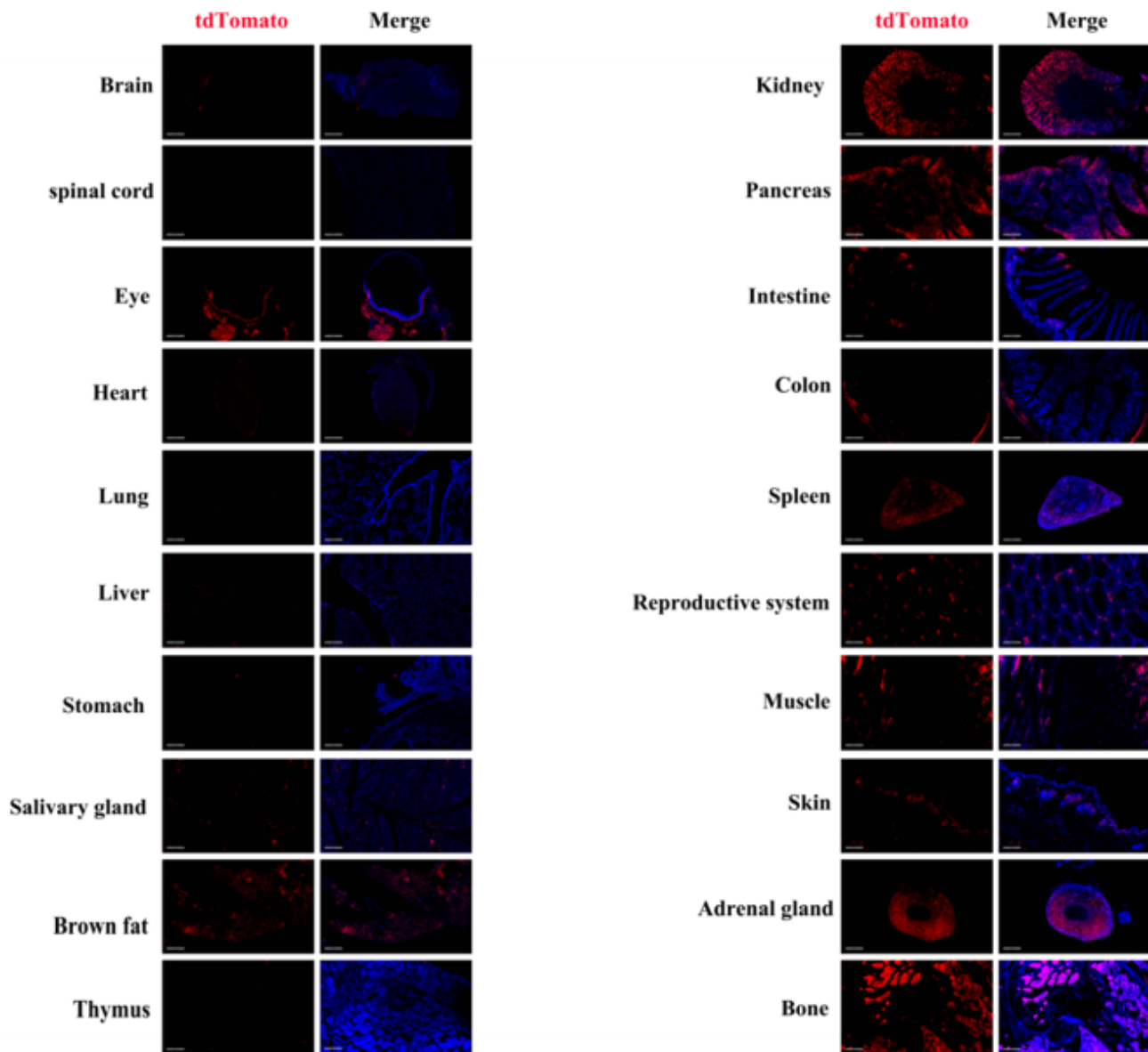


Fig 2. Detection of tdTomato (red) in various tissues of *Klr1cre/+; Rosa26tdTomato/+* mice. Expression tissues include: brain, bone marrow, liver, salivary gland, brown fat, kidney, pancreas, small intestine, colon, spleen, testis, skeletal muscle, skin, adrenal gland. A few cells expressed in eyeball, heart, lung, stomach, thymus. Tissues that unexpressed include spinal cord. (21-week old, male) (For more detailed information please contact our technical advisor.)