

MC38-OVA(2)

Strain Information

Cat. NO.	NM-S13-TG69
Cell Line	MC38-Tg(OVA)Smoc
Strain State	Validation of tumorigenic capacity completed
Model	This MC38 cell line harbors chicken OVA expression cassette.
Description	*Literature published using this strain should indicate: MC38-OVA(2) cell line (Cat. NO. NM-S13-TG69) was purchased from Shanghai Model Organisms Center, Inc..

Validation Data

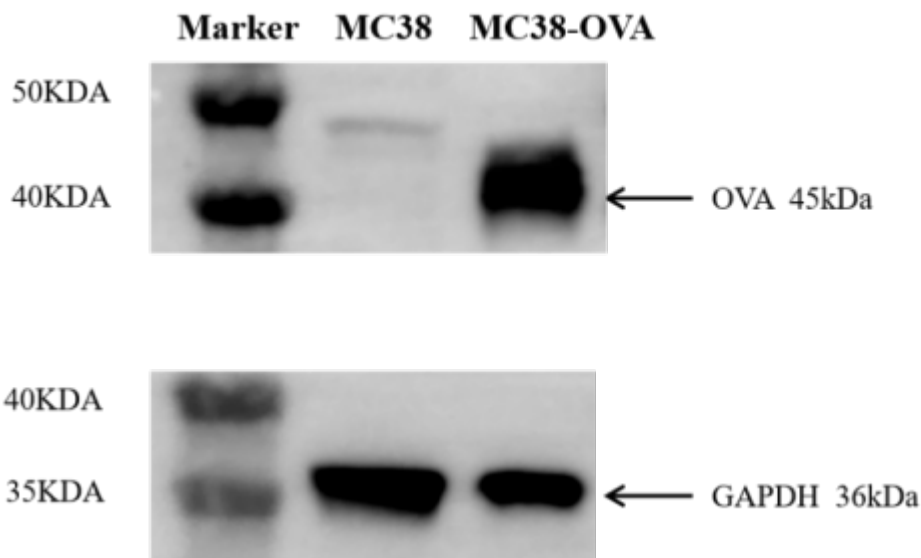


Figure 1. OVA expression in wild-type MC38 and MC38-OVA-Luc cell lines

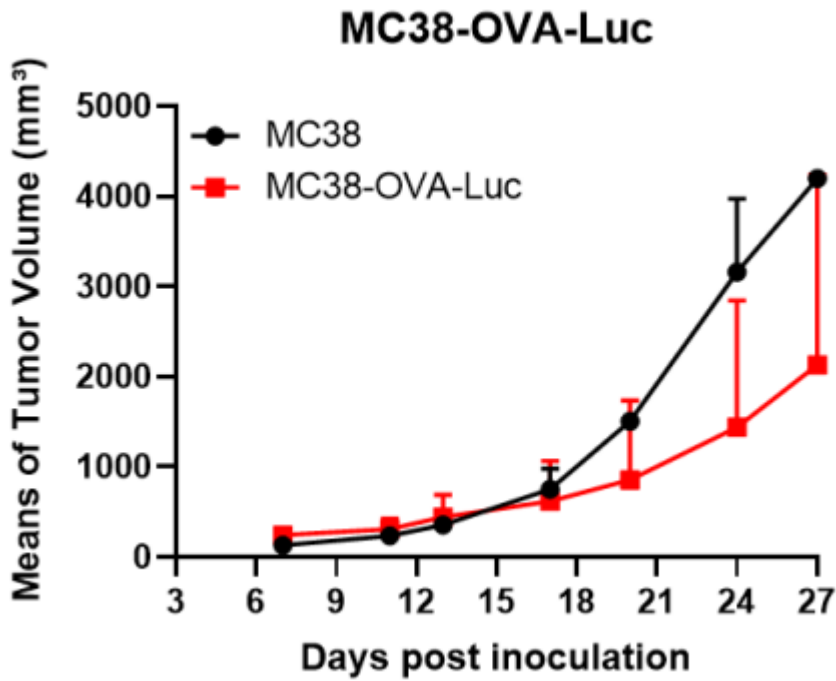


Figure 2. Tumor growth curve of MC38 and MC38-OVA-Luc syngeneic model (n=4)

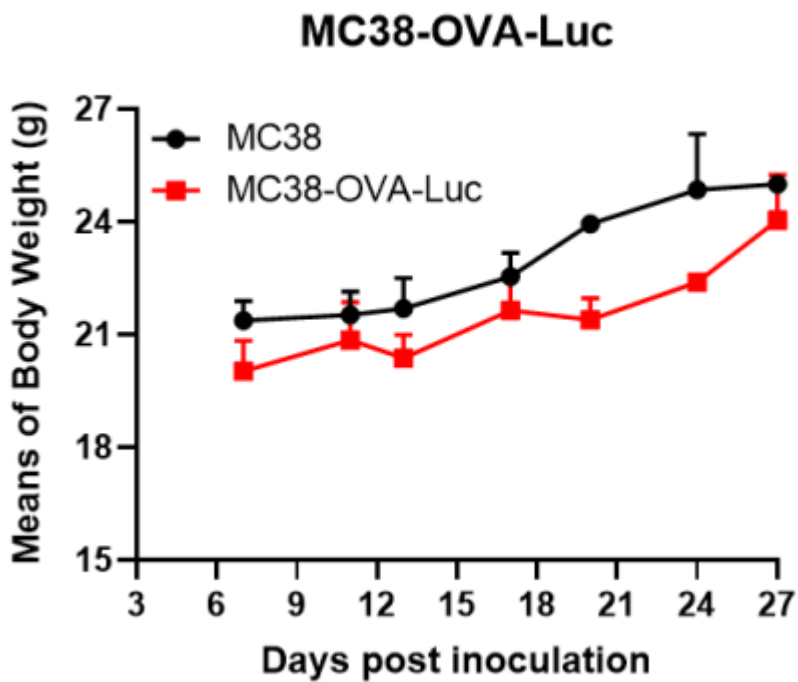


Figure 3. Body weight curve of MC38 and MC38-OVA-Luc syngeneic model (n=4)

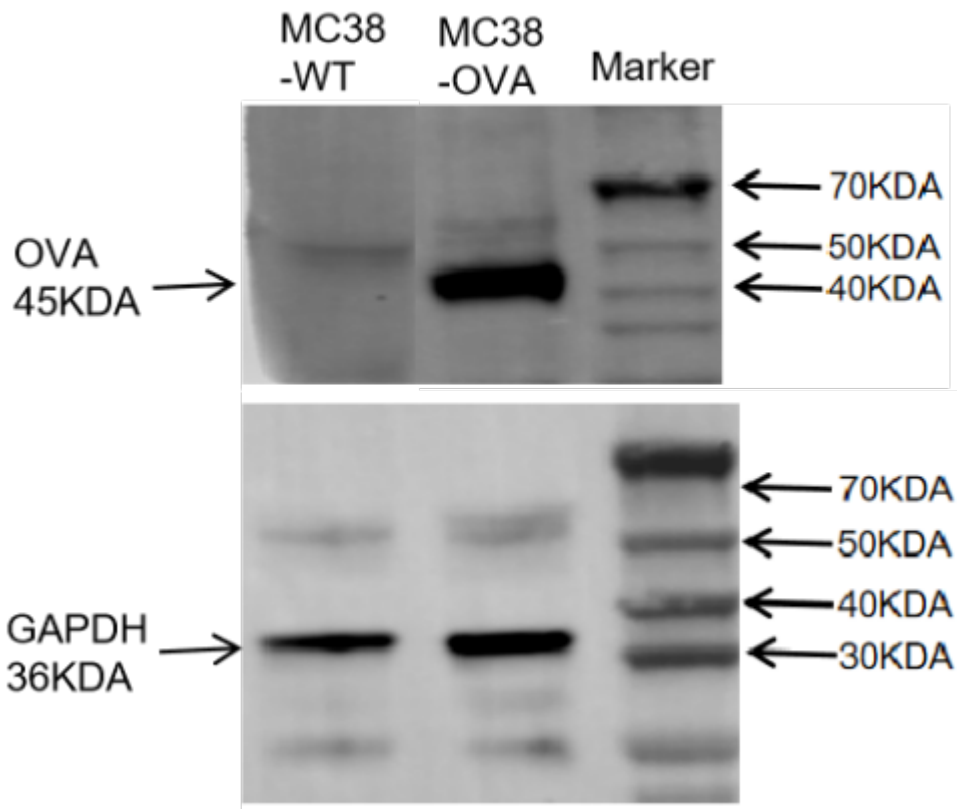


Figure 4. The expression of OVA in tumors by Western Blot