

K562-Luc

Strain Information

Cat. NO.	NM-B05-1
Cell Line	K562-Tg(luc)/smoc
Strain State	Validation of tumorigenic capacity completed
Model	Luciferase-labeled human K562 cell
Description	*Literature published using this strain should indicate: K562-Luc cell line (Cat. NO. NM-B05-1) was purchased from Shanghai Model Organisms Center, Inc..

Validation Data

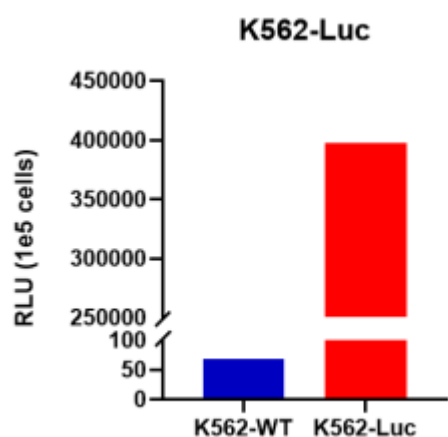


Figure 1. Luciferase activity assay of K562-Luc cell line

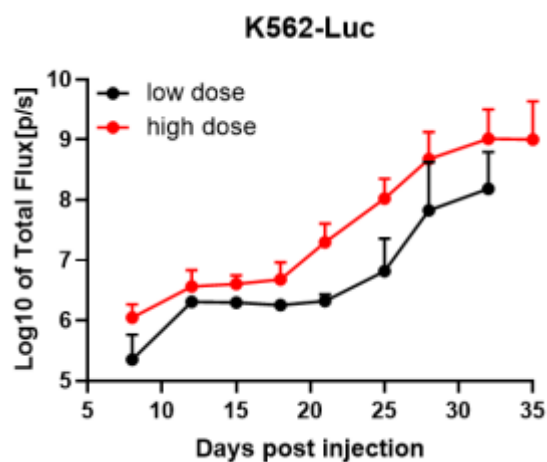


Figure 2. Signal increase curve in K562-Luc xenograft model (n=6)

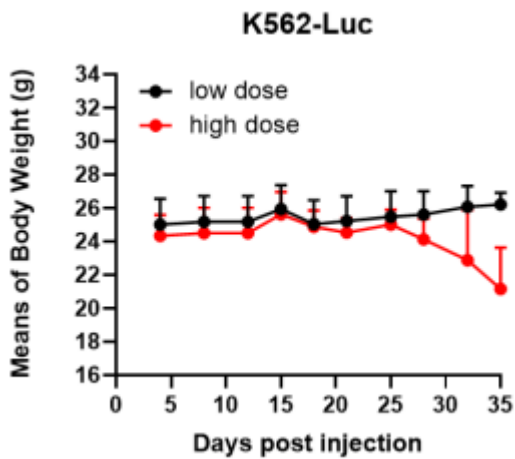


Figure 3. Body weight change of K562-Luc xenograft model (n=6)

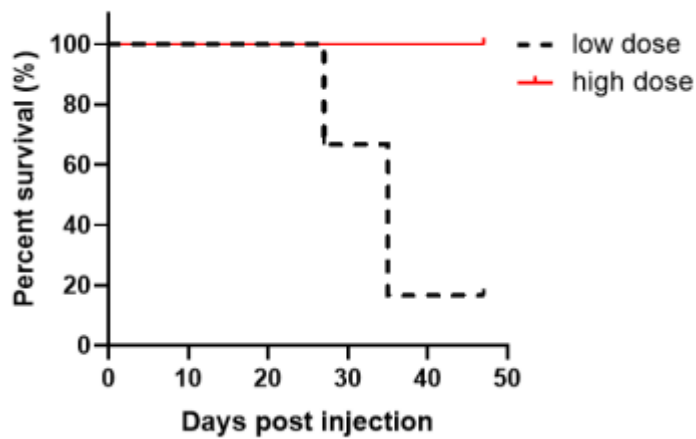


Figure 4. Survival curve of K562-Luc xenograft mouse model (n=6)

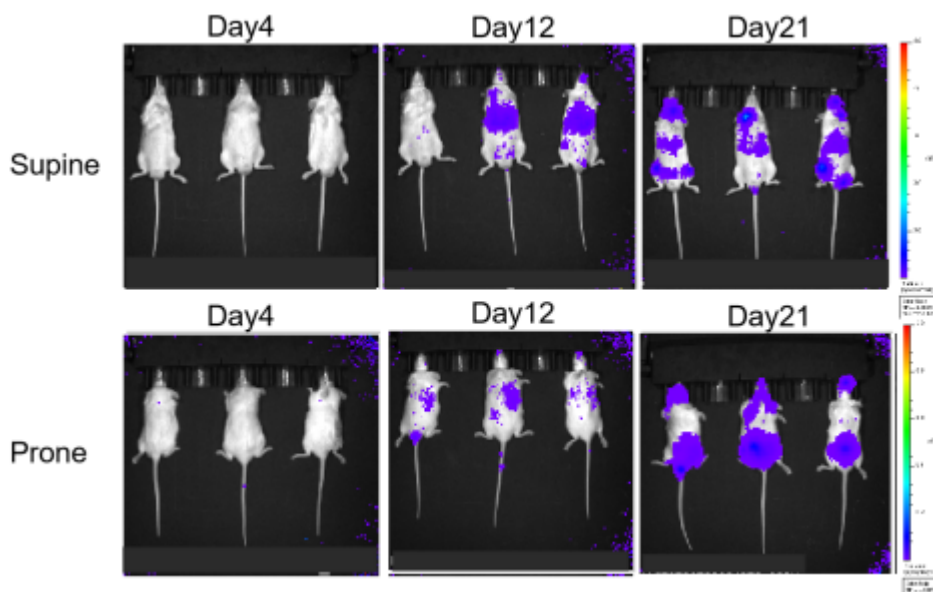


Figure 5. Bioluminescence imaging of K562-Luc xenograft mouse model (n=6)

