

NCI-H1650

Strain Information

Cat. NO.	NM-F09
Cell Line	NCI-H1650
Strain State	Validation of tumorigenic capacity completed
Model Description	NCI-H1650 is a cell line exhibiting epithelial morphology that was isolated in 1987 from the lung tissue of a 27-year-old, male smoker with stage 3B, bronchoalveolar carcinoma.
	*Literature published using this strain should indicate: NCI-H1650 cell line (Cat. NO. NM-F09) was purchased from Shanghai Model Organisms Center, Inc..

Validation Data

I. Characterization of in vivo growth kinetics

The NCI-H1650 cells were subcutaneously inoculated into the M-NSG mice.

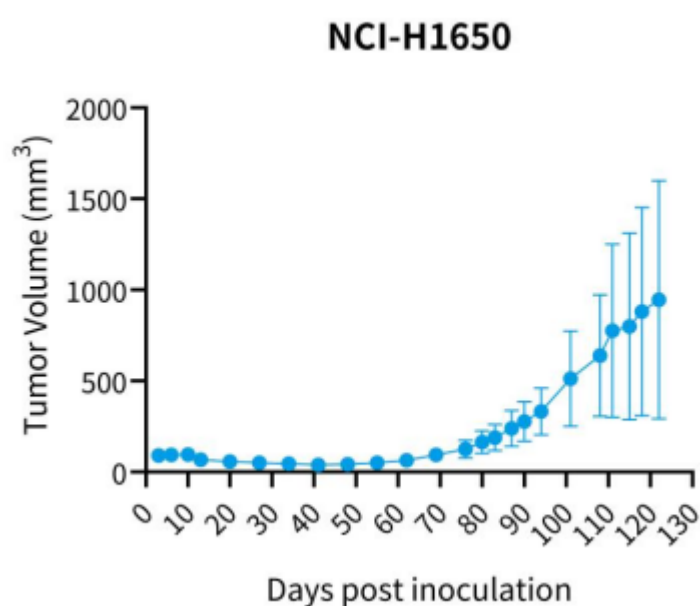


Figure 1. Tumor growth curve of NCI-H1650 xenograft model (n=12)

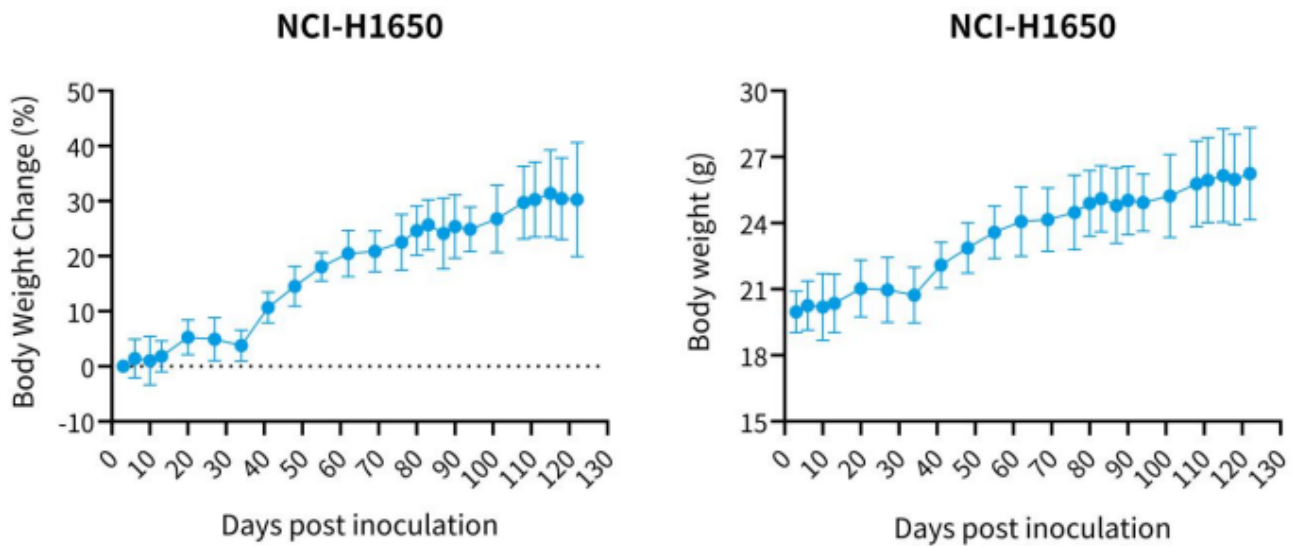


Figure 2. Body weight change of NCI-H1650 xenograft model (n=12)

Survival

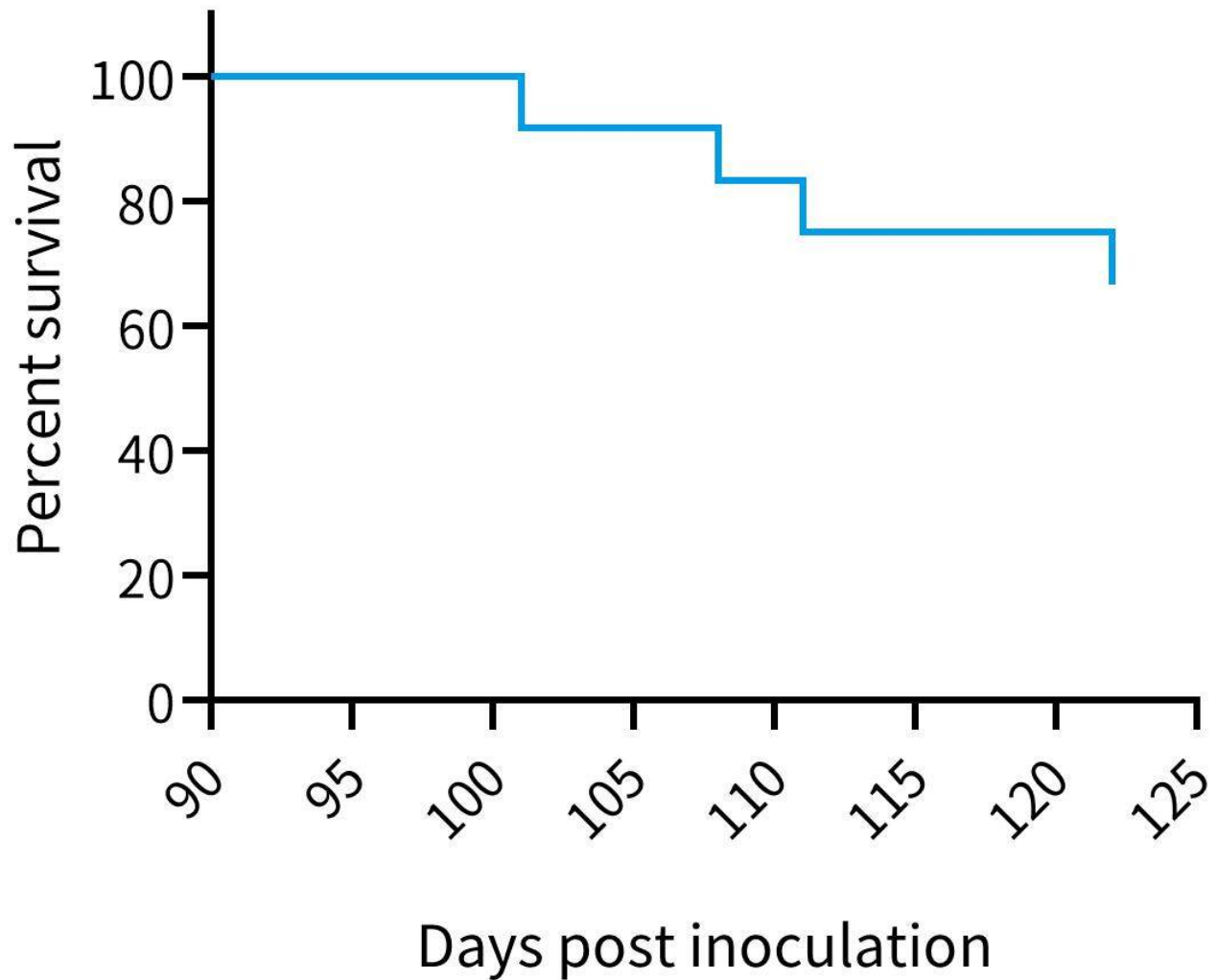


Figure 3. Survival curve of NCI-H1650 xenograft model (n=12)

*Wild-type cell lines are not for sale, and only applied to construction of tumor bearing mice and in-vivo efficacy studies.