

# Calu-6

## Strain Information

Cat. NO.	NM-F12
Cell Line	Calu-6
Strain State	Validation of tumorigenic capacity completed
Model Description	CaLu-06 is a human lung adenocarcinoma cell line. This cell line was established in 1971 from lung metastasis in lung adenocarcinoma.
	*Literature published using this strain should indicate: Calu-6 cell line (Cat. NO. NM-F12) was purchased from Shanghai Model Organisms Center, Inc..

## Validation Data

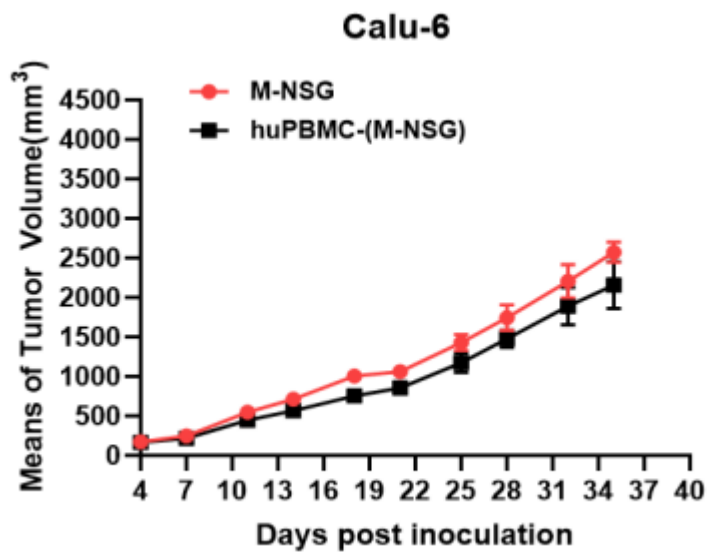


Fig1. Tumor growth curve of Calu-6 xenograft model (n=4)

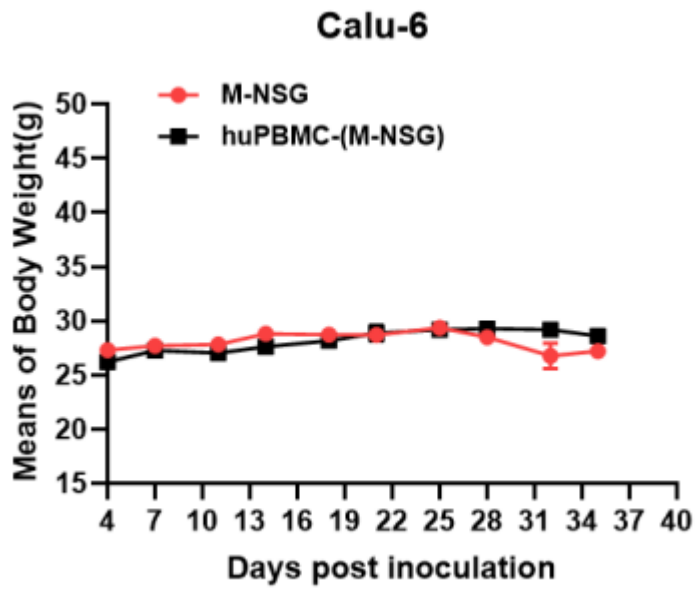


Fig2. Body weight change of Calu-6 xenograft model (n=4)

\*Wild-type cell lines are not for sale, and only applied to construction of tumor bearing mice and in-vivo efficacy studies.