

EBC-1

Strain Information

Cat. NO. NM-F23

Cell Line EBC-1

Strain State Validation of tumorigenic capacity completed

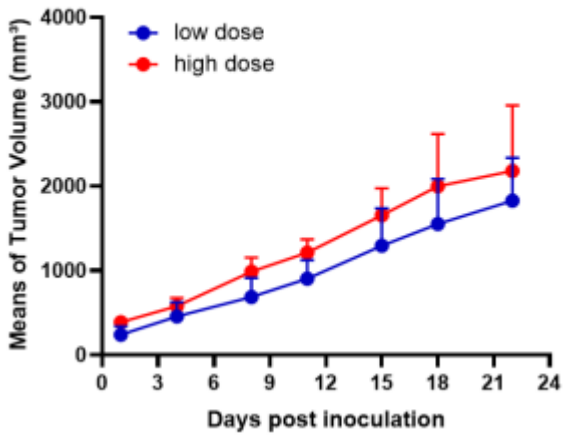
Model Description The EBC-1 line was established from a metastatic skin tumor of a patient with squamous cell carcinoma of the lung.

*Literature published using this strain should indicate: EBC-1 cell line (Cat. NO. NM-F23) was purchased from Shanghai Model Organisms Center, Inc..

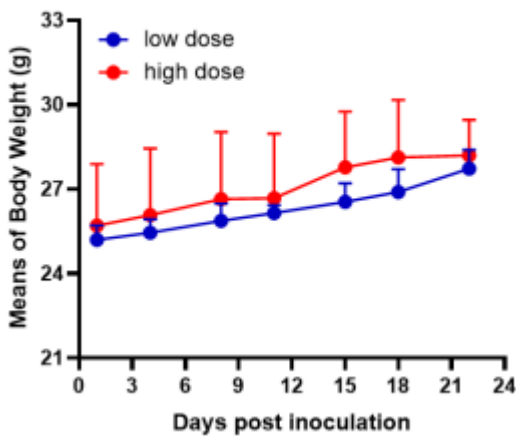
Validation Data



Fig1. Morphology of EBC-1 cell line.

EBC-1


A

EBC-1


B

Fig2. Analysis of Tumorigenesis in M-NSG mice (n=4) . a Tumor volume was measured by time. b Body weight was simultaneously checked.

*Wild-type cell lines are not for sale, and only applied to construction of tumor bearing mice and in-vivo efficacy studies.