

# HGC-27

## Strain Information

Cat. NO.	NM-W03
Cell Line	HGC-27
Strain State	Validation of tumorigenic capacity completed
Model Description	HGC-27 was established by culture of the metastatic lymph node from a gastric cancer patient diagnosed histologically as undifferentiated carcinoma.  *Literature published using this strain should indicate: HGC-27 cell line (Cat. NO. NM-W03) was purchased from Shanghai Model Organisms Center, Inc..

## Validation Data

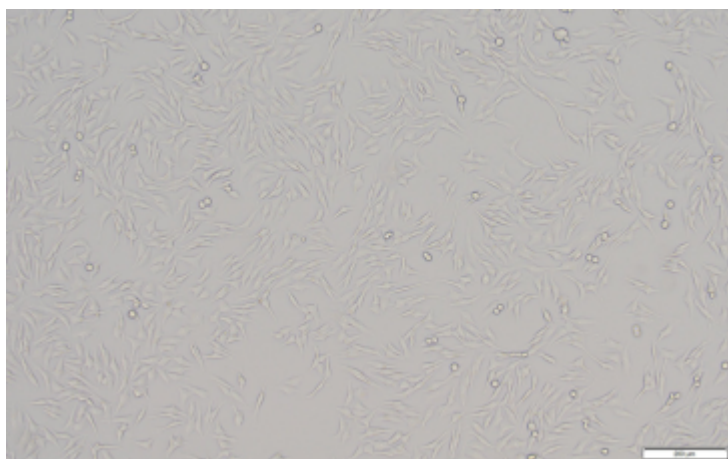
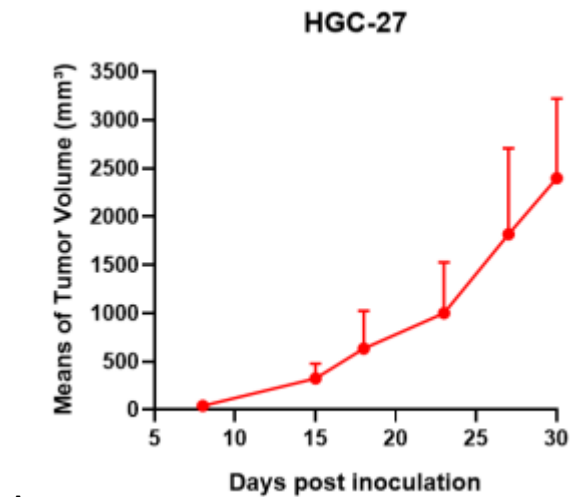
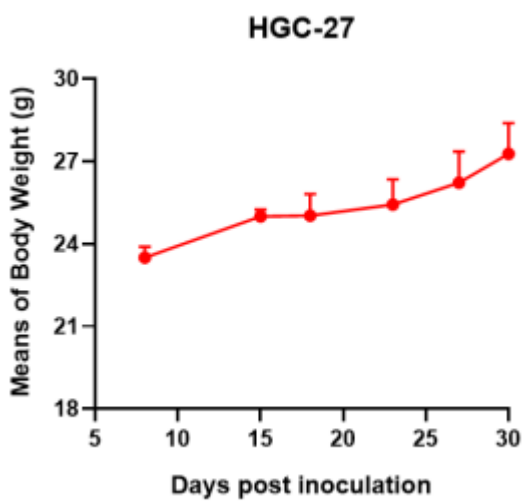


Fig1. Morphology of HGC-27 cell line.



A



B

Fig2. Analysis of Tumorigenesis in M-NSG mice (n=4) . HGC-27 cells were subcutaneously inoculated in M-NSG mice. a Tumor volume was measured by time. b Body weight was simultaneously checked.

\*Wild-type cell lines are not for sale, and only applied to construction of tumor bearing mice and in-vivo efficacy studies.