

# A2780

## Strain Information

Cat. NO.	NM-RC02
Cell Line	A2780
Strain State	Validation of tumorigenic capacity completed
Model Description	The A2780 human ovarian cancer cell line was established from tumor tissue from an untreated patient with ovarian endometrioid adenocarcinoma.

\*Literature published using this strain should indicate: A2780 cell line (Cat. NO. NM-RC02) was purchased from Shanghai Model Organisms Center, Inc..

## Validation Data

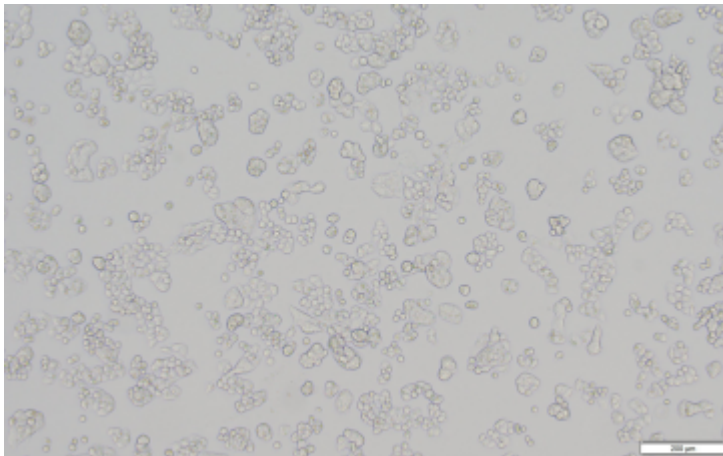
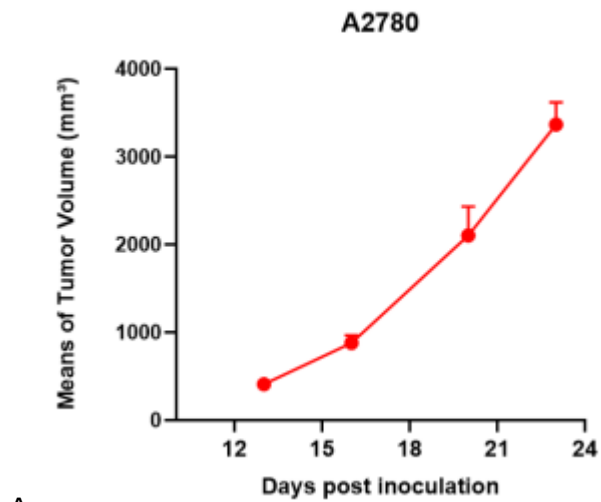
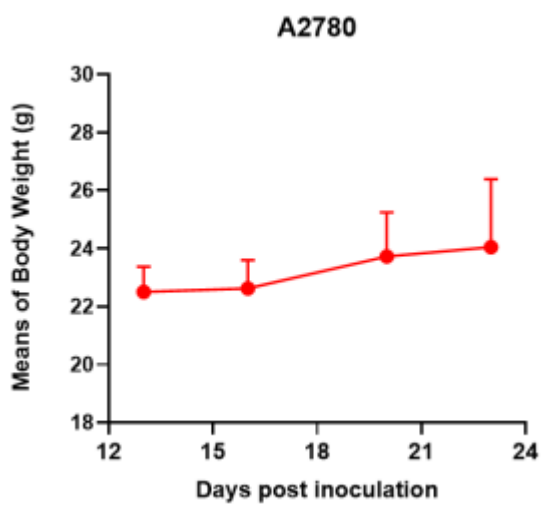


Fig1. Morphology of A2780 cell line.



A



B

Fig2. Analysis of Tumorigenesis in M-NSG mice (n=4) . a Tumor volume was measured by time. b Body weight was simultaneously checked.

\*Wild-type cell lines are not for sale, and only applied to construction of tumor bearing mice and in-vivo efficacy studies.