

# OE19

## Strain Information

Cat. NO.	NM-YH07
Cell Line	OE19
Strain State	Validation of tumorigenic capacity completed
Model Description	The cell line OE19, also known as JROECL19, was established in 1993 from an adenocarcinoma of gastric cardia/oesophageal gastric junction of a 72 year old male patient.
	*Literature published using this strain should indicate: OE19 cell line (Cat. NO. NM-YH07) was purchased from Shanghai Model Organisms Center, Inc..

## Validation Data

### I. Characterization of in vivo growth kinetics

The OE19 cells were subcutaneously inoculated into the M-NSG mice (NM-NSG-001) and huPBMC-(M-NSG) mice (NM-NSG-015).

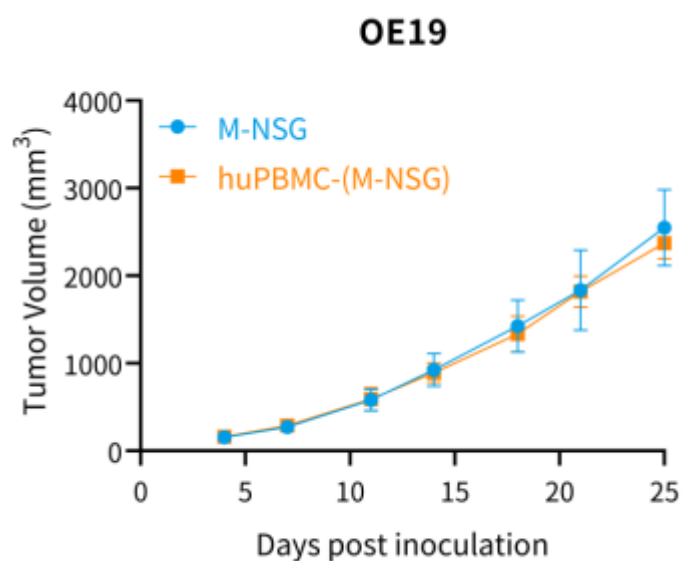


Figure 1. Tumor growth curve of OE19 xenograft model (n=6)

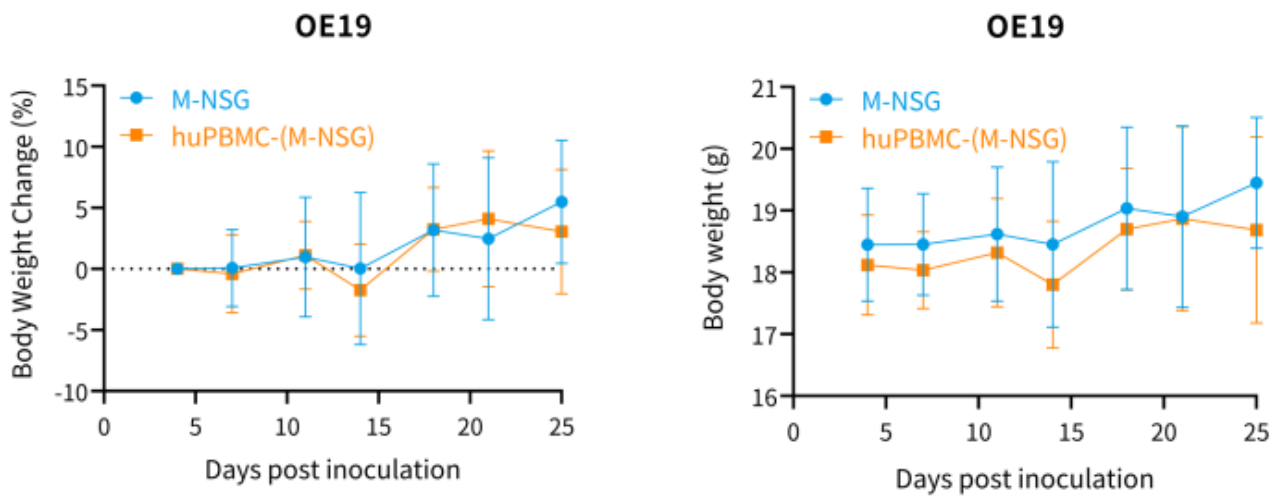


Figure 2. Body weight change of OE19 xenograft model (n=6)

\*Wild-

type cell lines are not for sale, and only applied to construction of tumor bearing mice and in-vivo efficacy studies.