

J82

Strain Information

Cat. NO.	NM-P02A
Cell Line	J82
Strain State	Validation of tumorigenic capacity completed
Model	The malignant human urothelial cell line (J82) was derived from bladder.
Description	*Literature published using this strain should indicate: J82 cell line (Cat. NO. NM-P02A) was purchased from Shanghai Model Organisms Center, Inc..

Validation Data

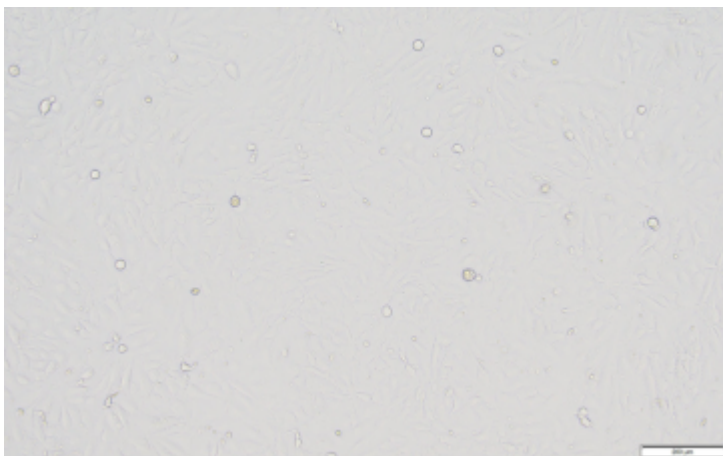
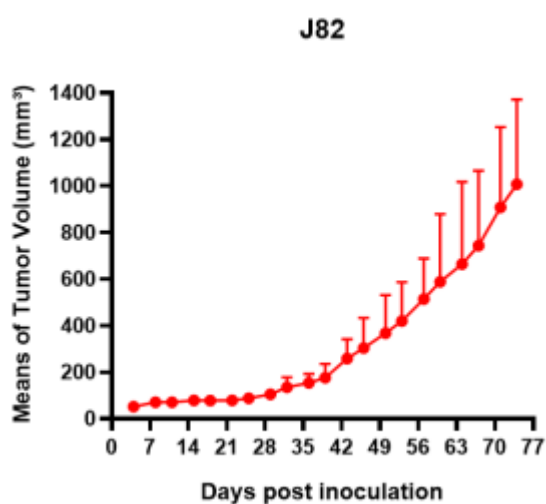
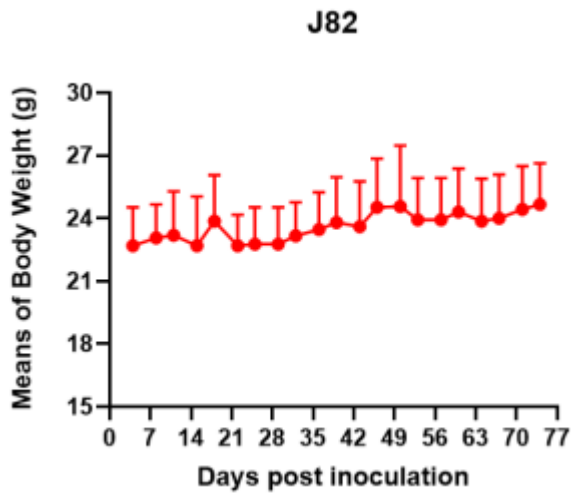


Fig1. Morphology of J82 cell line.



A



B

Fig2. Analysis of Tumorigenesis in M-NSG mice (n=4) . J82 cells were subcutaneously inoculated in M-NSG mice. a Tumor volume was measured by time. b Body weight was simultaneously checked.

*Wild-type cell lines are not for sale, and only applied to construction of tumor bearing mice and in-vivo efficacy studies.