

JC

Strain Information

Cat. NO.	NM-S23A
Cell Line	JC
Strain State	Validation of tumorigenic capacity completed
Model Description	JC cell line are epithelial-like cells that were isolated from the breasts of a mouse with adenocarcinoma.
	*Literature published using this strain should indicate: JC cell line (Cat. NO. NM-S23A) was purchased from Shanghai Model Organisms Center, Inc..

Validation Data

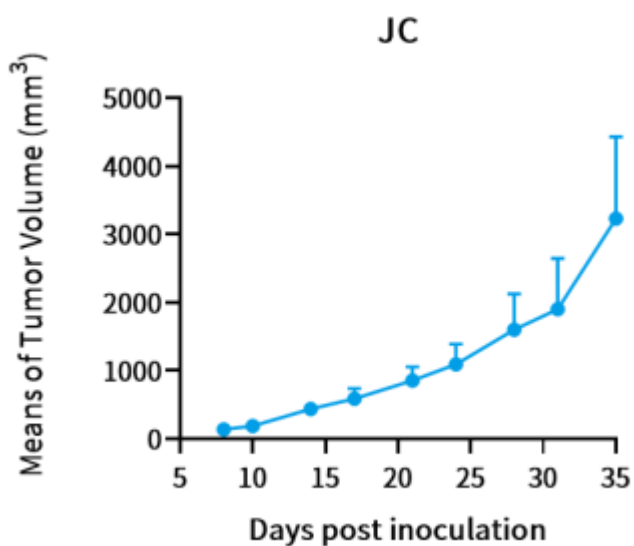


Fig.1 Tumor growth curve of JC allogeneic model in Balb/c nude mice

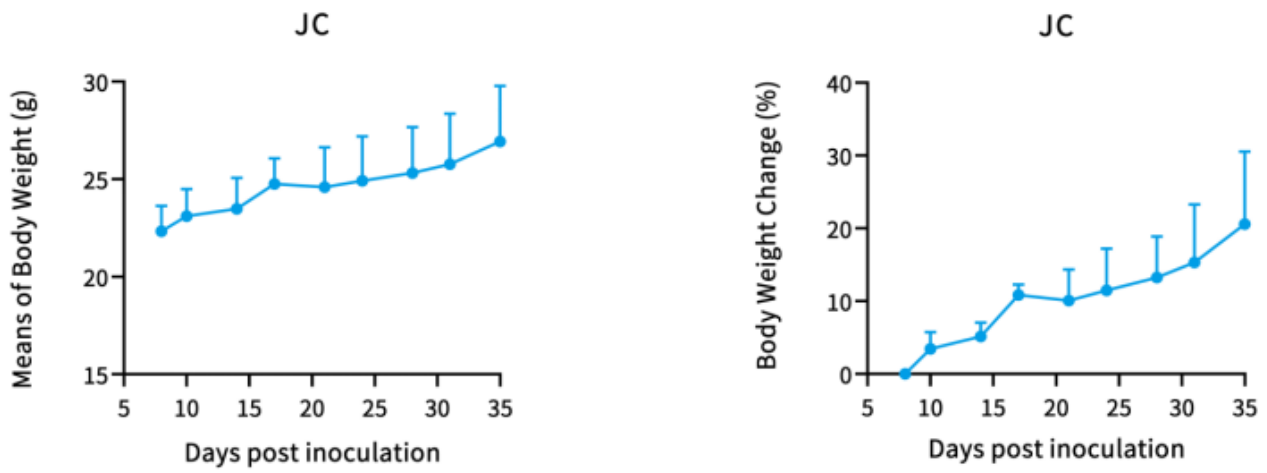


Fig.2 Body weight change of JC allogeneic model in Balb/c nude mice

***Wild-type cell lines are not for sale, and only applied to construction of tumor bearing mice and in-vivo efficacy studies.**