

# A20

## Strain Information

Cat. NO.	NM-S26A
Cell Line	A20
Strain State	Validation of tumorigenic capacity
Model	Mouse B cell lymphoma cell line
Description	*Literature published using this strain should indicate: A20 cell line (Cat. NO. NM-S26A) was purchased from Shanghai Model Organisms Center, Inc..

## Validation Data

The A20 (A-20) is a BALB/c B cell lymphoma line derived from a spontaneous reticulum cell neoplasm found in an old BALB/cAnN mouse.

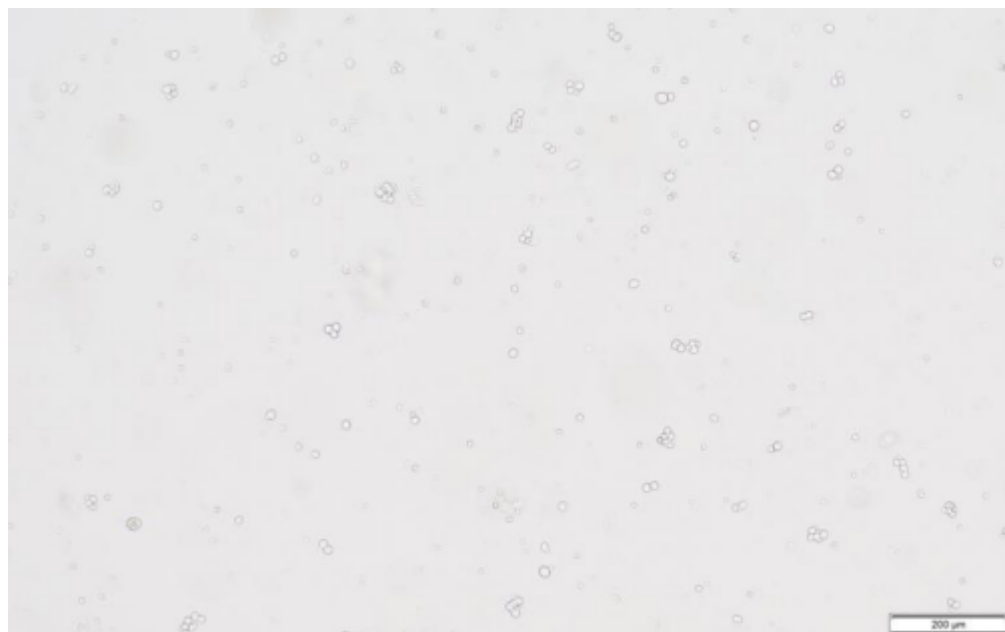


Figure 1. Morphology of A20 cell line

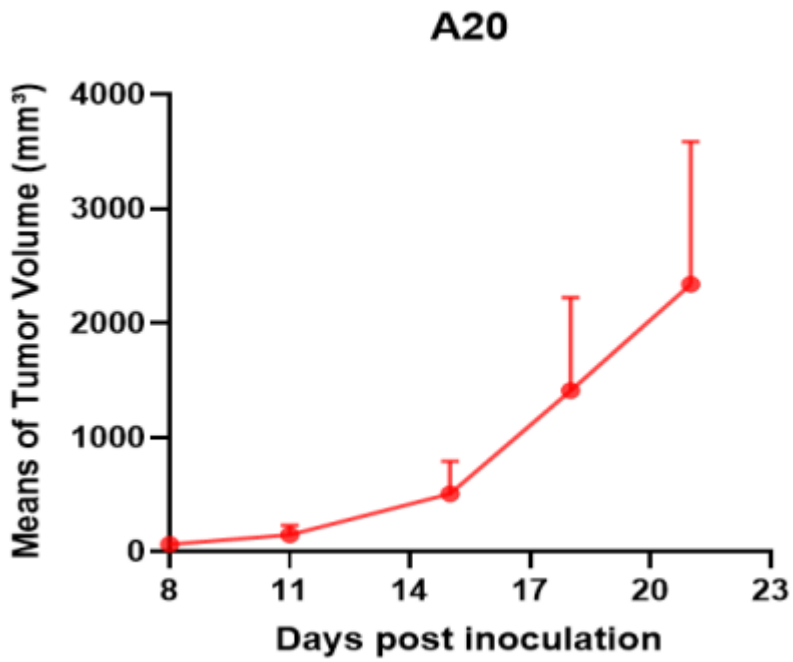


Figure 2. Tumor growth curve of A20 allogeneic model (n=5)

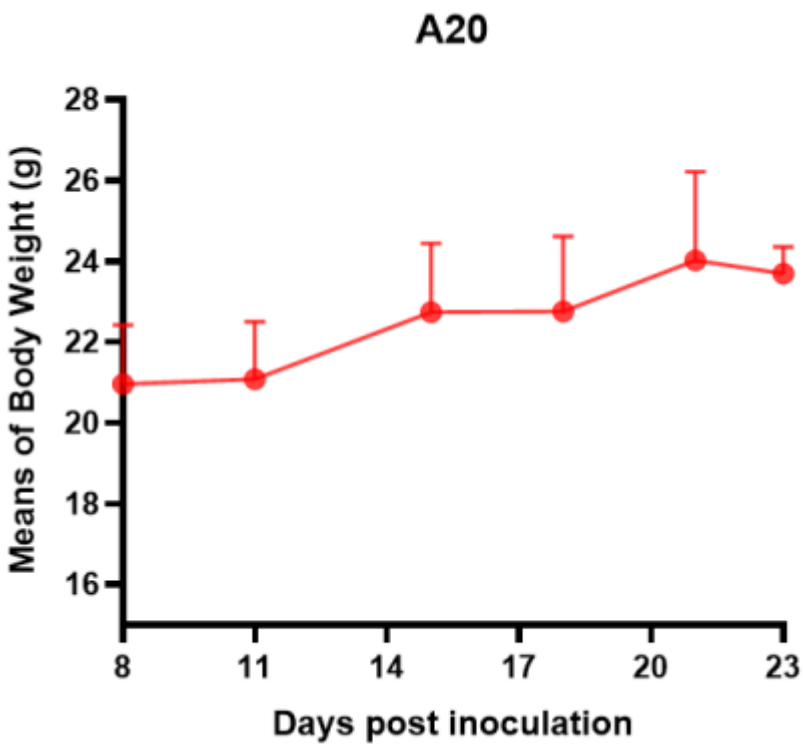


Figure 3. Body weight change of A20 allogeneic model (n=5)

\*Wild-type cell lines are not for sale, and only applied to construction of tumor bearing mice and in-vivo efficacy studies.