

A375

Strain Information

Cat. NO. NM-KH06

Cell Line A375

Strain State Validation of tumorigenic capacity completed

Model Description A375 is a cell line exhibiting epithelial morphology that was isolated from the skin of a 54-year-old, female patient with malignant melanoma.

*Literature published using this strain should indicate: A375 cell line (Cat. NO. NM-KH06) was purchased from Shanghai Model Organisms Center, Inc..

Validation Data

The A-375 (A375) cell line is human cell derived from the skin of a female patient with malignant melanoma.

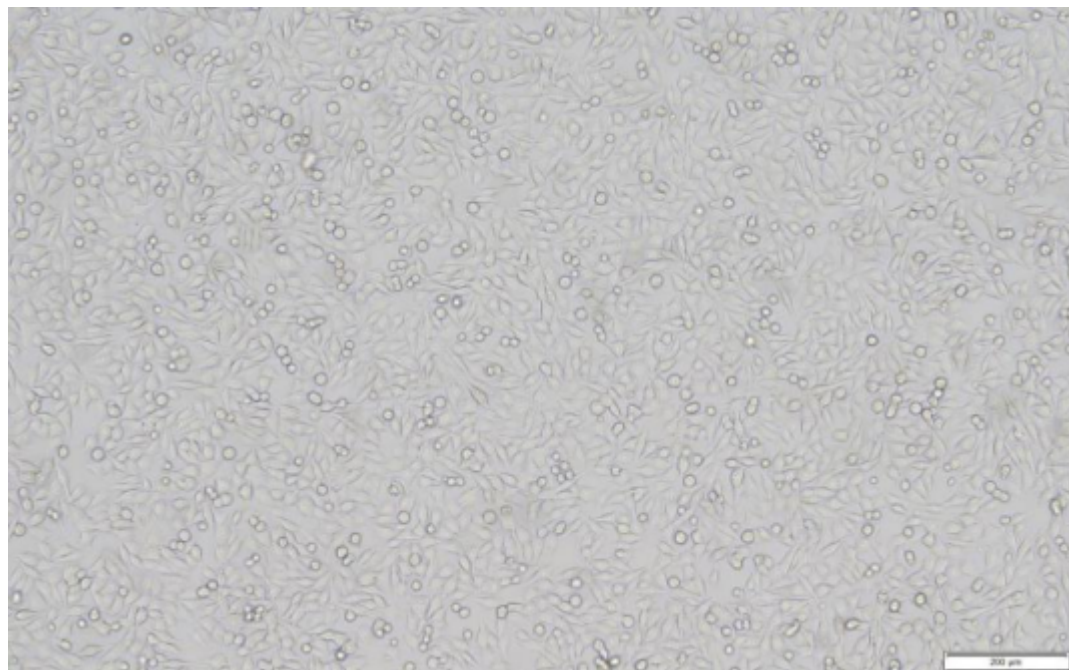


Figure 1. Morphology of A-375 cell line

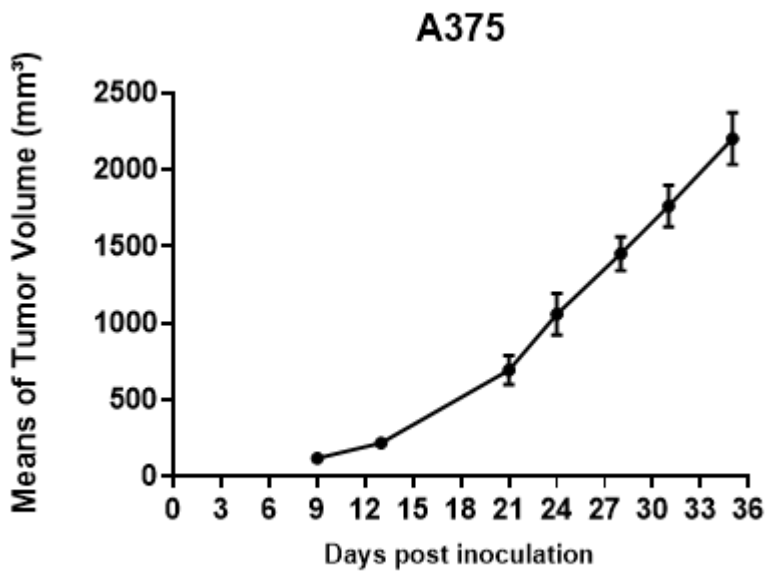


Figure 2. Tumor growth curve of A-375 xenograft model in M-NSG mice (n=6)

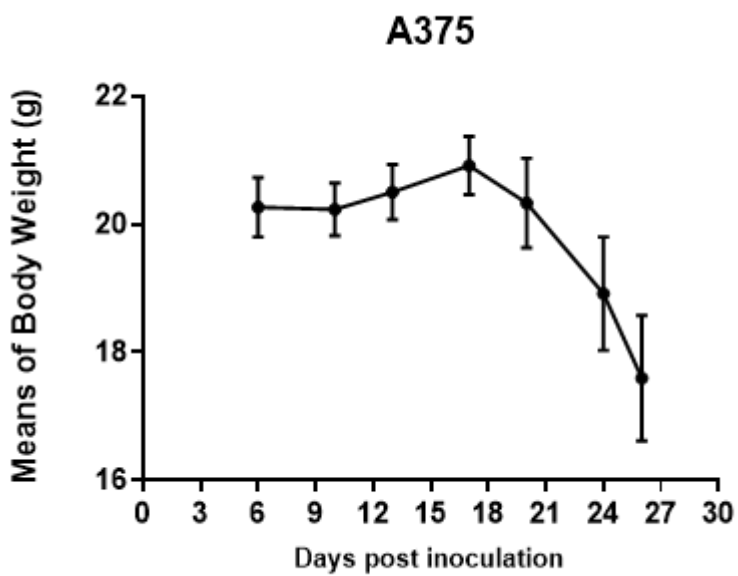


Figure 3. Body weight change of A-375 xenograft model (n=6)

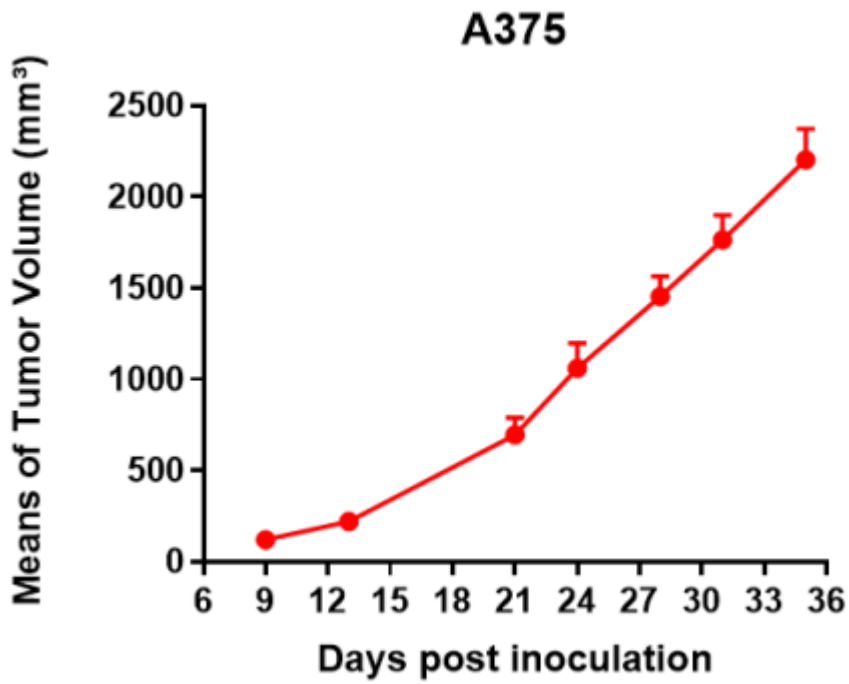


Figure 4. Tumor growth curve of A-375 xenograft model in huPBMC-(M-NSG) mice. (n=3)

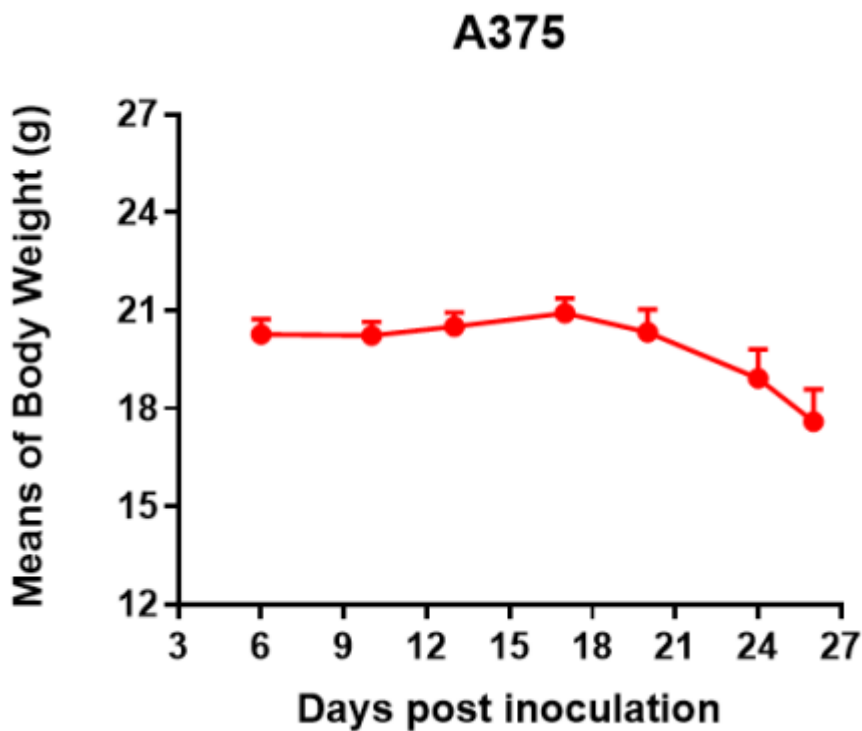


Figure 5. Body weight change of A-375 xenograft model in huPBMC-(M-NSG) mice (n=3)

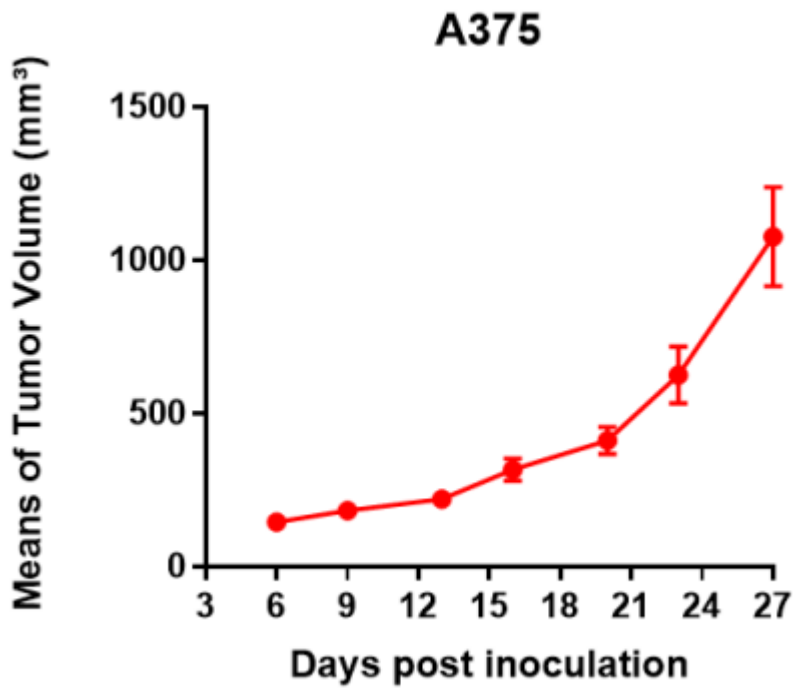


Figure 6. Tumor growth curve of A-375 xenograft model in hHSC-(M-NSG) mice. (n=7)

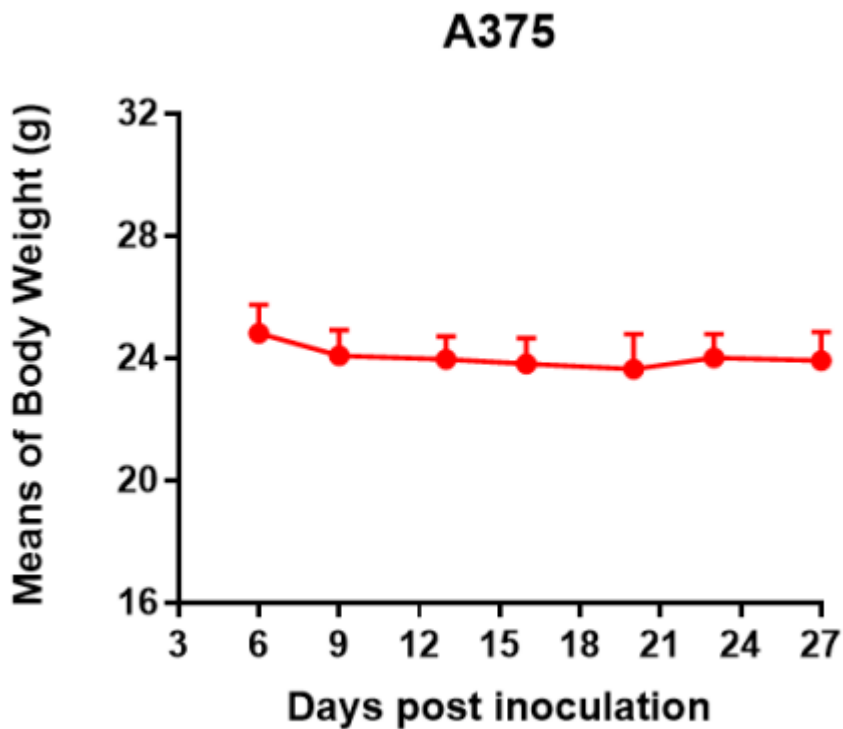


Figure 8. Body weight change of A-375 xenograft model in hHSC-(M-NSG) mice. (n=7)

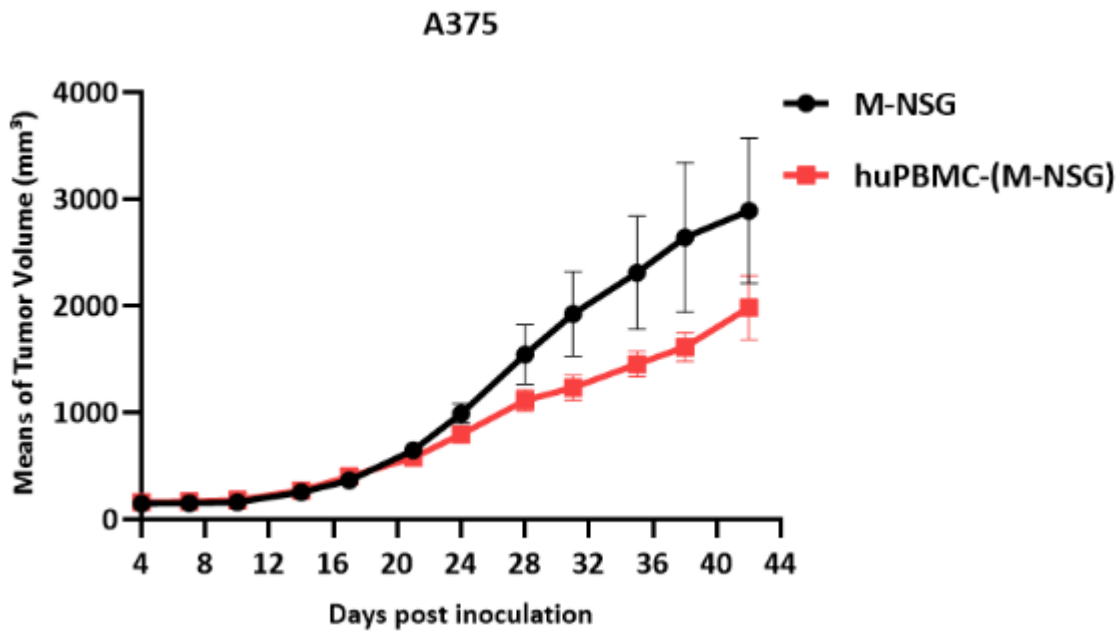


Figure 9. Tumor growth curve of A375 xenograft model (n=4 ~ 5)

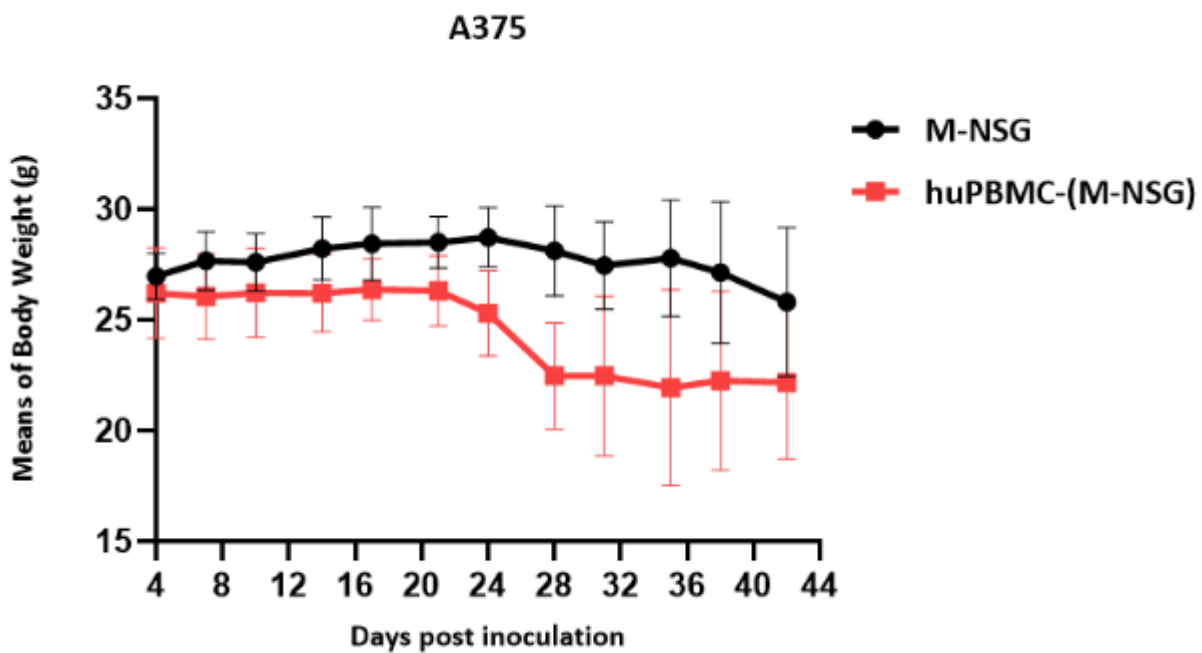


Figure 10. Body weight change of A375 xenograft model (n=4 ~ 5)

*Wild-type cell lines are not for sale, and only applied to construction of tumor bearing mice and in-vivo efficacy studies.