

# PANC-1

## Strain Information

Cat. NO. NM-YX01A

Cell Line PANC-1

Strain State Validation of tumorigenic capacity completed

Model Description Established from a pancreatic carcinoma of ductal origin from a 56-year-old Caucasian male.

\*Literature published using this strain should indicate: PANC-1 cell line (Cat. NO. NM-YX01A) was purchased from Shanghai Model Organisms Center, Inc..

## Validation Data

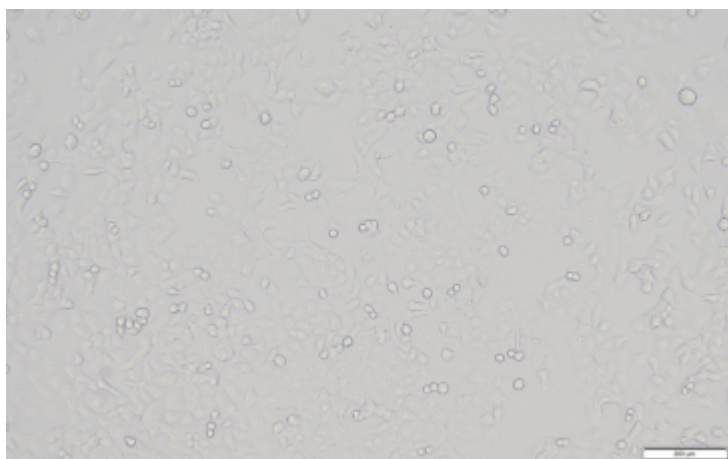
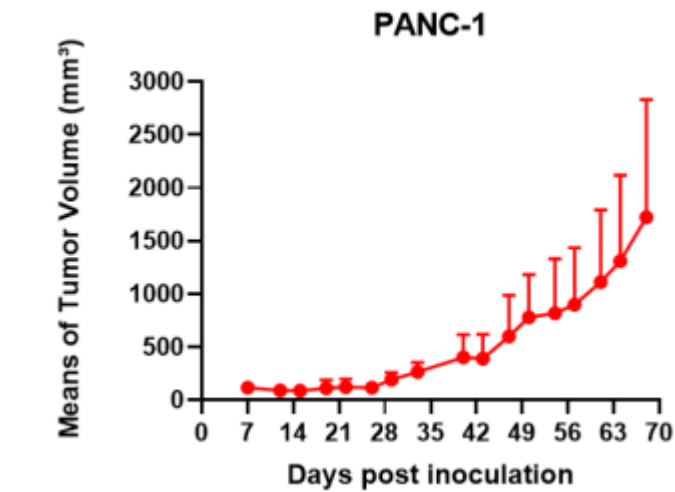
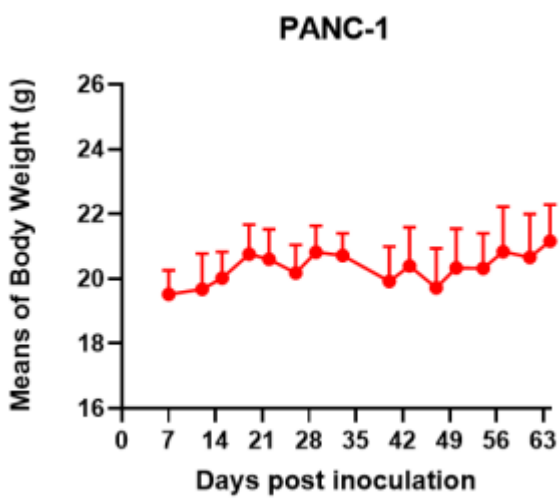


Fig1. Morphology of PANC-1 cell line.



A



B

Fig2. Analysis of Tumorigenesis in M-NSG mice (n=5) . A Tumor volume was measured by time. B Body weight was simultaneously checked.

\*Wild-type cell lines are not for sale, and only applied to construction of tumor bearing mice and in-vivo efficacy studies.