

Sox10-2A-Cre

Nomenclature	C57BL/6Smoc- <i>Sox10</i> ^{em(2A-Cre)Smoc}
Cat. NO.	NM-KI-220066
Strain State	Repository Live

Gene Summary

Gene Symbol Sox10	Synonyms	gt; Dom; Sox21
	NCBI ID	20665
	MGI ID	98358
	Ensembl ID	ENSMUSG00000033006
	Human Ortholog	SOX10

Model Description

2A-Cre expression cassette was knocked into the Sox10 gene stop codon site.

*Literature published using this strain should indicate: Sox10-2A-Cre mice (Cat. NO. NM-KI-220066) were purchased from Shanghai Model Organisms Center, Inc..

Validation Data

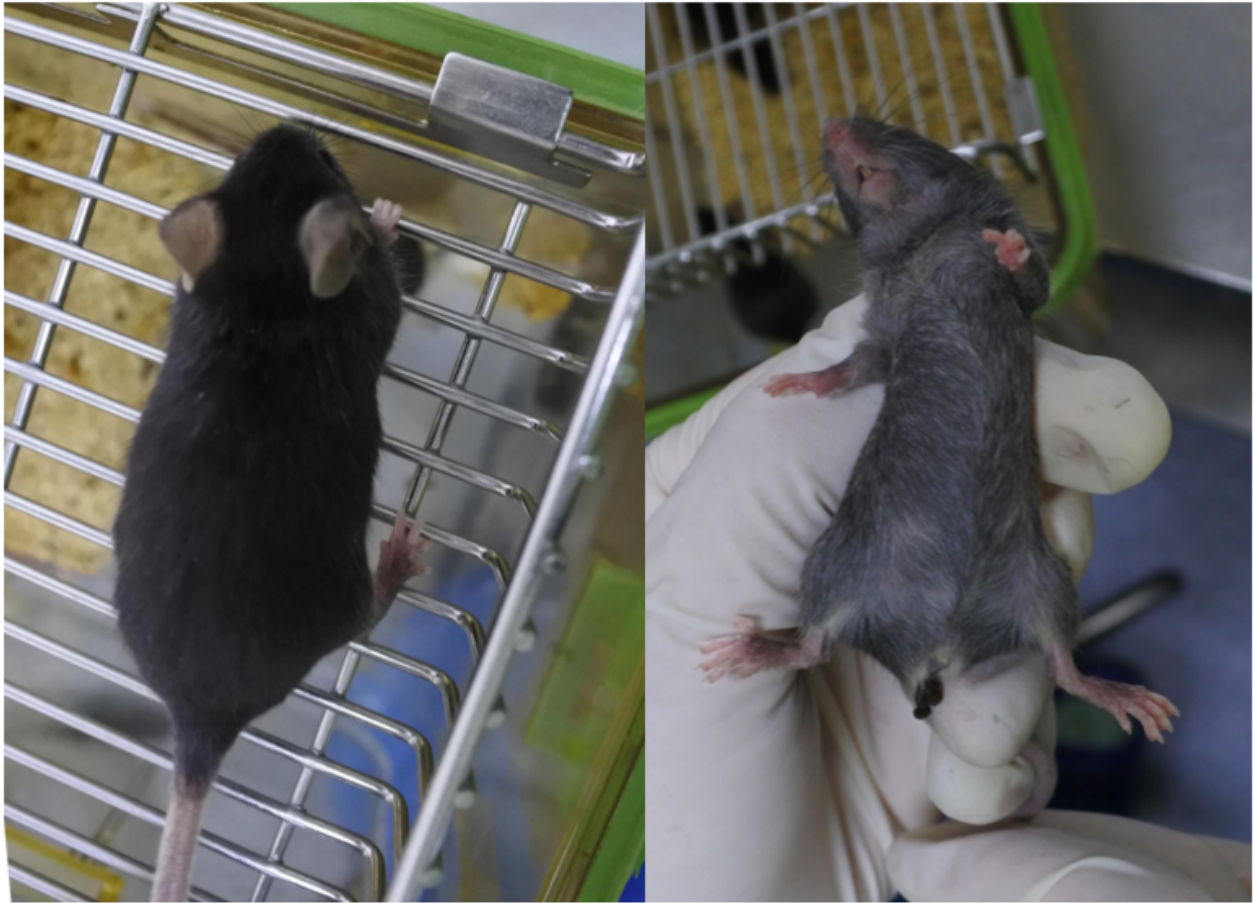
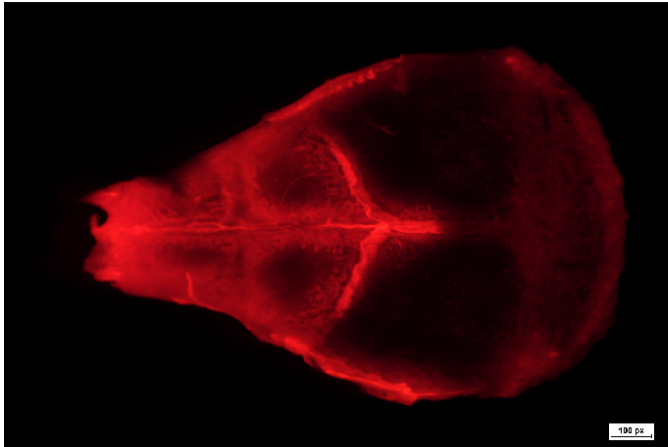


Fig 1. Photographs of the back and abdomen of Sox10Cre/+; Rosa26tdTomato/+ mice.

tdTomato



Bright field



Fig 2. Cre-mediated recombination in occipital skull of Sox10Cre/+; Rosa26tdTomato/+ mice.

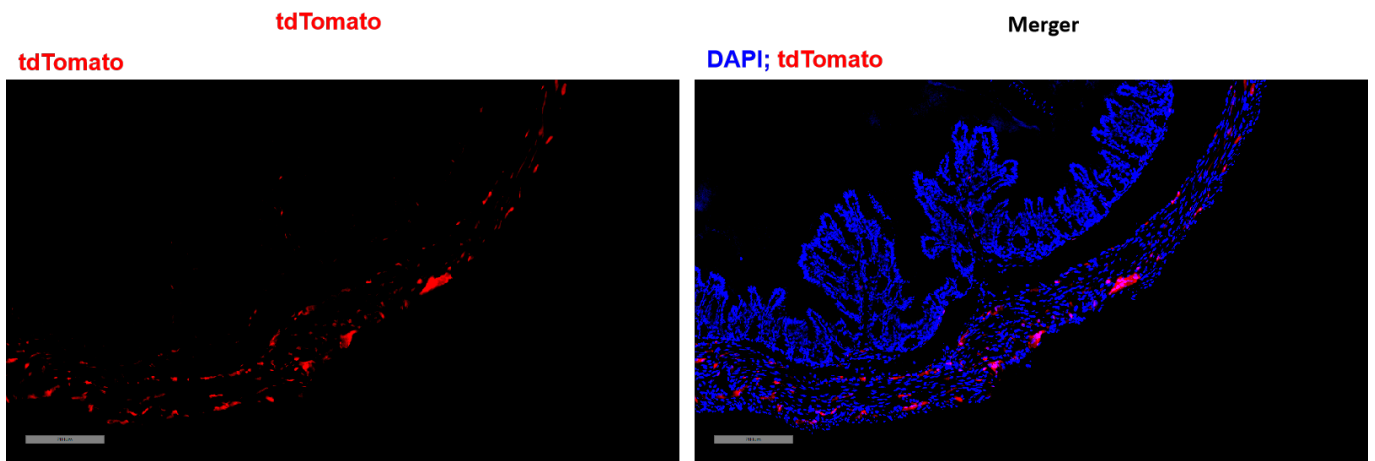


Fig 3. Cre-mediated recombination in intestines of Sox10^{Cre/+}; Rosa26^{tdTomato/+} mice.

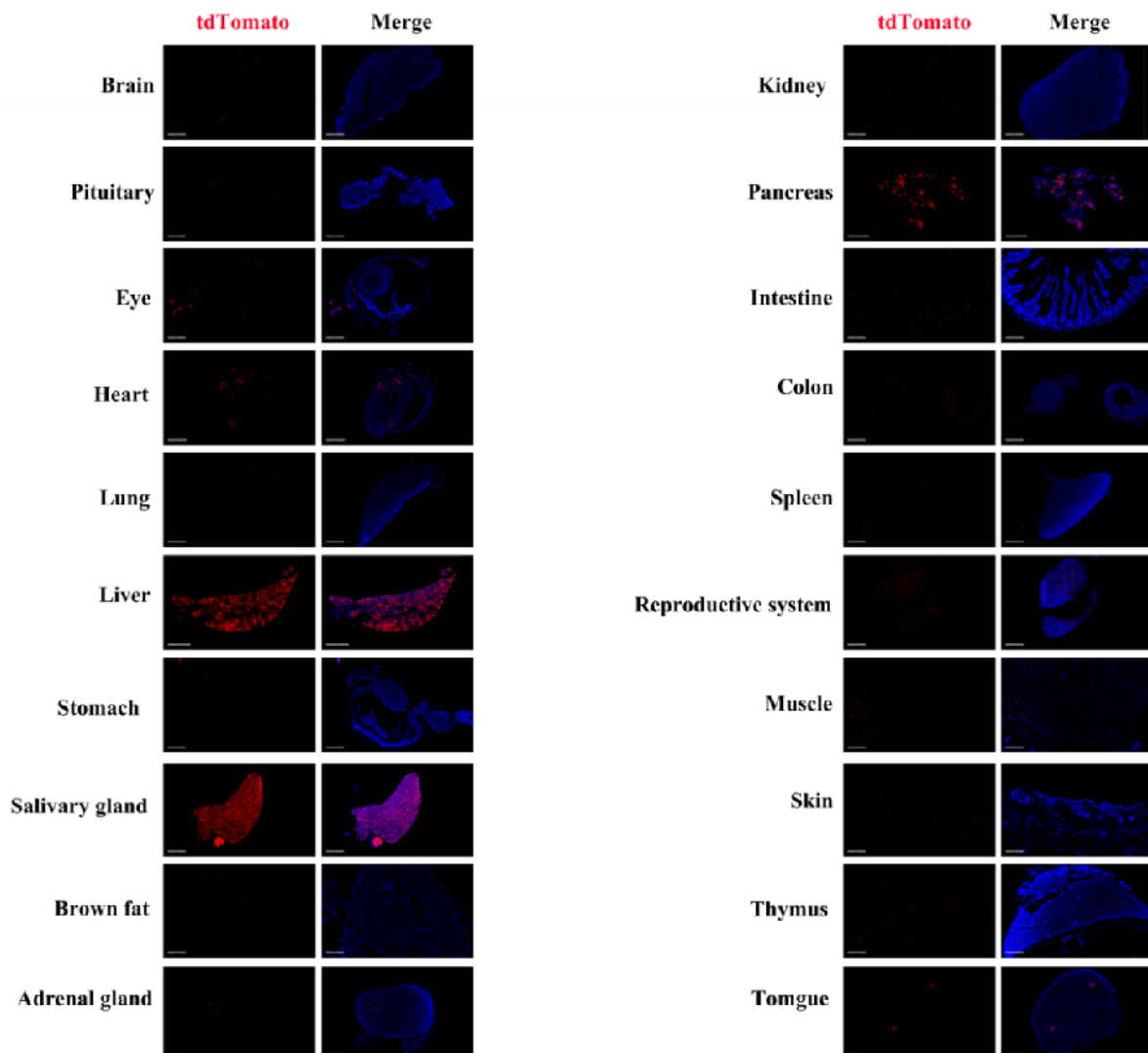


Fig 4. Detection of tdTomato(red) in various tissues of Sox10^{Cre/+};

Rosa26tdTomato/+ mice. Expression tissues include: brain, pituitary gland, eyeball, heart, lung, liver, stomach, salivary gland, kidney, pancreas, small intestine, colon, testis, epididymis, thymus and tongue. A few cells expressed in brown fat, adrenal gland, spleen, muscle, skin. (8-week old, male) (For more detailed information please contact our technical advisor.)
