

# Cd8a-2A-tdTomato-2A-Luc

<b>Nomenclature</b>	C57BL/6Smoc- <i>Cd8a</i> <sup>em(T2A-tdTomato-P2A-Luciferase)1Smoc</sup>
<b>Cat. NO.</b>	NM-KI-225025
<b>Strain State</b>	Sperm cryopreservation

## Gene Summary

<b>Gene Symbol</b> Cd8a	<b>Synonyms</b>	Ly-2; Ly-B; Ly-35; Lyt-2; BB154331
	<b>NCBI ID</b>	<a href="#">12525</a>
	<b>MGI ID</b>	<a href="#">88346</a>
	<b>Ensembl ID</b>	<a href="#">ENSMUSG00000053977</a>
	<b>Human Ortholog</b>	CD8A

## Model Description

T2A-tdTomato-P2A-Luciferase expression cassette was knocked into the Cd8a gene .

**Research Application:** Reporter mouse

\*Literature published using this strain should indicate: Cd8a-2A-tdTomato-2A-Luc mice (Cat. NO. NM-KI-225025) were purchased from Shanghai Model Organisms Center, Inc..

## Validation Data

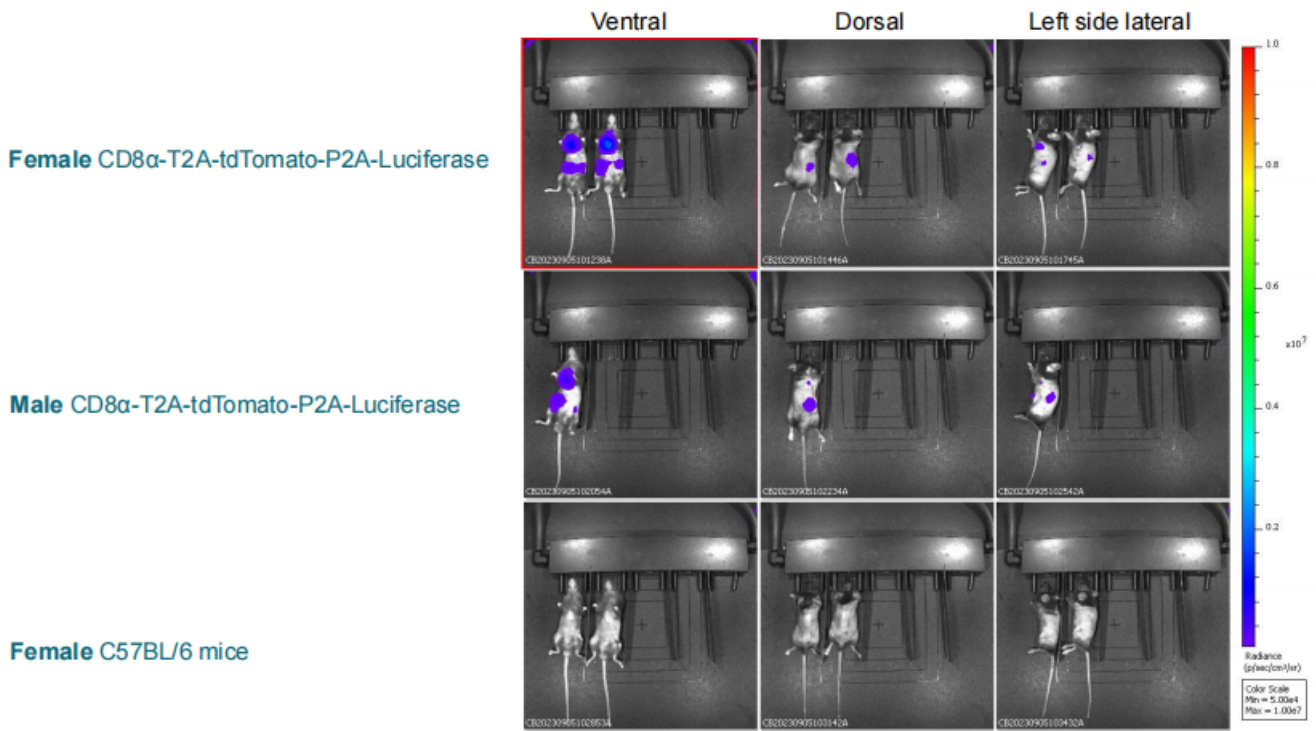


Fig.1 IVIS automatic exposure. According to the imaging process, the mice were injected with D-Luciferin, and the abdomen, back, and flanks were imaged in vivo.

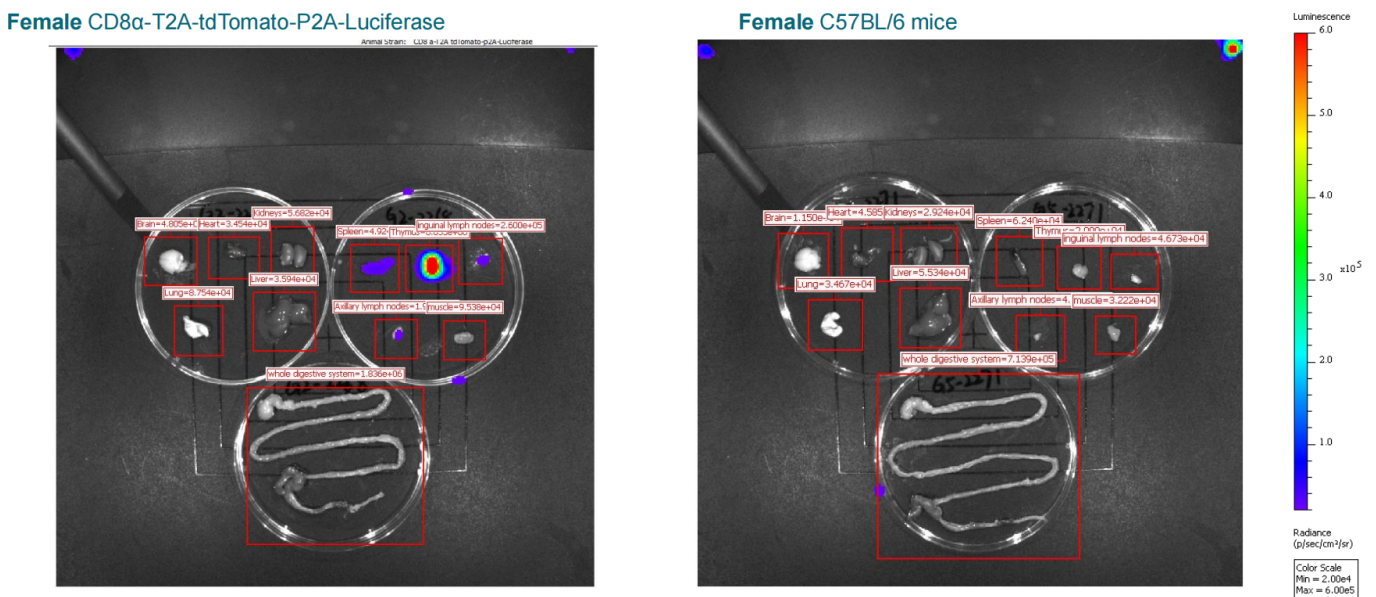


Fig.2 IVIS automatic exposure: ex vivo. According to the imaging process, D-Luciferin was injected, and the mouse brain, heart, lung, kidney, liver, spleen, thymus, inguinal lymph node, axillary lymph node (Axial LN), muscle, and the entire digestive system (stomach to colon) were taken for imaging.

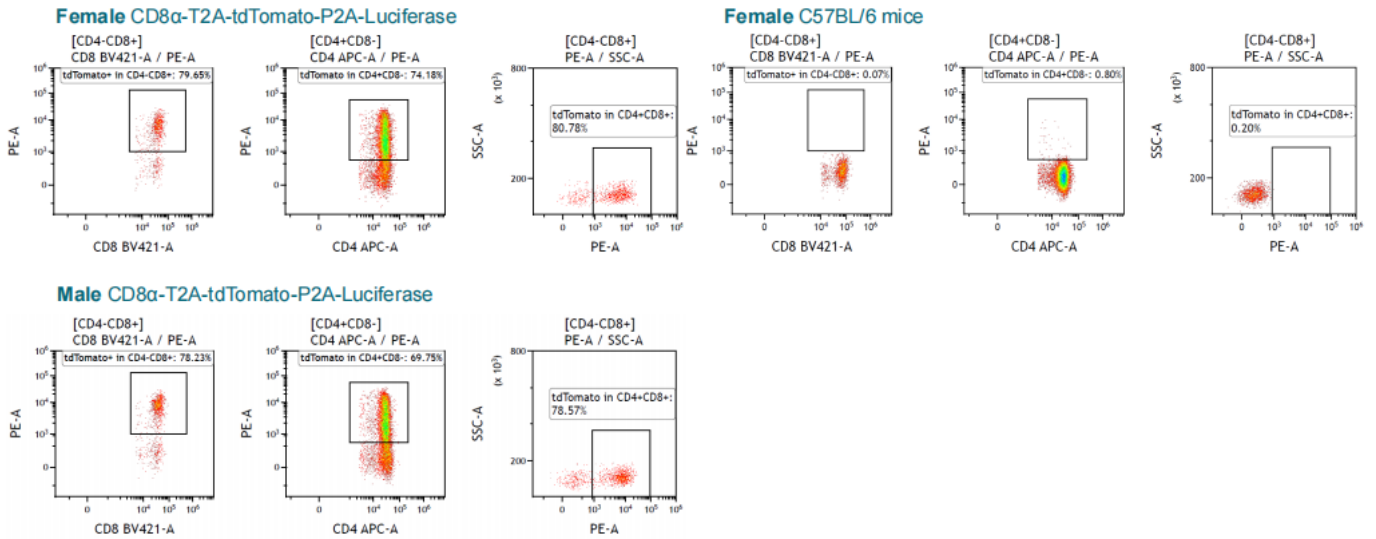


Fig.3 Detection of tdTomato in mice thymus by FACS.

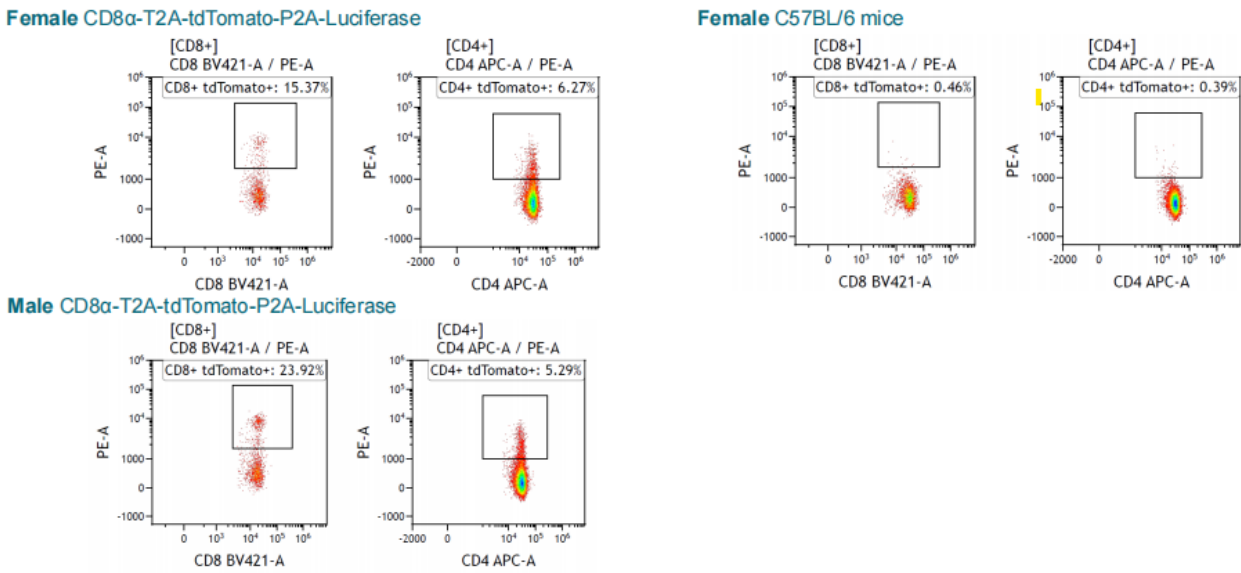


Fig.4 Detection of tdTomato in mice axillary lymph by FACS.

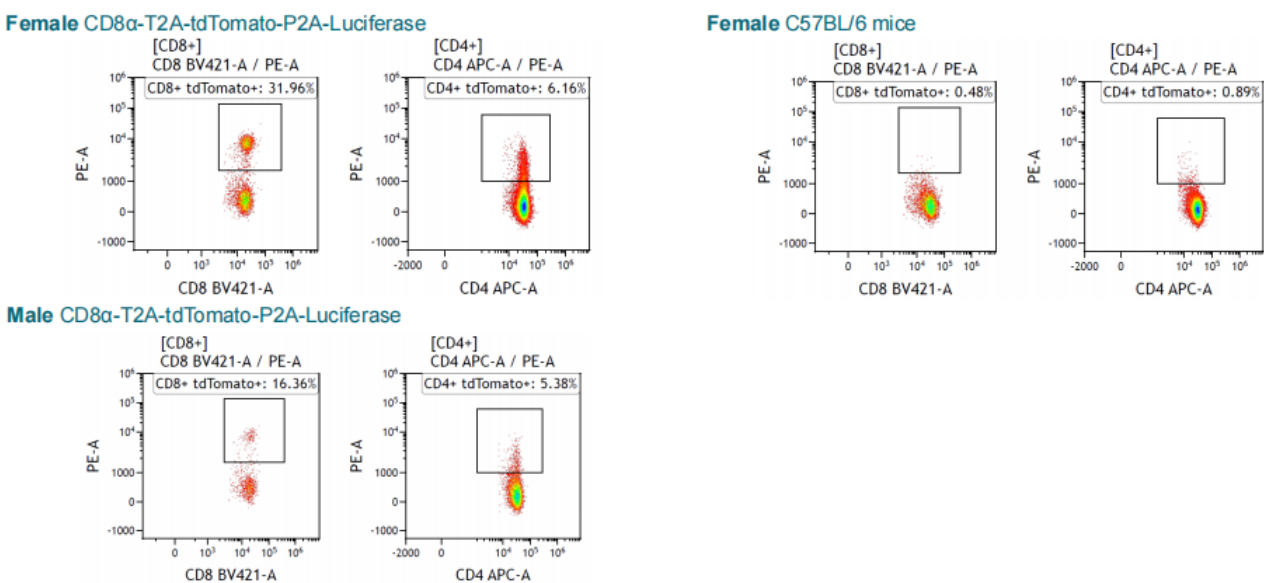
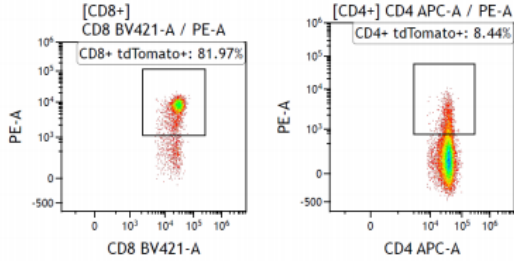
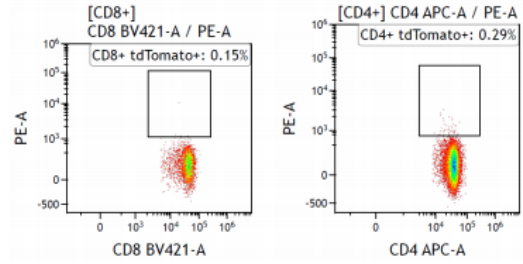


Fig.5 Detection of tdTomato in mice inguinal lymph by FACS.

**Female CD8 $\alpha$ -T2A-tdTomato-P2A-Luciferase**



**Female C57BL/6 mice**



**Male CD8 $\alpha$ -T2A-tdTomato-P2A-Luciferase**

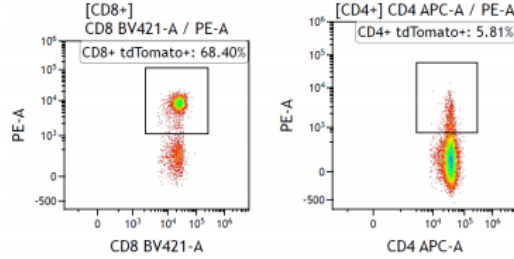
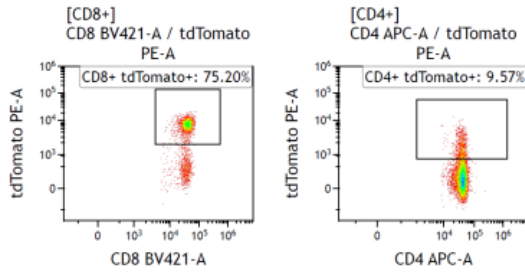
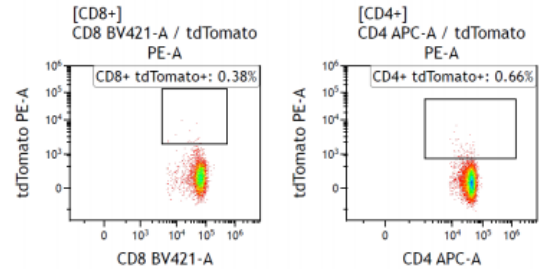


Fig.6 Detection of tdTomato in mice spleen by FACS.

**Female CD8 $\alpha$ -T2A-tdTomato-P2A-Luciferase**



**Female C57BL/6 mice**



**Male CD8 $\alpha$ -T2A-tdTomato-P2A-Luciferase**

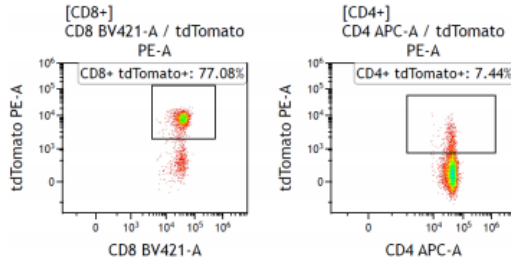


Fig.7 Detection of tdTomato in mice PB by FACS.

*\*The validation data above were completed in cooperation with Crownbio.*