

# Col1a1-IRES-CreERT2

<b>Nomenclature</b>	C57BL/6Smoc- <i>Col1a1</i> <sup>em(IRES-CreERT2)1Smoc</sup>
<b>Cat. NO.</b>	NM-KI-225031
<b>Strain State</b>	Repository Live

## Gene Summary

<b>Gene Symbol</b> Col1a1	<b>Synonyms</b>	Cola1; Mov13; Cola-1; Mov-13; Col1a-1
	<b>NCBI ID</b>	<a href="#">12842</a>
	<b>MGI ID</b>	<a href="#">88467</a>
	<b>Ensembl ID</b>	<a href="#">ENSMUSG00000001506</a>
	<b>Human Ortholog</b>	COL1A1

## Model Description

IRES-CreERT2 expression cassette was knocked into the Col1a1 gene .

**Research Application:** Cre mouse,osteoblast

\*Literature published using this strain should indicate: Col1a1-IRES-CreERT2 mice (Cat. NO. NM-KI-225031) were purchased from Shanghai Model Organisms Center, Inc..

## Validation Data

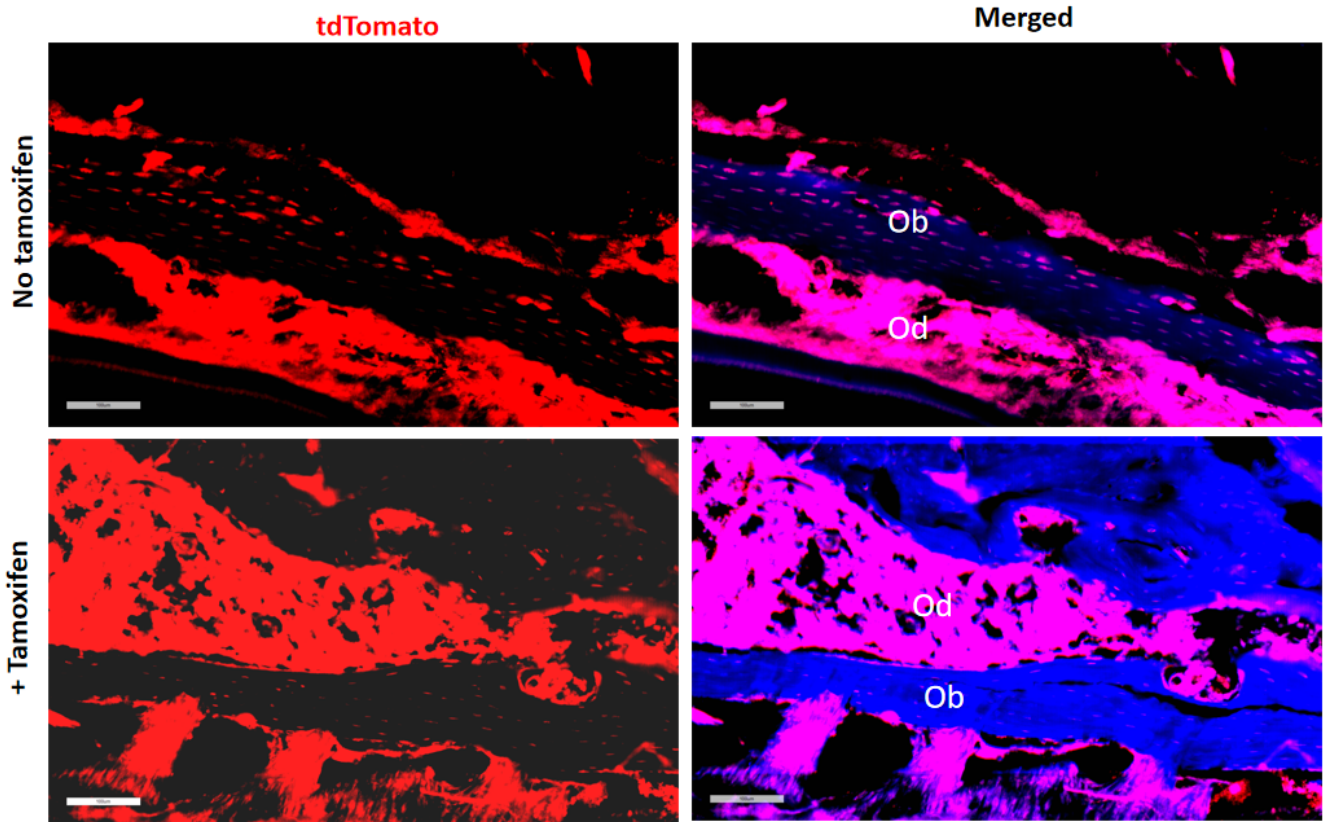


Fig1. Cre mediated recombination in thyroid of  $Col1a1^{CreERT2/+};Rosa26^{tdTomato/+}$  mouse.

Ob, osteoblasts; Od, odontoblasts

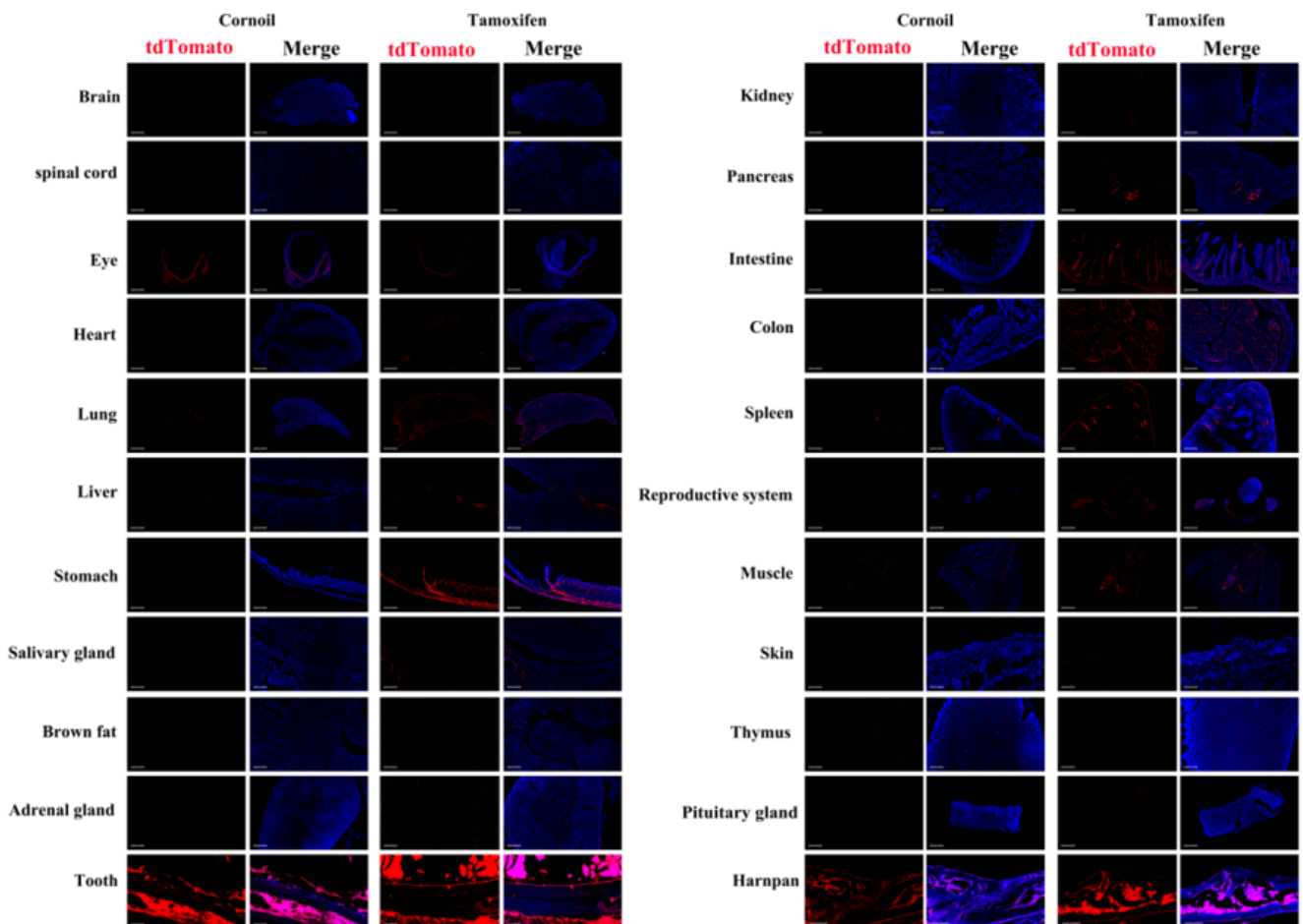


Fig2. Detection of tdTomato(red) in various tissues of Col1a1<sup>CreERT2/+</sup>;Rosa26<sup>tdTomato/+</sup> mouse. Expression tissues include: lung, stomach, teeth, pancreas, small intestine, colon, spleen, epididymis, skin, pituitary gland and skull. A few cells expressed in brain, eyeball, heart, liver, salivary gland, adrenal gland, kidney, muscle, thymus. Tissues that unexpressed include spinal cord, brown fat. The control group is expressed before induction. (39-days old, male) (For more detailed information please contact our technical advisor.)

---