

# Cd2-IRES-Cre

<b>Nomenclature</b>	C57BL/6Smoc- <i>Cd2</i> <sup>em(IRES-Cre)1Smoc</sup>
<b>Cat. NO.</b>	NM-KI-225032
<b>Strain State</b>	Sperm cryopreservation

## Gene Summary

<b>Gene Symbol</b> Cd2	<b>Synonyms</b>	Ly37; LFA-2; Ly-37
	<b>NCBI ID</b>	<a href="#">12481</a>
	<b>MGI ID</b>	<a href="#">88320</a>
	<b>Ensembl ID</b>	<a href="#">ENSMUSG00000027863</a>
	<b>Human Ortholog</b>	CD2

## Model Description

IRES-Cre expression cassette was knocked into the Cd2 gene .

**Research Application:** Cre mouse, B cell

\*Literature published using this strain should indicate: Cd2-IRES-Cre mice (Cat. NO. NM-KI-225032) were purchased from Shanghai Model Organisms Center, Inc..

## Validation Data

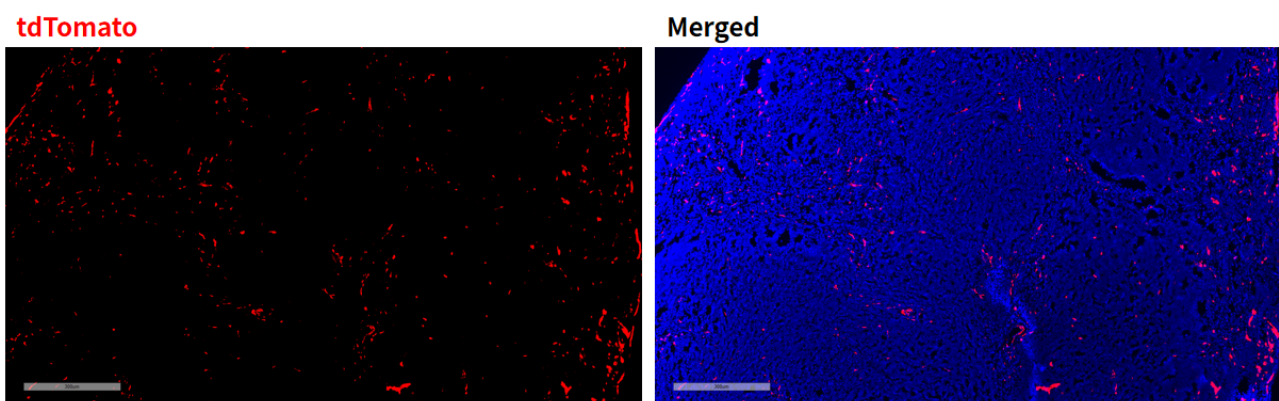


Fig1. Cre mediated recombination in spleen of Cd2Cre/+;Rosa26tdTomato/+ mouse.

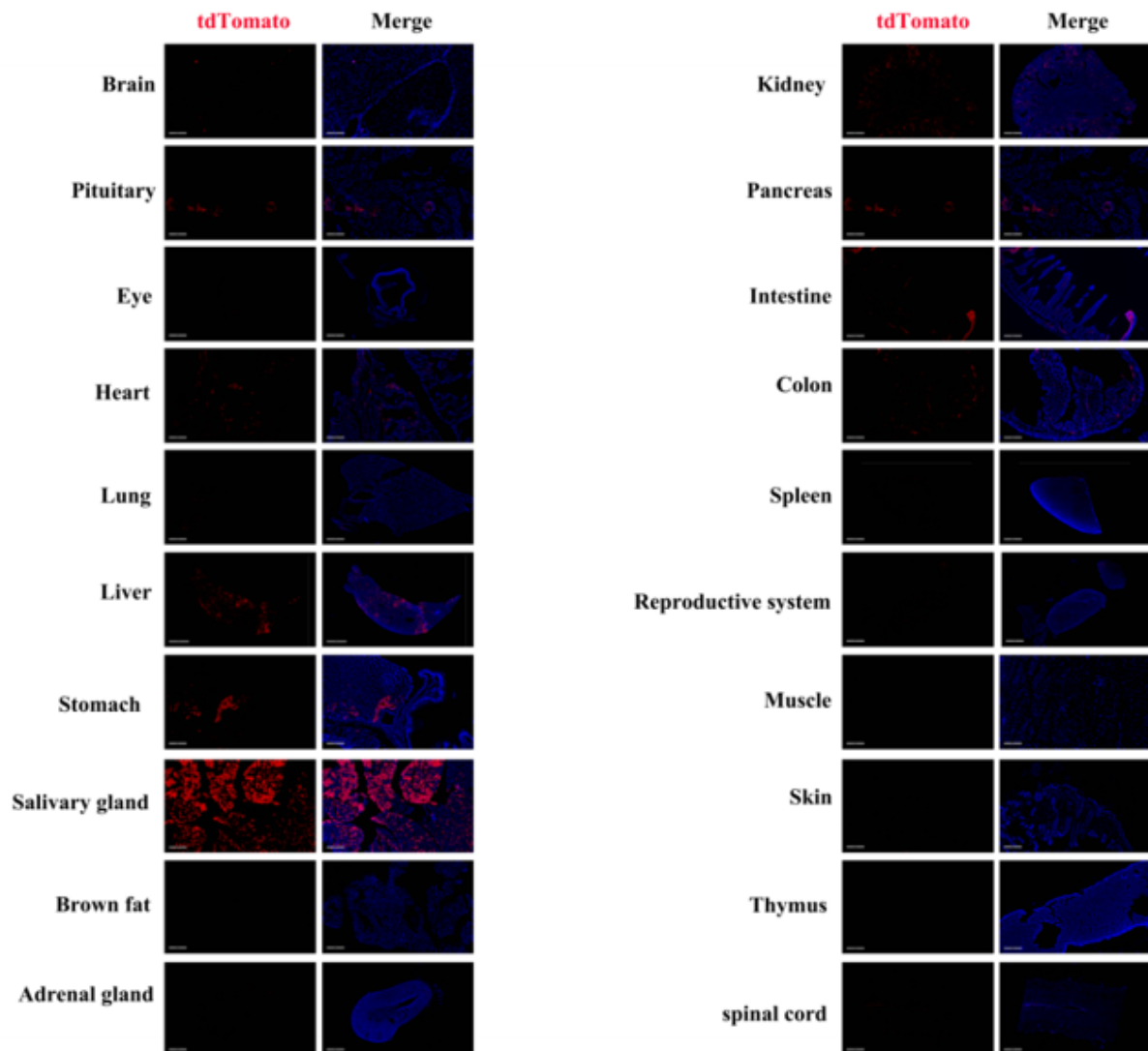


Fig2. Detection of tdTomato(red) in various tissues of Cd2cre/+;Rosa26tdTomato/+ mouse. Expression tissues include: heart, liver, salivary glands, kidney, spleen, small intestine, colon, testicles. Tissues that unexpressed include brown fat, adrenal gland, muscle. (5-month old, male) (For more detailed information please contact our technical advisor.)