

Cspg4-CreERT2-2A

Nomenclature	C57BL/6Smoc- <i>Cspg4</i> ^{em(CreERT2-P2A)1Smoc}
Cat. NO.	NM-KI-225033
Strain State	Repository Live

Gene Summary

Gene Symbol Cspg4	Synonyms	AN2; NG2; 4732461B14Rik
	NCBI ID	121021
	MGI ID	2153093
	Ensembl ID	ENSMUSG00000032911
	Human Ortholog	CSPG4

Model Description

CreERT2-P2A expression cassette was knocked into the Cspg4 gene .

Research Application: Cre mouse, Perivascular cell or glial cell

*Literature published using this strain should indicate: Cspg4-CreERT2-2A mice (Cat. NO. NM-KI-225033) were purchased from Shanghai Model Organisms Center, Inc..

Validation Data

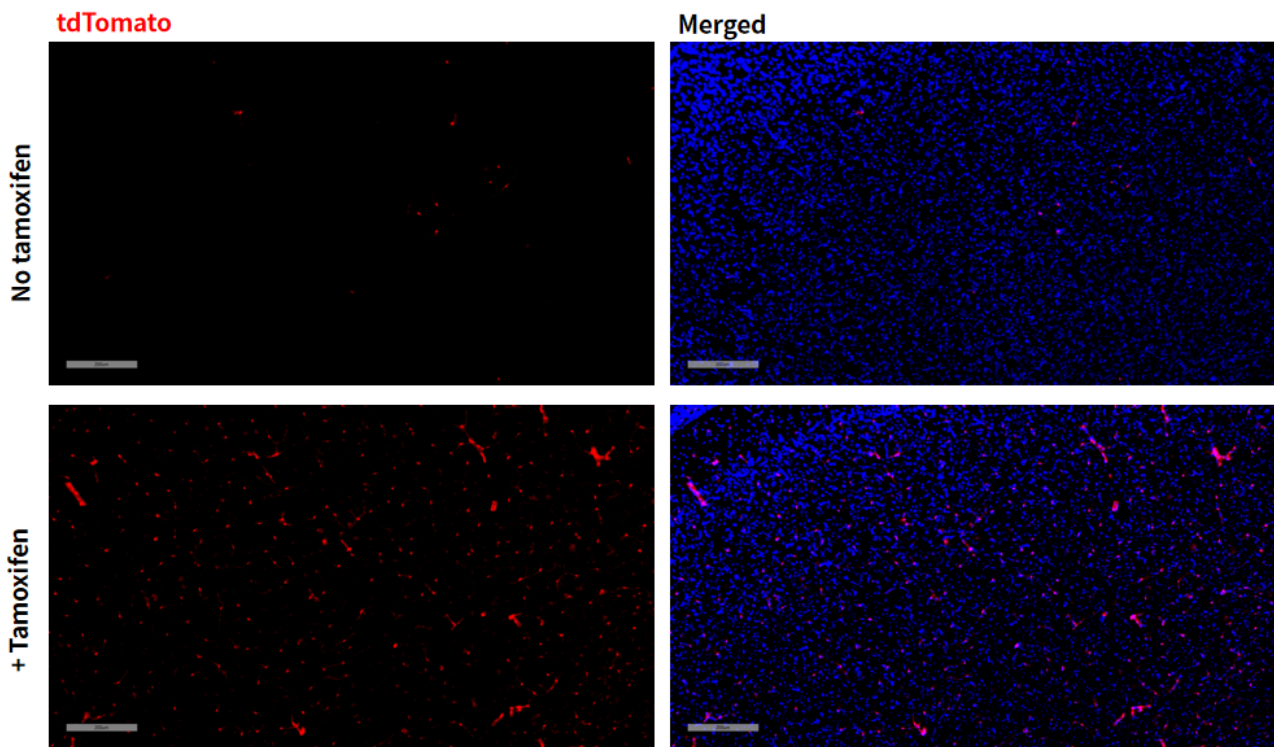


Fig 1. Cre-mediated recombination in Cortex of *Cspg4CreERT2/+; Rosa26tdTomato/+* mice.

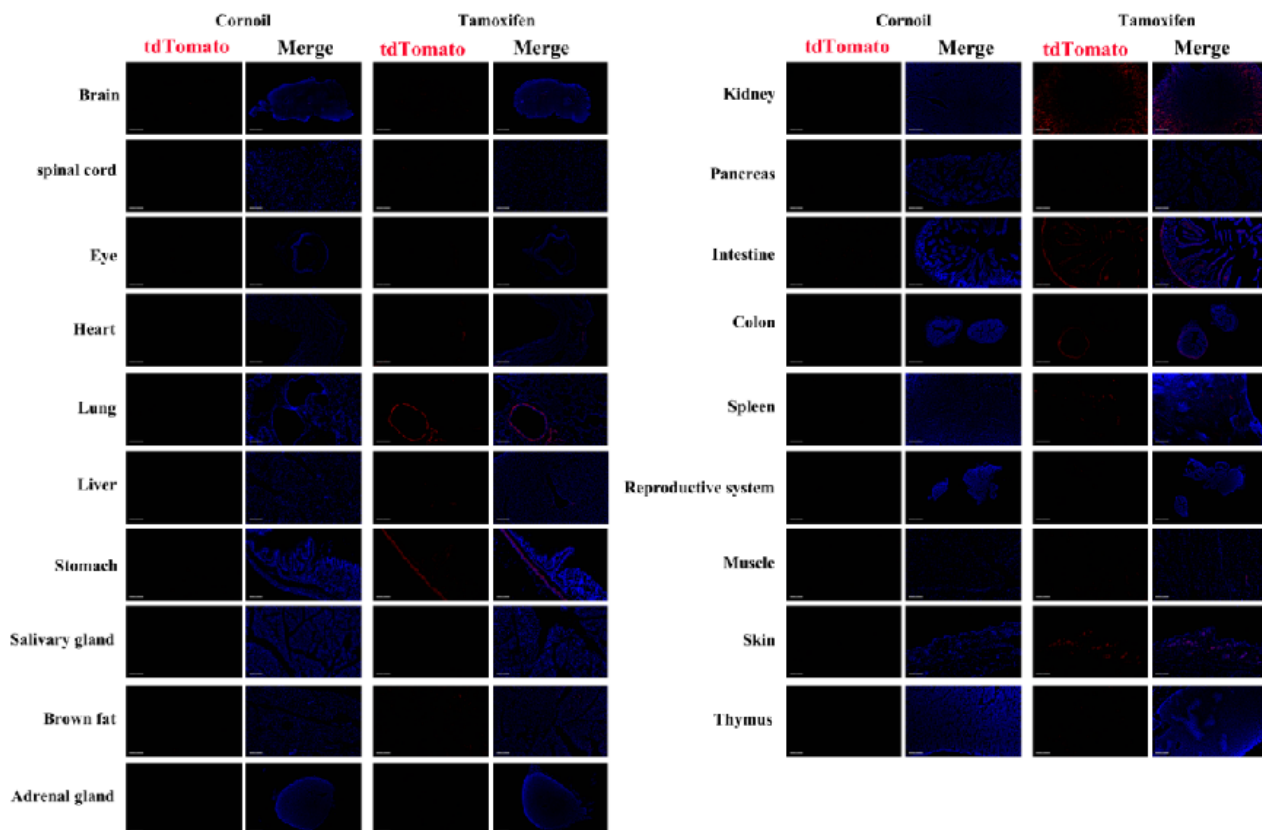


Fig 2. Detection of tdTomato (red) in various tissues of *Cspg4CreERT2/+; Rosa26tdTomato/+* mice. Expression tissues include: brain, spinal cord, cornea, lung, liver, brown

fat, kidney, small intestine, colon, uterus, muscle and skin. A few cells expressed in heart, stomach, adrenal gland, pancreas, spleen, ovary and thymus. Tissues that unexpressed include salivary glands. (5-week old, female) (For more detailed information please contact our technical advisor.)
