

hCCR8(2)/hCTLA-4

Nomenclature	C57BL/6Smoc- <i>Ccr8</i> ^{em3(hCCR8)} <i>Ctla4</i> ^{em1(hCTLA4)Smoc}
Cat. NO.	NM-HU-220074
Strain State	Embryo cryopreservation

Gene Summary

Gene Symbol CCR8	Synonyms	Cmkbr8
	NCBI ID	12776
	MGI ID	1201402
	Ensembl ID	ENSMUSG00000042262
	Human Ortholog	CCR8
Gene Symbol CTLA4	Synonyms	Cd152; Ly-56; Ctla-4
	NCBI ID	12477
	MGI ID	88556
	Ensembl ID	ENSMUSG00000026011
	Human Ortholog	CTLA4

Model Description

hCTLA4 (NM-HU-00014) mice were crossed with hCCR8(2) (NM-HU-2000054) mice to generate hCCR8(2)/hCTLA4 mice.

*Literature published using this strain should indicate: hCCR8(2)/hCTLA-4 mice (Cat. NO. NM-HU-220074) were purchased from Shanghai Model Organisms Center, Inc..

Validation Data

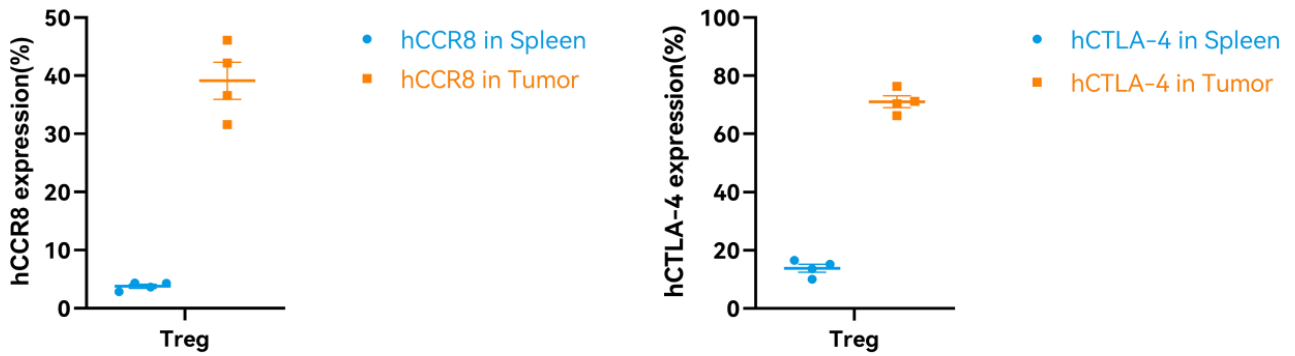


Fig1. Statistics of hCCR8 and hCTLA-4 expression in hCCR8(2)/hCTLA-4 dKI mice.

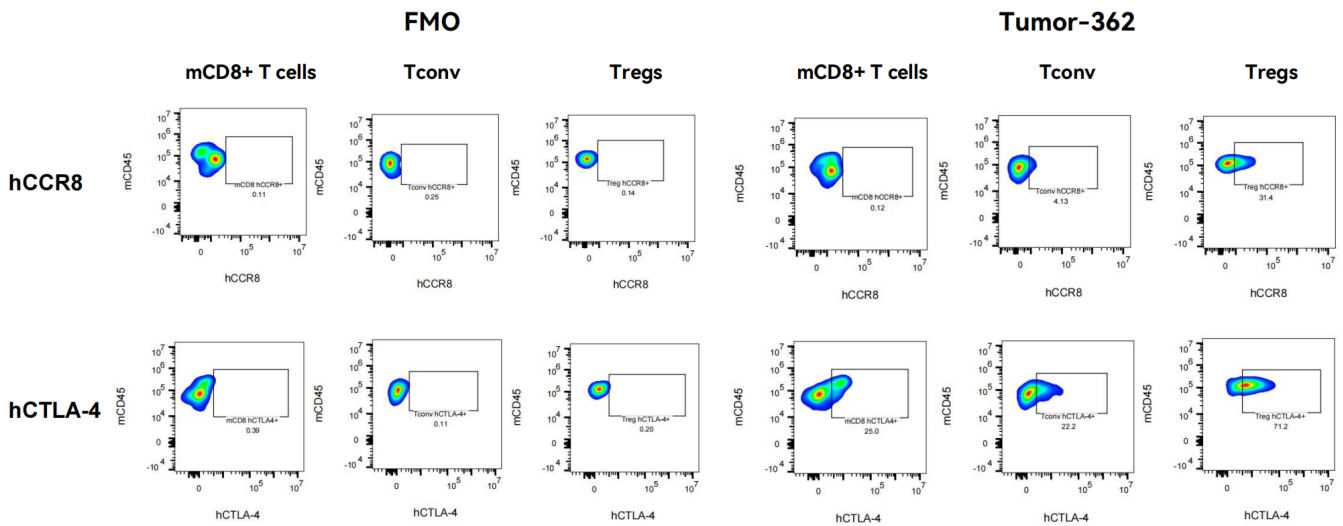


Fig2. Detection of hCCR8 and CTLA-4 expression on T cells in Tumor in hCCR8(2)/hCTLA-4 dKI mice.

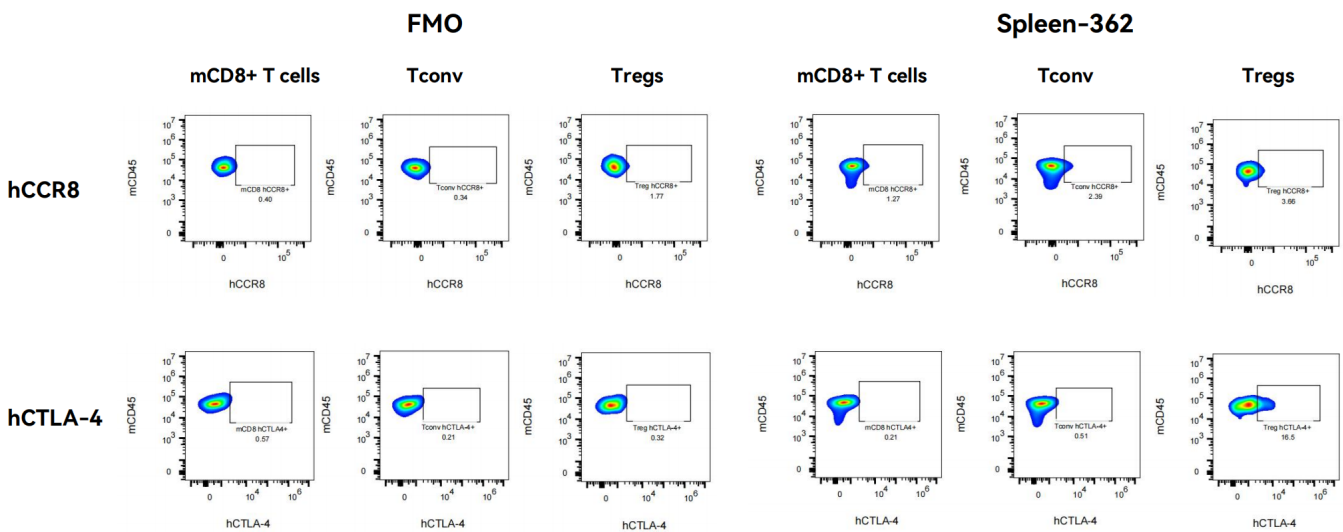


Fig3. Detection of hCCR8 and hCTLA-4 expression on T cells in Spleen in hCCR8(2)/hCTLA-4 dKI

mice.
