

Ncr1-2A-CreERT2

Nomenclature	C57BL/6Smoc- <i>Ncr1</i> ^{em4(2A-CreERT2-WPRE-polyA)Smoc}
Cat. NO.	NM-KI-200004
Strain State	Repository Live

Gene Summary

Gene Symbol Ncr1	Synonyms	Ly94; NKp46
	NCBI ID	17086
	MGI ID	1336212
	Ensembl ID	ENSMUSG00000062524
	Human Ortholog	NCR1

Model Description

A 2A-CreERT2-WPRE-polyA expression cassette was knocked into the Ncr1 gene stop codon site.

Research Application: Cre recombinase tool

*Literature published using this strain should indicate: Ncr1-2A-CreERT2 mice (Cat. NO. NM-KI-200004) were purchased from Shanghai Model Organisms Center, Inc..

Validation Data

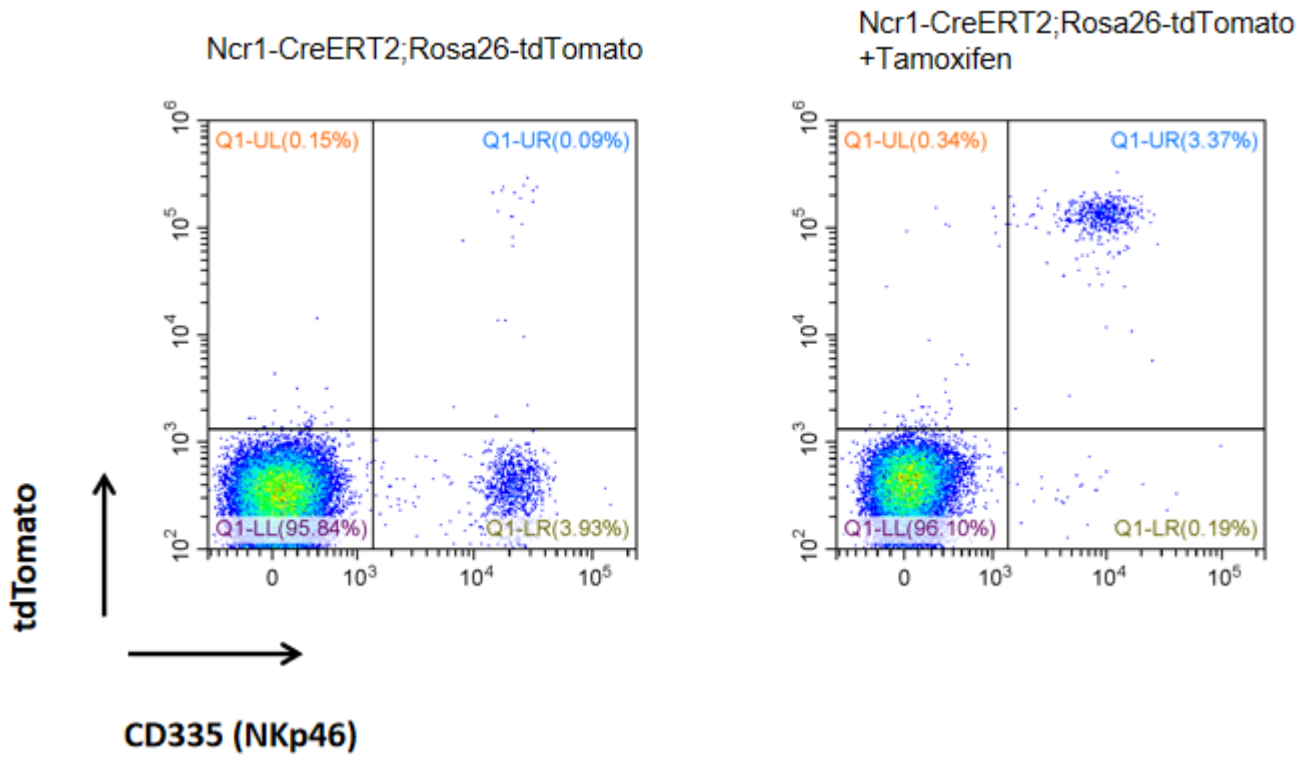


Fig1 CreERT2-mediated recombination in NK cells derived from peripheral blood of Ncr1-(2A-CreERT2);Rosa26 tdTomato mice.