

Cpa3-2A-CreERT2

Nomenclature	C57BL/6Smoc- <i>Cpa3</i> ^{em2(2A-CreERT2-WPRE-polyA)Smoc}
Cat. NO.	NM-KI-200005
Strain State	Repository Live

Gene Summary

Gene Symbol Cpa3	Synonyms	MC-CPA
	NCBI ID	12873
	MGI ID	88479
	Ensembl ID	ENSMUSG00000001865
	Human Ortholog	CPA3

Model Description

A 2A-CreERT2-WPRE-polyA expression cassette was knocked into the Cpa3 gene stop codon site.

Research Application: Cre recombinase tool

*Literature published using this strain should indicate: Cpa3-2A-CreERT2 mice (Cat. NO. NM-KI-200005) were purchased from Shanghai Model Organisms Center, Inc..

Validation Data

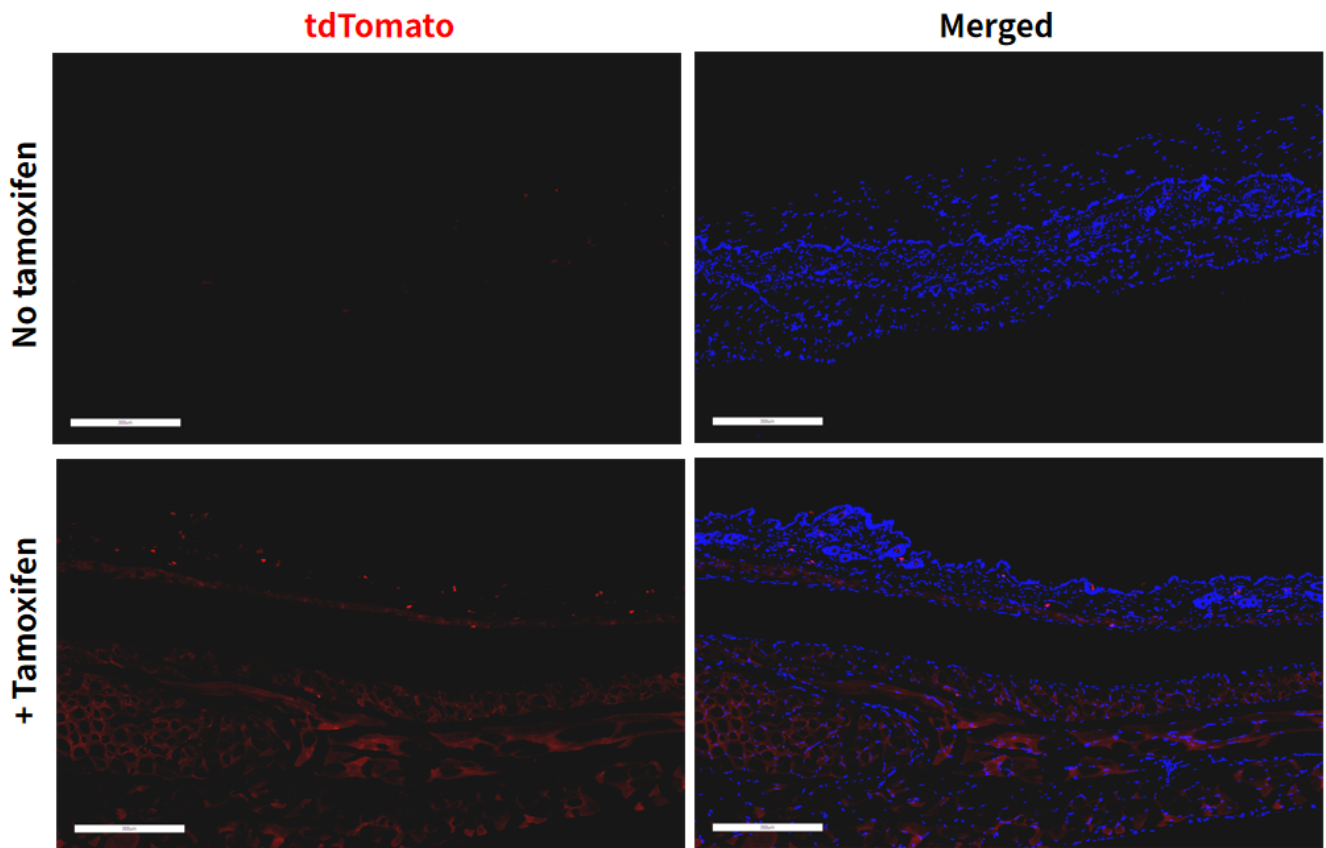


Fig1. Cre mediated recombination in skin of $Cpa3^{CreERT2/+};Rosa26^{tdTomato/+}$ mouse.

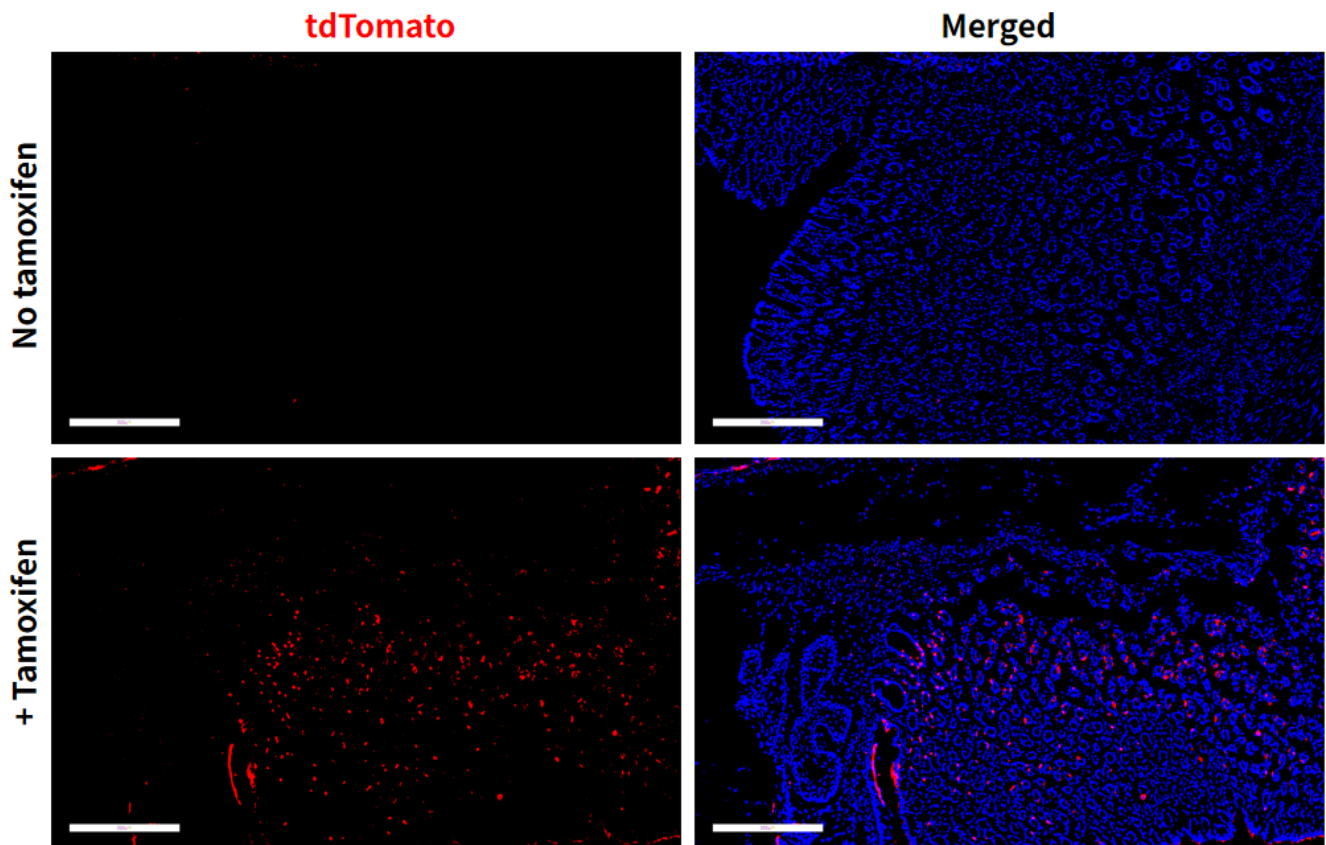


Fig2. Cre mediated recombination in stomach of $Cpa3^{CreERT2/+};Rosa26^{tdTomato/+}$ mouse.

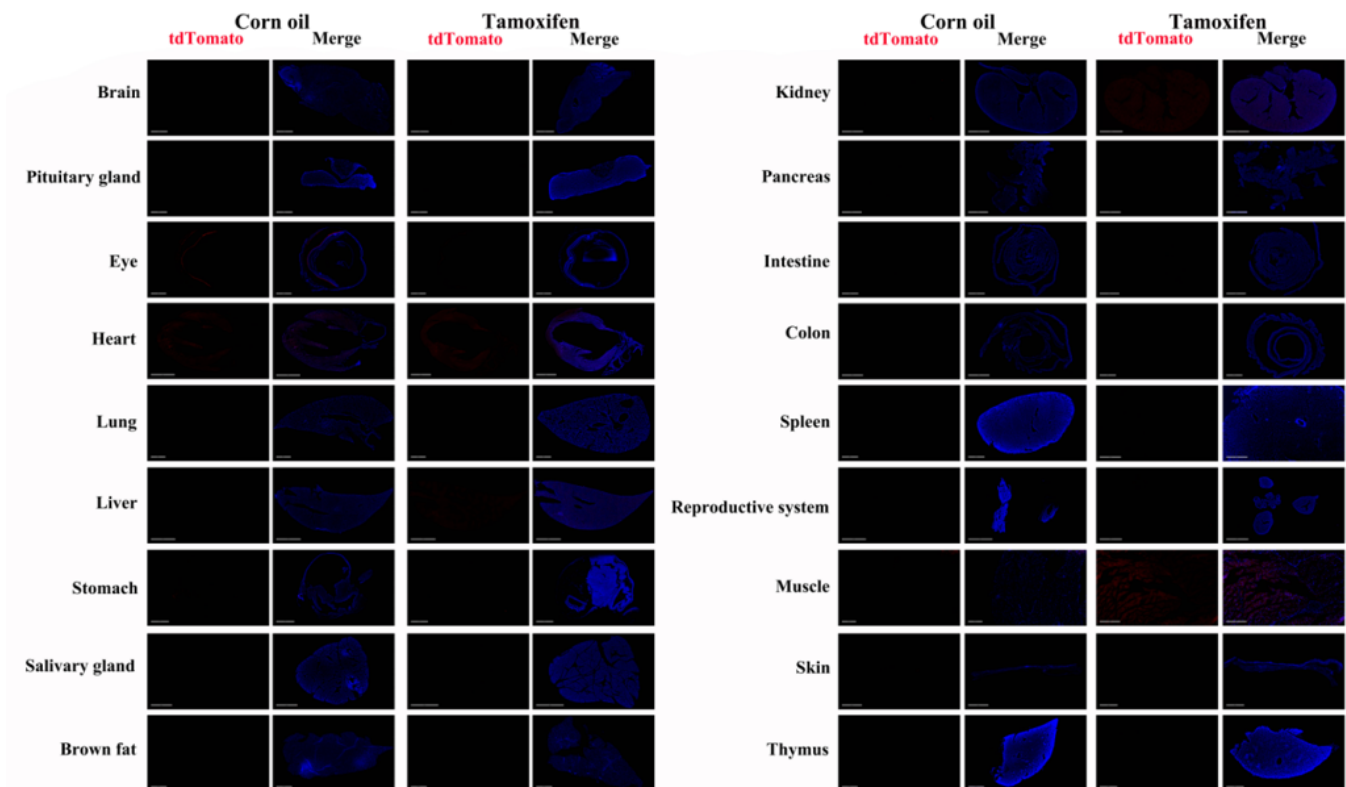


Fig3. Detection of tdTomato(red) in various tissues of $Cpa3^{CreERT2/+};Rosa26^{tdTomato/+}$ mouse. Expression tissues include: salivary gland, lung, ovaries and uterus. No obvious positive signals were observed in the brain, pituitary gland, retina, heart, lungs, liver, brown fat, muscles, kidneys, pancreas, small intestine, large intestine, spleen and thymus.(61-days old, female) (For more detailed information please contact our technical advisor.)