

# Mcpt8-2A-CreERT2

<b>Nomenclature</b>	C57BL/6Smoc- <i>Mcpt8</i> <sup>em1(2A-CreERT2-WPRE-polyA)Smoc</sup>
<b>Cat. NO.</b>	NM-KI-200006
<b>Strain State</b>	Repository Live

## Gene Summary

<b>Gene Symbol</b> <b>Mcpt8</b>	<b>Synonyms</b>	MMCP-8; BB139338
	<b>NCBI ID</b>	<a href="#">17231</a>
	<b>MGI ID</b>	<a href="#">1261780</a>
	<b>Ensembl ID</b>	<a href="#">ENSMUSG00000022157</a>
	<b>Human Ortholog</b>	MCPT8

## Model Description

A 2A-CreERT2-WPRE-polyA expression cassette was knocked into the *Mcpt8* gene stop codon site.

**Research Application:** Cre recombinase tool, basophils

\*Literature published using this strain should indicate: *Mcpt8*-2A-CreERT2 mice (Cat. NO. NM-KI-200006) were purchased from Shanghai Model Organisms Center, Inc..

## Validation Data

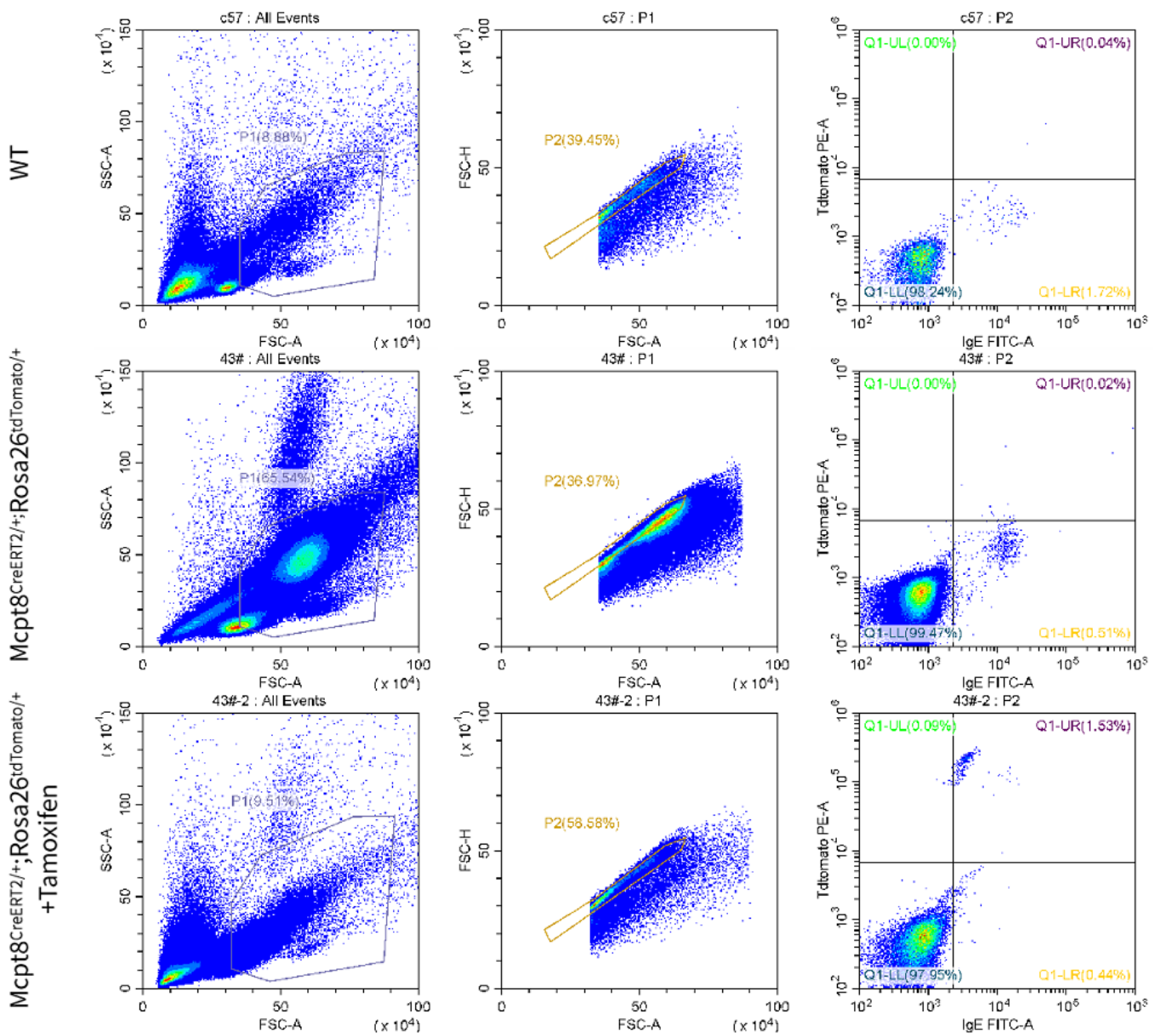


Fig.1 Flow cytometry analysis of tdTomato expression in IgE+ cells derived from peripheral blood in the Mcpt8CreERT2/+; Rosa26tdTomato/+ mouse model after tamoxifen treatment.