

hCD22

Nomenclature	C57BL/6Smoc- <i>Cd22</i> ^{em2(hCD22)Smoc}
Cat. NO.	NM-HU-2000014
Strain State	Embryo cryopreservation

Gene Summary

Gene Symbol Cd22	Synonyms	Lyb8; Lyb-8; A530093D23
	NCBI ID	12483
	MGI ID	88322
	Ensembl ID	ENSMUSG00000030577
	Human Ortholog	CD22

Model Description

The endogenous mouse Cd22 gene was replaced by human CD22 gene.

Research Application: Immunotherapy, cancer research, drug screening

*Literature published using this strain should indicate: hCD22 mice (Cat. NO. NM-HU-2000014) were purchased from Shanghai Model Organisms Center, Inc..

Validation Data

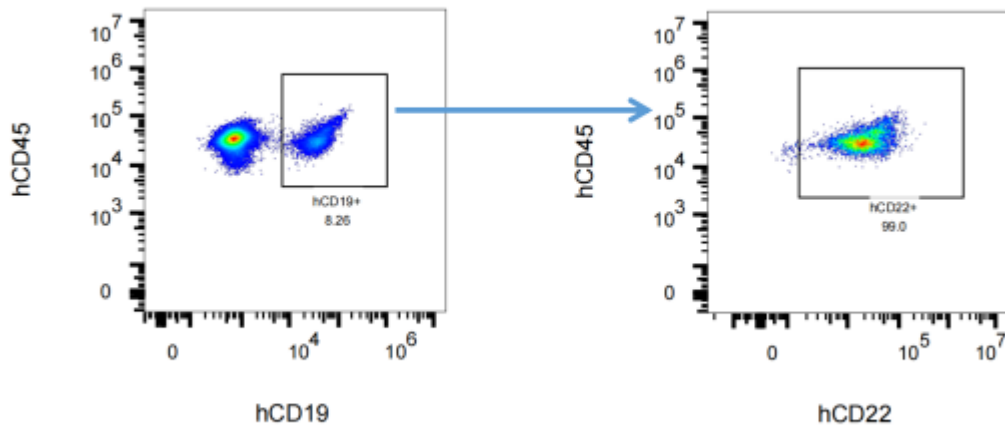


Fig1. Detection of hCD22 expression on B cells in hPBMC.

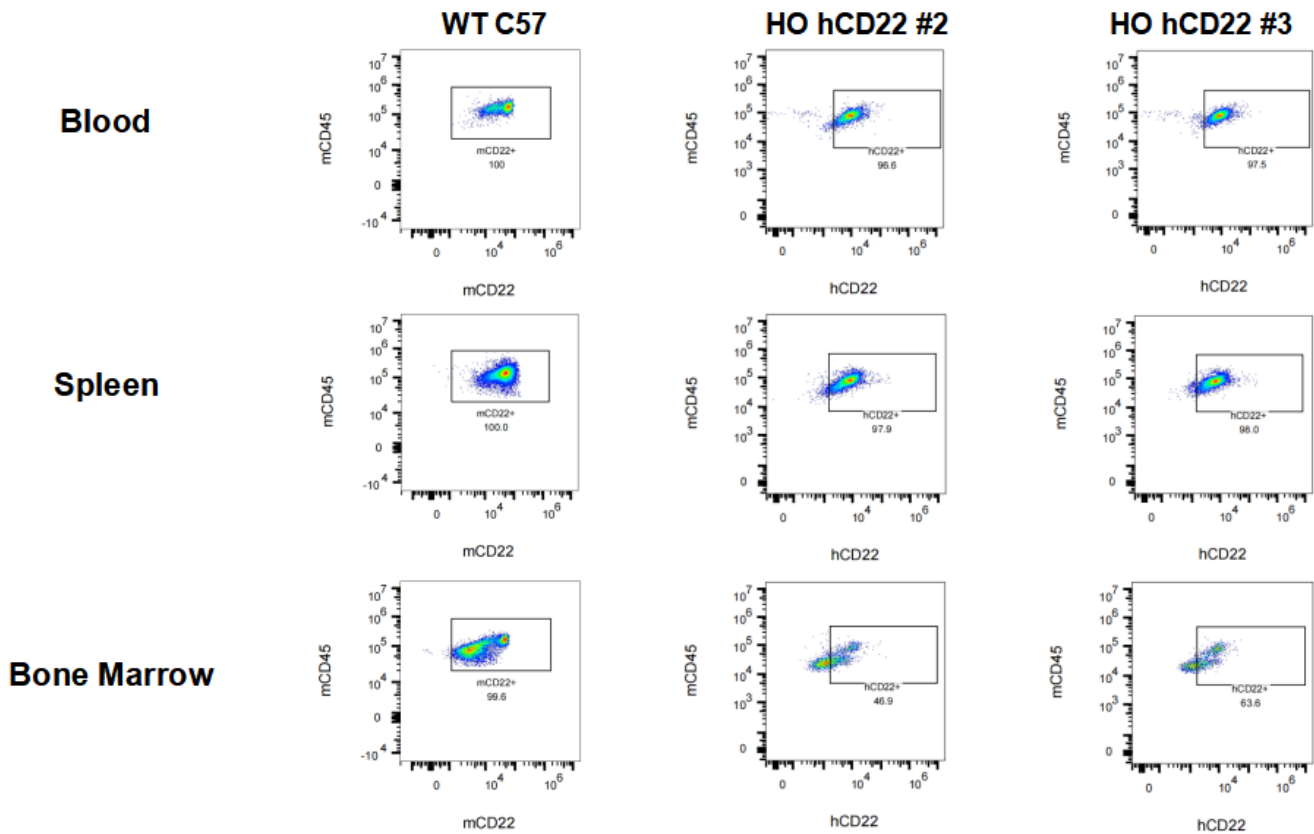


Fig2. Detection of hCD22 expression on B cells in hCD22 KI mice.