

Ccr2-2A-DreERT2

Nomenclature	C57BL/6Smoc- <i>Ccr2</i> ^{em3(2A-DreERT2)Smoc}
Cat. NO.	NM-KI-200023
Strain State	Sperm cryopreservation

Gene Summary

Gene Symbol Ccr2	Synonyms	Ckr2; Ccr2a; Ccr2b; Ckr2a; Ckr2b; mJe-r; Cmkbr2; Cc-ckr-2
	NCBI ID	12772
	MGI ID	106185
	Ensembl ID	ENSMUSG00000049103
	Human Ortholog	CCR2

Model Description

A 2A-DreERT2 expression cassette was knocked into the Ccr2 gene stop codon site.

Research Application: Dre recombinase tool

*Literature published using this strain should indicate: Ccr2-2A-DreERT2 mice (Cat. NO. NM-KI-200023) were purchased from Shanghai Model Organisms Center, Inc..

Validation Data

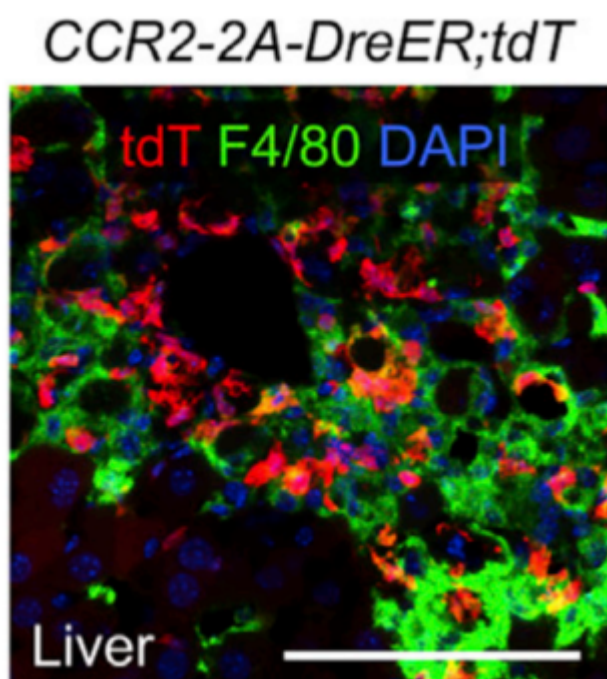


Fig.1 DreERT2-mediated recombination in the liver of $Ccr2^{DreERT2/+}$; $R26^{tdTomato/+}$ mouse. TdTomato (red) expression can be detected in the liver after tamoxifen treatment. The F4/80 molecule is a unique marker of murine macrophages. (Documented in the following reference.)

Publications

[A Suite of New Dre-recombinase Drivers Markedly Expands the Ability to Perform Intersectional Genetic Targeting](#)

References: CELL STEM CELL