

S100a4-2A-CreERT2

Nomenclature	C57BL/6Smoc- <i>S100a4</i> ^{em1(2A-CreERT2-WPRE-polyA)} Smoc
Cat. NO.	NM-KI-200024
Strain State	Sperm cryopreservation

Gene Summary

Gene Symbol	Synonyms	42a, 18A2, Capl, FSp1, Mts1, pk9a, PeL98, metastasin
	NCBI ID	20198
	MGI ID	1330282
	Ensembl ID	ENSMUSG00000001020
	Human Ortholog	S100A4

Model Description

A 2A-CreERT2-WPRE-polyA expression cassette was knocked into the S100a4 gene stop codon site.

Research Application: Cre recombinase tool

*Literature published using this strain should indicate: S100a4-2A-CreERT2 mice (Cat. NO. NM-KI-200024) were purchased from Shanghai Model Organisms Center, Inc..

Validation Data

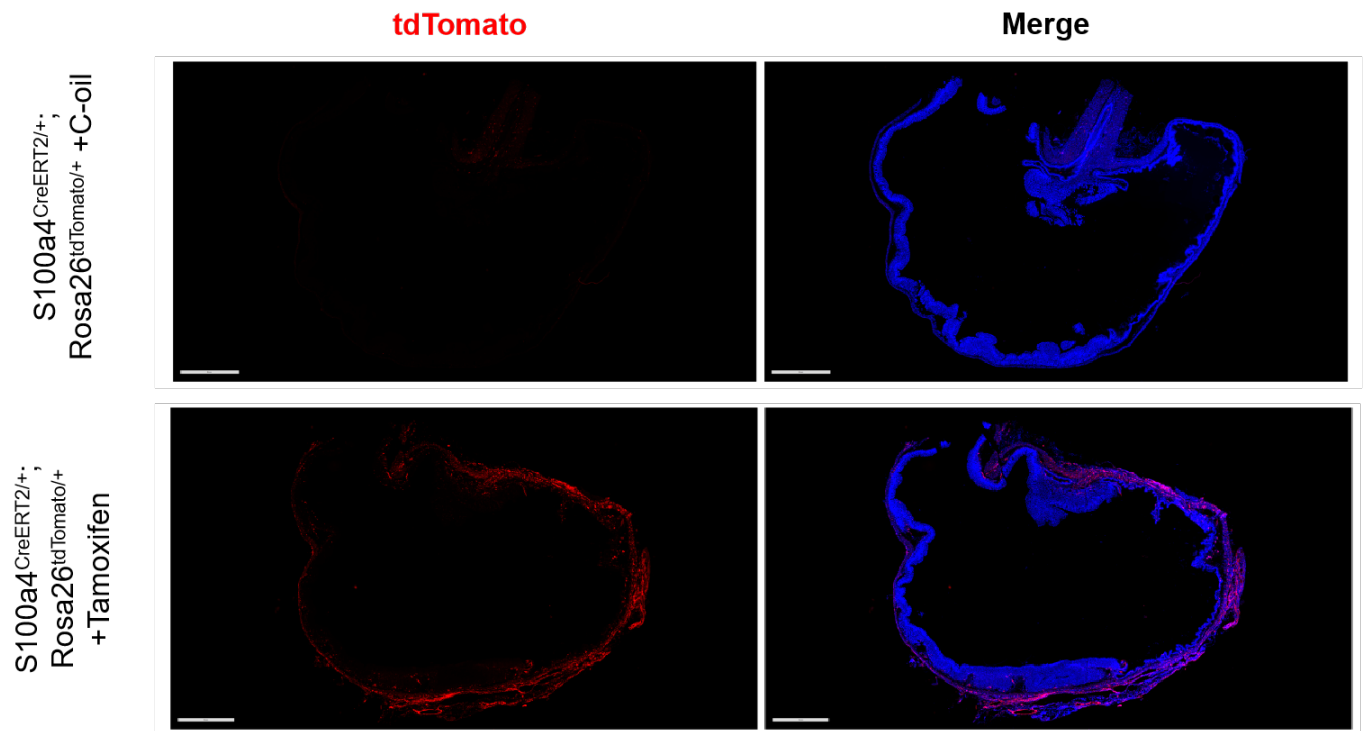


Figure 1: CreERT2-mediated recombination in the stomach of S100a4CreERT2^{+/+}; Rosa26tdTomato^{+/+} mice. Detection of tdTomato (red) in fibroblasts of S100a4CreERT2^{+/+}; Rosa26tdTomato^{+/+} mice after tamoxifen treatment.

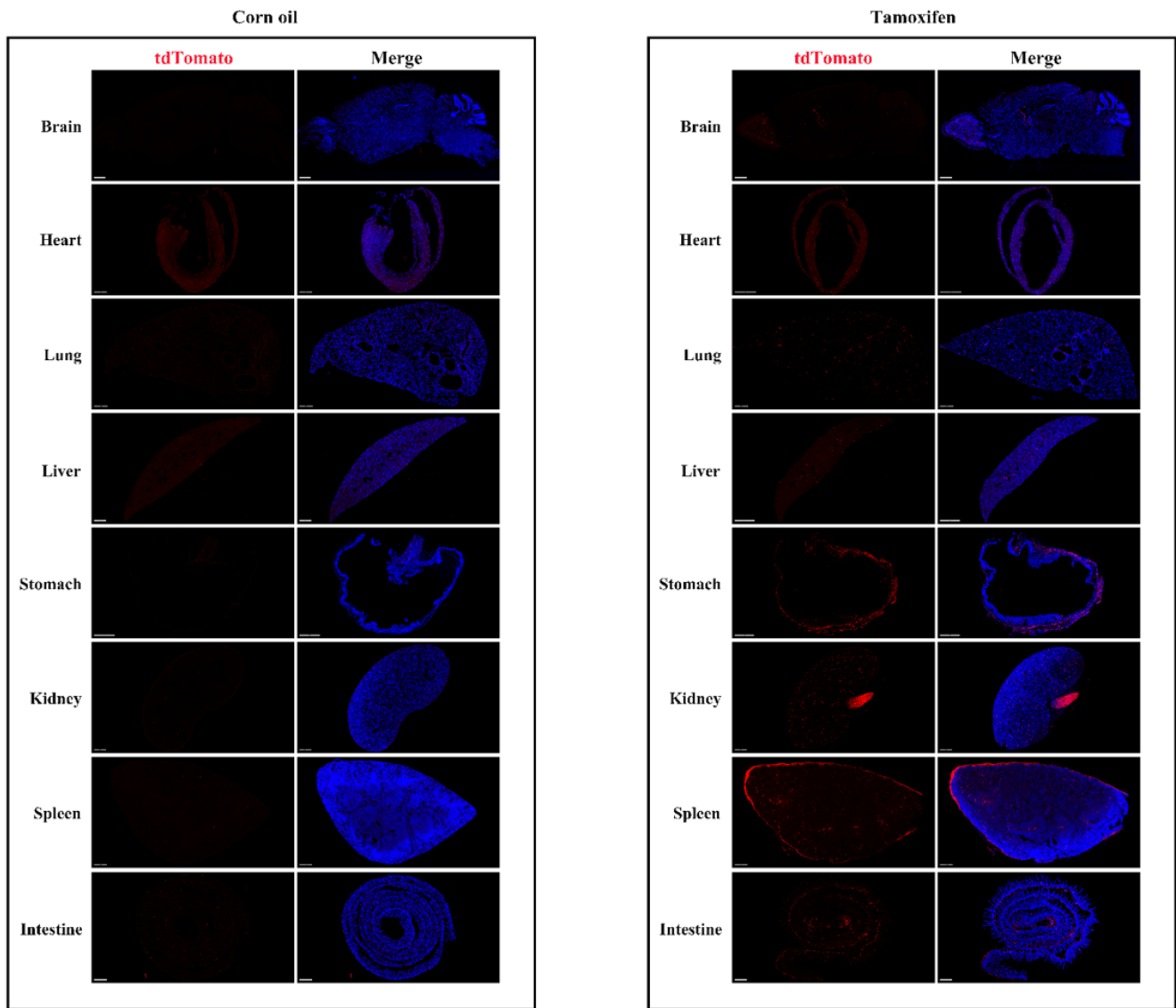


Figure 2: Detection of tdTomato (red) in various tissues of S100a4CreERT2/+; Rosa26tdTomato/+ mice after tamoxifen treatment.