

Lyz2-IRES-mtagBFP2-Luc

Nomenclature	C57BL/6Smoc- <i>Lyz2</i> ^{em4(IRES-mtagBFP-Luci)Smoc}
Cat. NO.	NM-KI-200029
Strain State	Sperm cryopreservation

Gene Summary

Gene Symbol Lyz2	Synonyms	Lys; Lzm; Lzp; Lysm; Lyzs; Lyzf2; Lzm-s1; AI326280
	NCBI ID	17105
	MGI ID	96897
	Ensembl ID	ENSMUSG00000069516
	Human Ortholog	LYZ2

Model Description

A IRES-mtagBFP-luci expression cassette was knocked into the Lyz2 gene stop codon site.

Research Application: Monocyte macrophage reporter

*Literature published using this strain should indicate: Lyz2-IRES-mtagBFP2-Luc mice (Cat. NO. NM-KI-200029) were purchased from Shanghai Model Organisms Center, Inc..

Validation Data

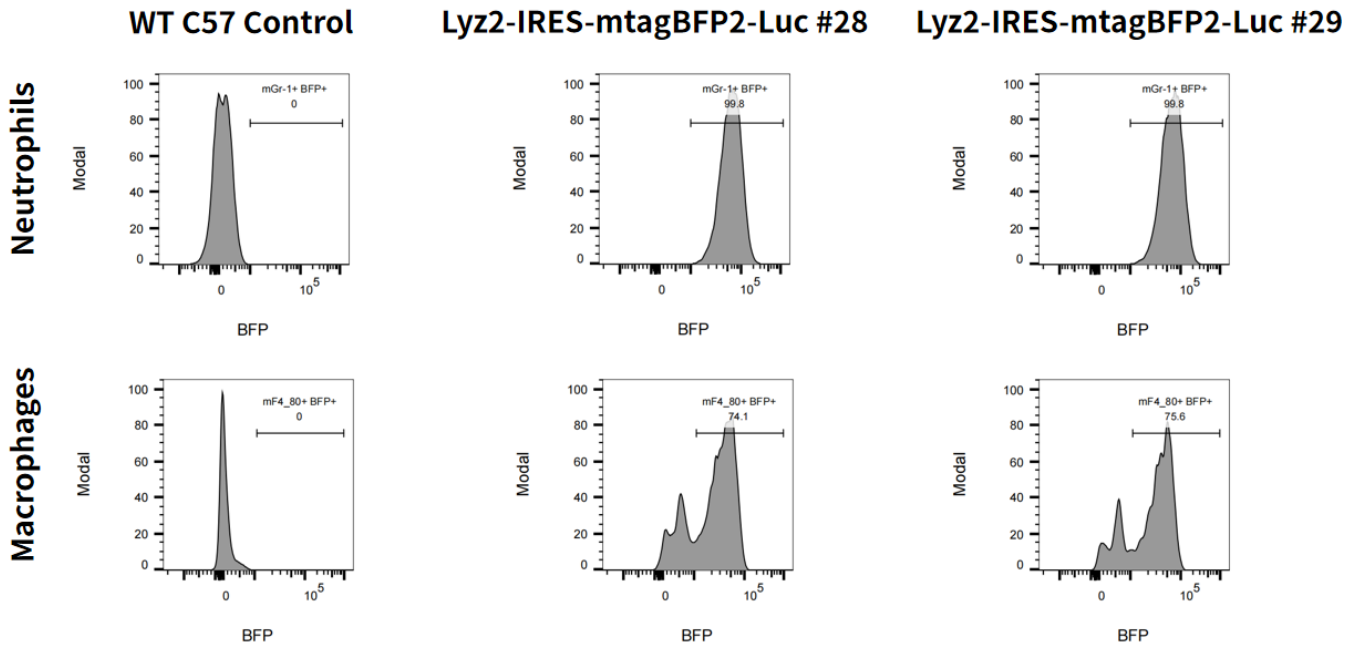


Fig.1 Detection of BFP expression on Macrophages and Neutrophils in BM in Lyz2-IRES-mtagBFP2-Luc mice.

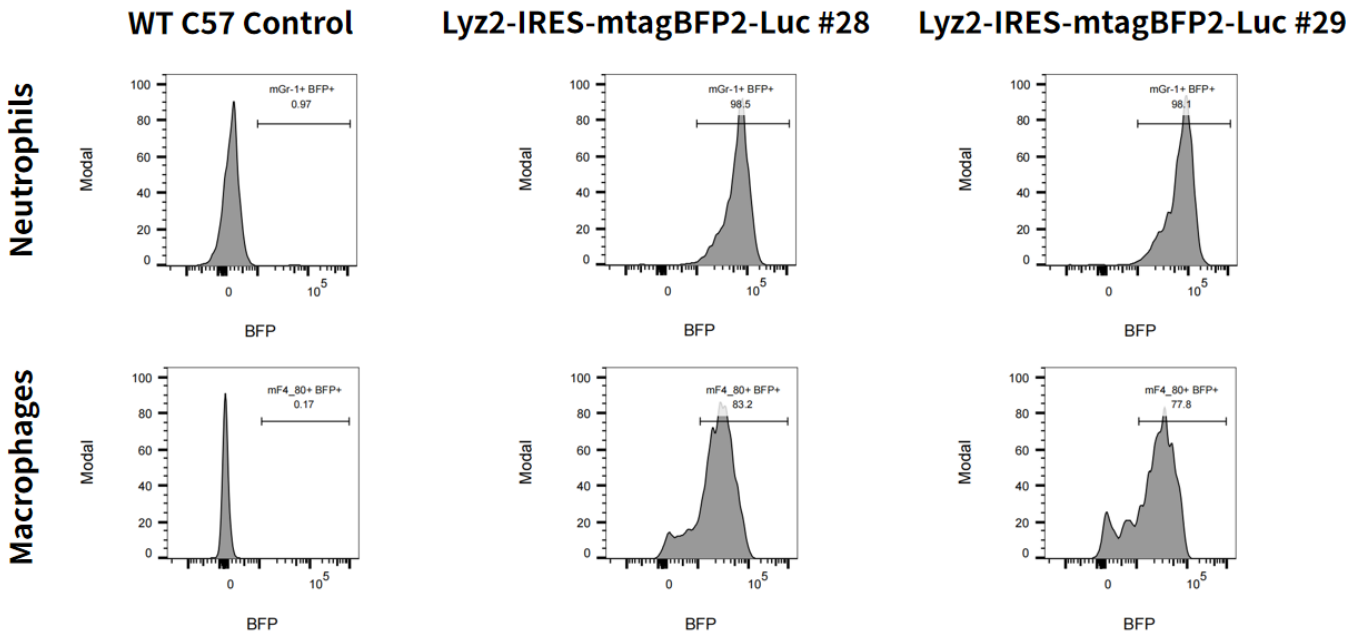


Fig.2 Detection of BFP expression on Macrophages and Neutrophils in Blood in Lyz2-IRES-mtagBFP2-Luc mice.

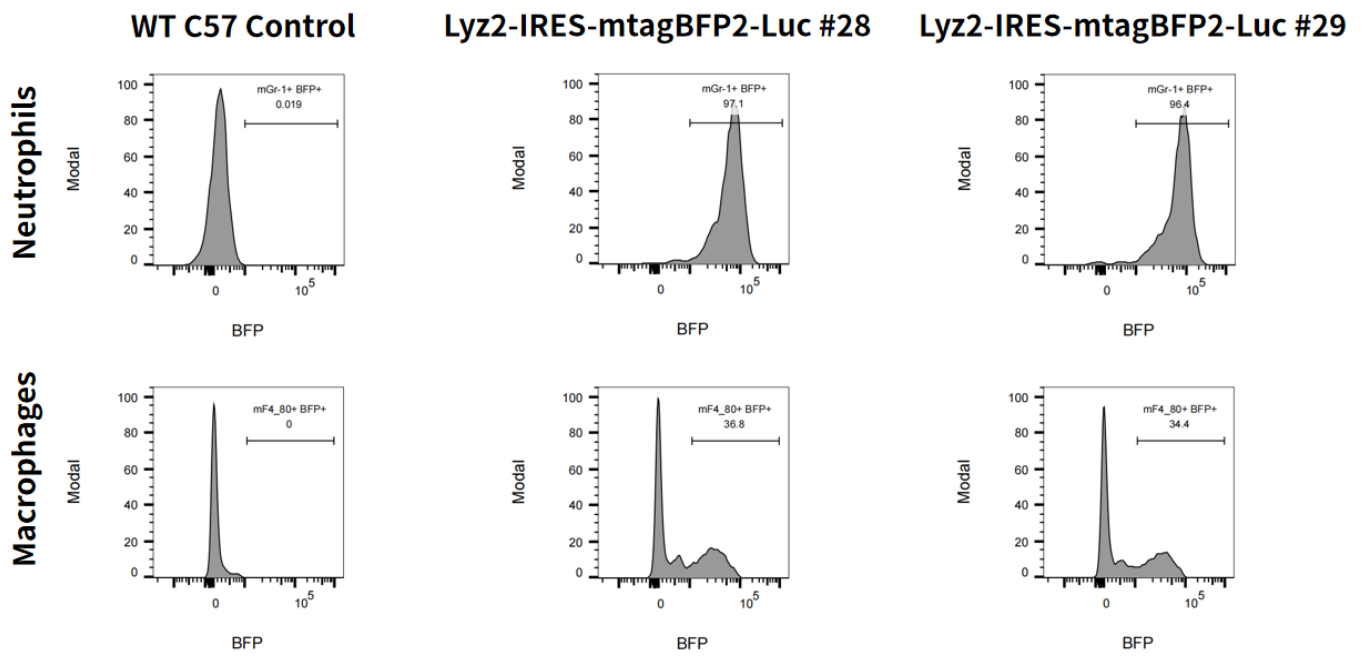


Fig.3 Detection of BFP expression on Macrophages and Neutrophils in Spleen in Lyz2-IRES-mtagBFP2-Luc mice.