

# Ncr1-IRES-mtagBFP2-Luc

<b>Nomenclature</b>	C57BL/6Smoc- <i>Ncr1</i> <sup>em5(IRES-mtagBFP-luciferase)Smoc</sup>
<b>Cat. NO.</b>	NM-KI-200030
<b>Strain State</b>	Embryo cryopreservation

## Gene Summary

<b>Gene Symbol</b> Ncr1	<b>Synonyms</b>	Ly94; NKp46
	<b>NCBI ID</b>	<a href="#">17086</a>
	<b>MGI ID</b>	<a href="#">1336212</a>
	<b>Ensembl ID</b>	<a href="#">ENSMUSG00000062524</a>
	<b>Human Ortholog</b>	NCR1

## Model Description

A IRES-mtagBFP-luciferase expression cassette was knocked into the Ncr1 gene stop codon site.

**Research Application:** NK cell reporter

\*Literature published using this strain should indicate: Ncr1-IRES-mtagBFP2-Luc mice (Cat. NO. NM-KI-200030) were purchased from Shanghai Model Organisms Center, Inc..

## Validation Data

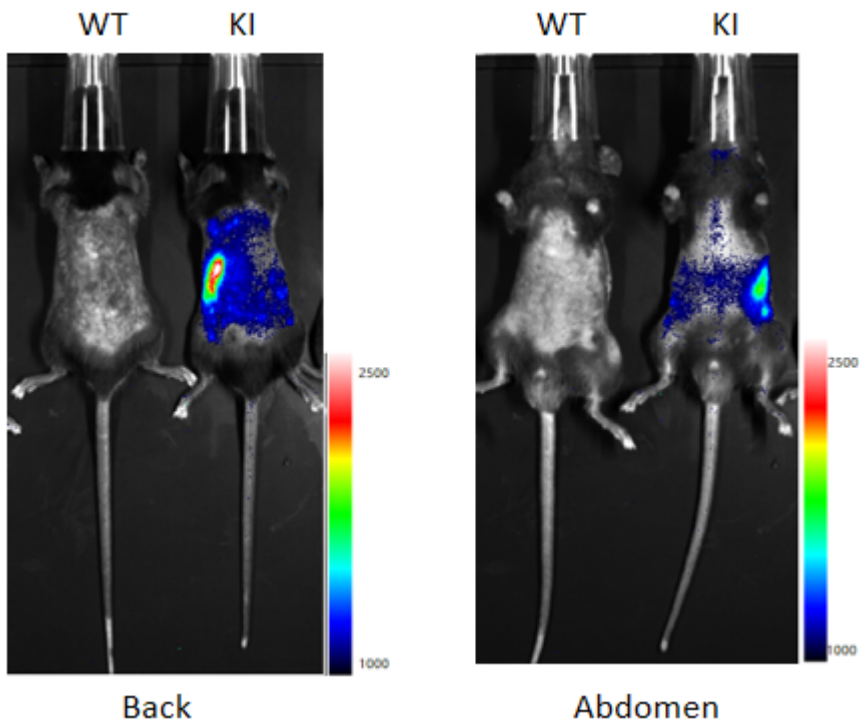


Fig1. Bioluminescence imaging of NK cells in *Ncr1:luciferase* knockin mice.