

hCCR8(BALB/c)

Nomenclature	BALB/cAnSmoc- <i>Ccr8</i> ^{em1(hCCR8)/Smoc}
Cat. NO.	NM-HU-2000048
Strain State	Embryo cryopreservation

Gene Summary

Gene Symbol CCR8	Synonyms	Cmkbr8
	NCBI ID	12776
	MGI ID	1201402
	Ensembl ID	ENSMUSG00000042262
	Human Ortholog	CCR8

Model Description

The endogenous mouse *Ccr8* gene was replaced by human CCR8 gene.

Research Application: Immunotherapy, drug screening

*Literature published using this strain should indicate: hCCR8(BALB/c) mice (Cat. NO. NM-HU-2000048) were purchased from Shanghai Model Organisms Center, Inc..

Validation Data

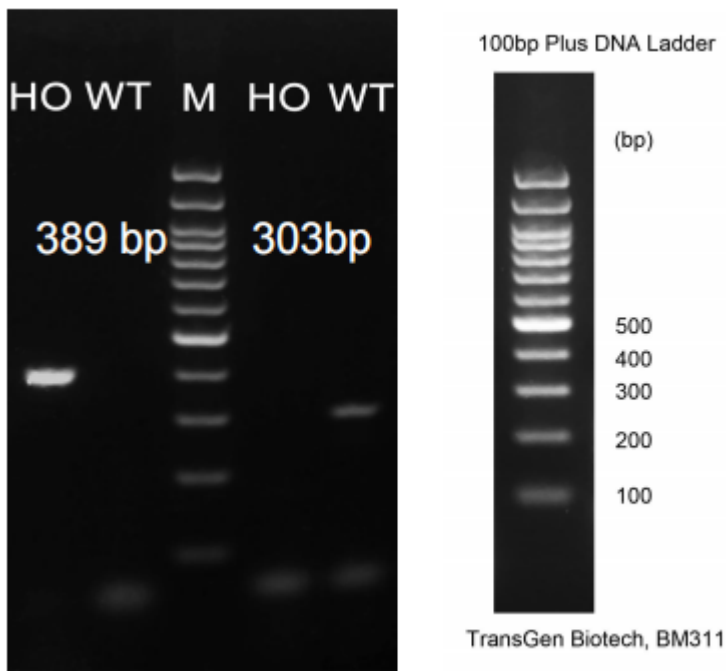


Fig1. Detection of CCR8 expression in thymus by RT-PCR. Wild type: only one band at 303 bp with primers F1/R1(mCcr8); Homozygous: only one band at 389 bp with primers F2/R2(hCCR8); Abbr. M, DNA marker; HO, homozygous; HE, heterozygous; WT, wild type.