

# hCD24

<b>Nomenclature</b>	C57BL/6Smoc- <i>Cd24a</i> <sup>tm1(hCD24)/Smoc</sup>
<b>Cat. NO.</b>	NM-HU-2000060
<b>Strain State</b>	Repository Live

## Gene Summary

<b>Gene Symbol</b> CD24a	<b>Synonyms</b>	HSA; Cd24; Ly-52; nectadrin
	<b>NCBI ID</b>	<a href="#">12484</a>
	<b>MGI ID</b>	<a href="#">88323</a>
	<b>Ensembl ID</b>	<a href="#">ENSMUSG00000047139</a>
	<b>Human Ortholog</b>	CD24A

## Model Description

The endogenous mouse Cd24a gene was replaced by human CD24 gene. While hCD24(2)(Stock No.NM-HU-215025) mice function similarly to hCD24 mice, for more detailed information please contact our technical advisor.

**Research Application:** Immunotherapy, drug screening

\*Literature published using this strain should indicate: hCD24 mice (Cat. NO. NM-HU-2000060) were purchased from Shanghai Model Organisms Center, Inc..

## Validation Data

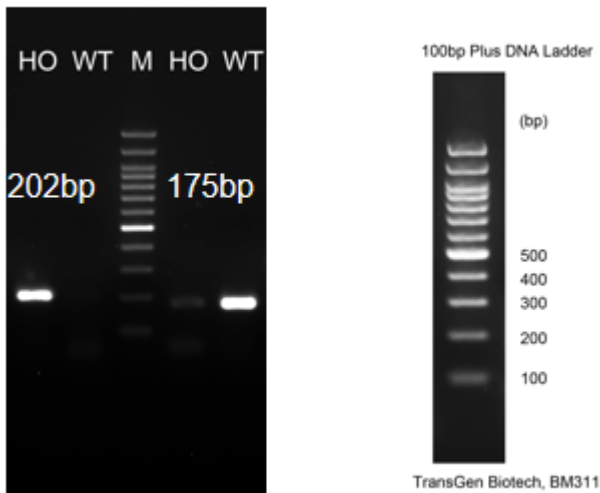


Fig1. Detection of CD24 expression in spleen and brain by RT-PCR. Wild type: only one band at 175 bp with primers F1/R1(mCd24);Homozygous: only one band at 202 bp with primers F2/R2(hCD24); Abbr.. M, DNA marker; HO, homozygous; HE, heterozygous; WT, wild type.

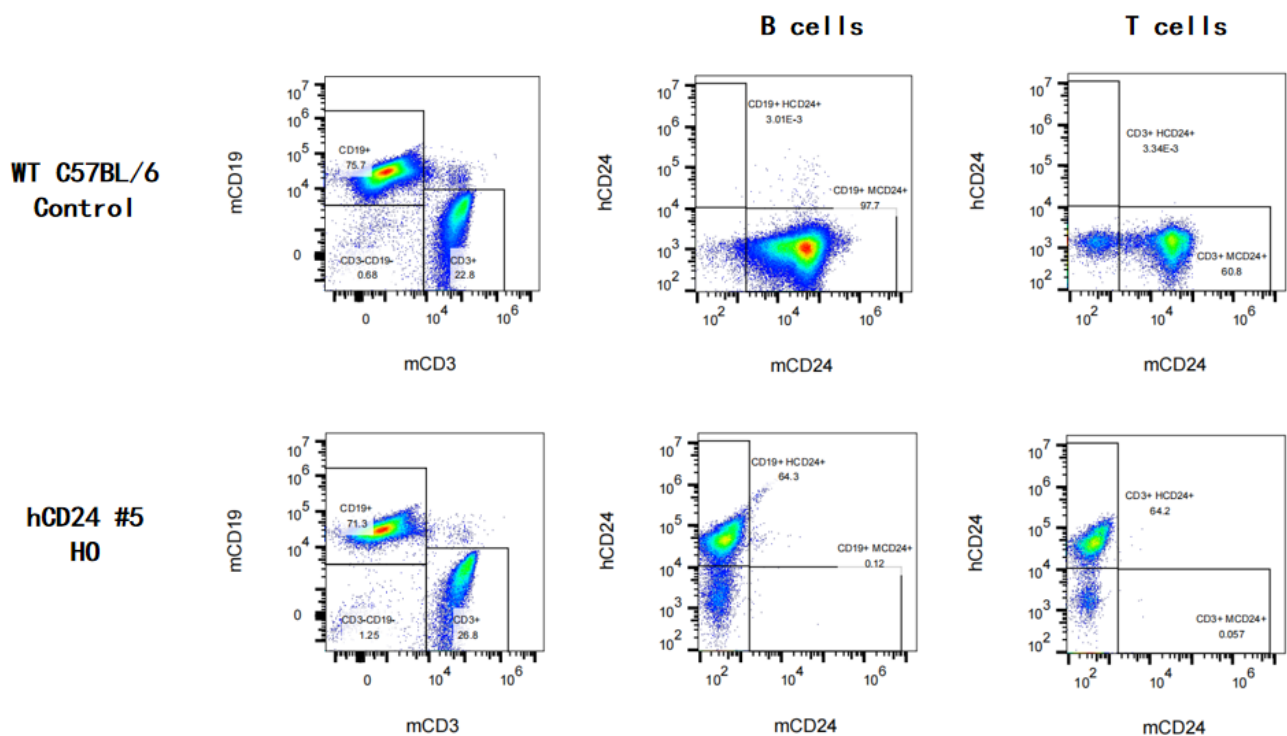


Fig2. Detection of hCD24 expression on B cells and T cells in blood in hCD24 KI mice.

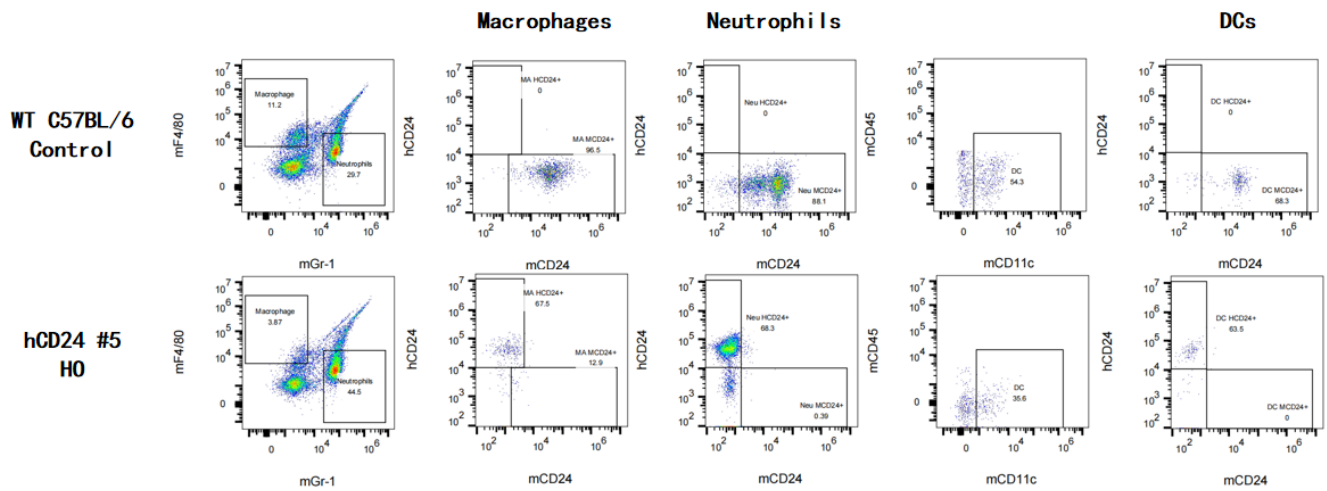


Fig3. Detection of hCD24 expression on macrophages, neutrophils and DCs in blood in hCD24 KI mice.

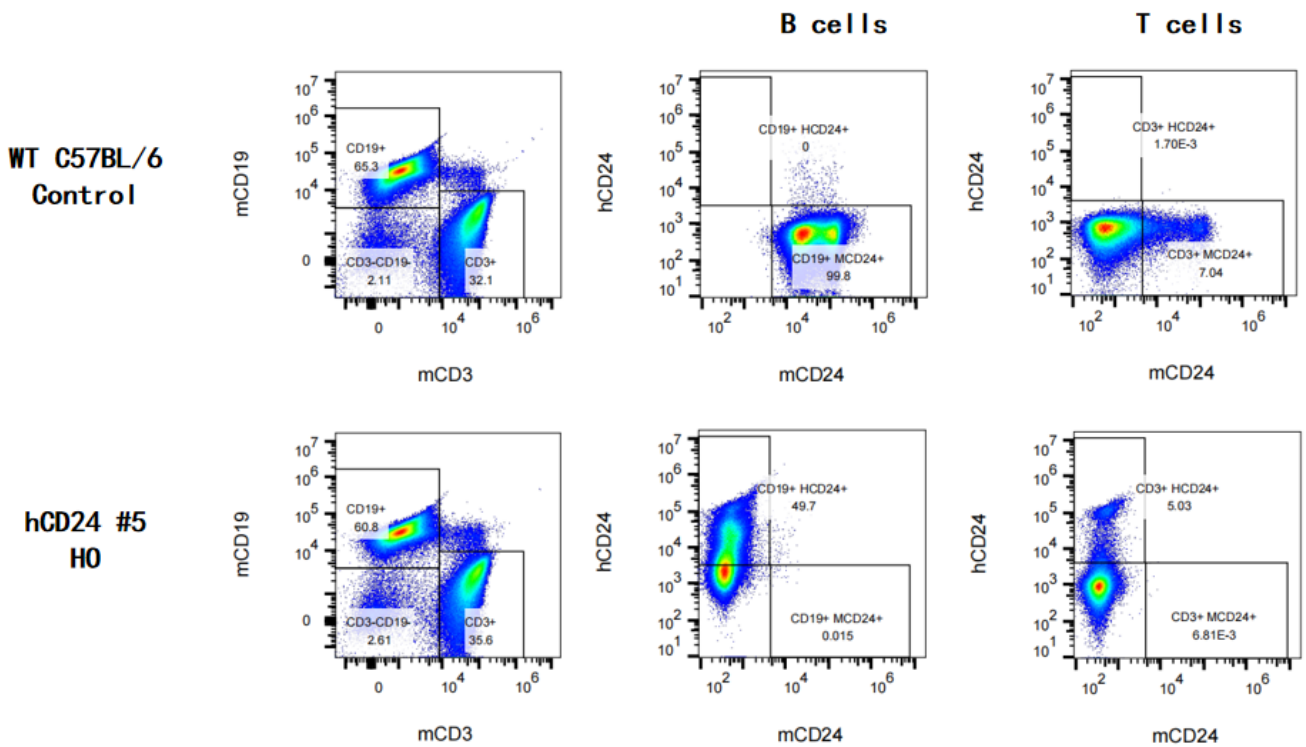


Fig4. Detection of hCD24 expression on B cells and T cells in spleen in hCD24 KI mice.

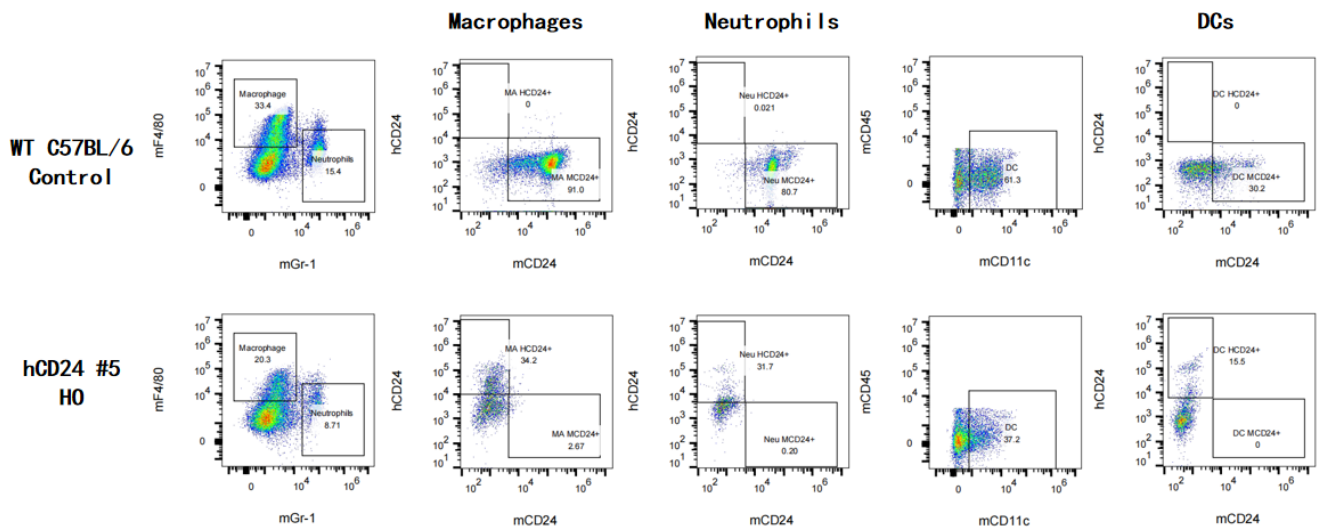


Fig5. Detection of hCD24 expression on macrophages, neutrophils and DCs in spleen in hCD24 KI mice.

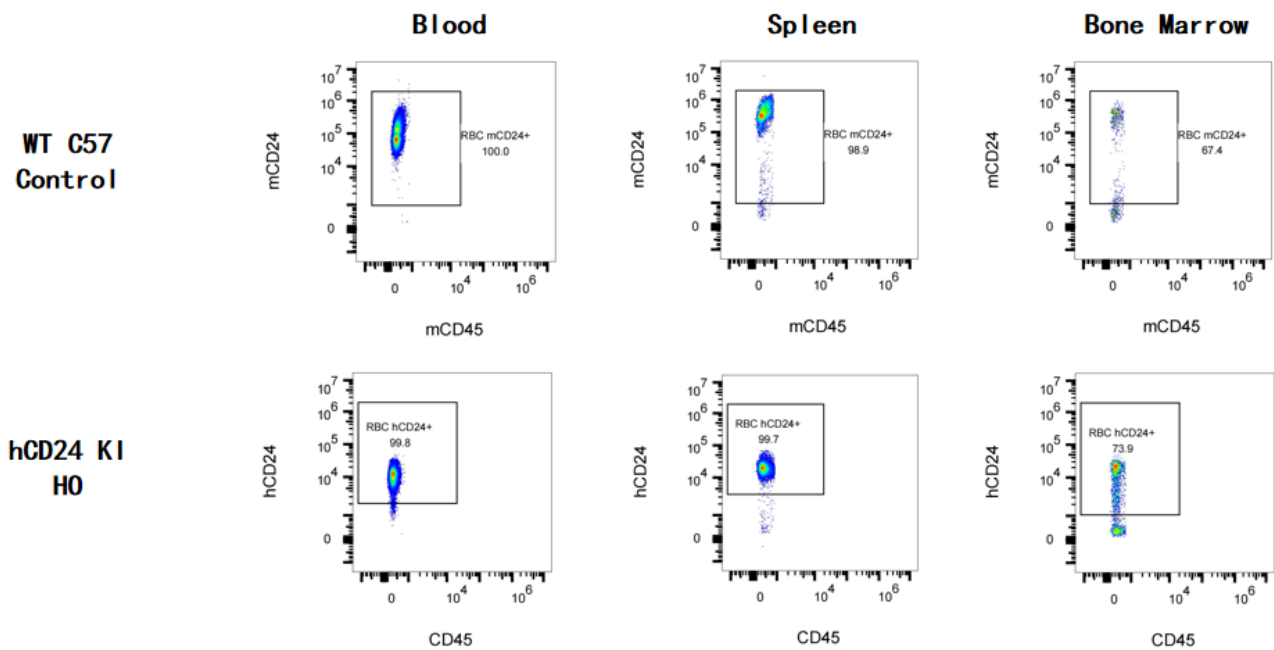


Fig6. Detection of hCD24 expression on RBC (red blood cells) in hCD24 KI mice.