

# hC1S

<b>Nomenclature</b>	C57BL/6Smoc- <i>C1s</i> <sup>em1(hC1S)/Smoc</sup>
<b>Cat. NO.</b>	NM-HU-2000077
<b>Strain State</b>	Repository Live

## Gene Summary

<b>Gene Symbol</b> C1s1	<b>Synonyms</b>	C1s; C1sa; AA959438; AI255193; AI327365
	<b>NCBI ID</b>	<a href="#">50908</a>
	<b>MGI ID</b>	<a href="#">1355312</a>
	<b>Ensembl ID</b>	<a href="#">ENSMUSG00000038521</a>
	<b>Human Ortholog</b>	C1S1

## Model Description

The endogenous mouse C1s1 gene was replaced by human C1S gene.

**Research Application:** Immunotherapy, drug screening

\*Literature published using this strain should indicate: hC1S mice (Cat. NO. NM-HU-2000077) were purchased from Shanghai Model Organisms Center, Inc..

## Validation Data

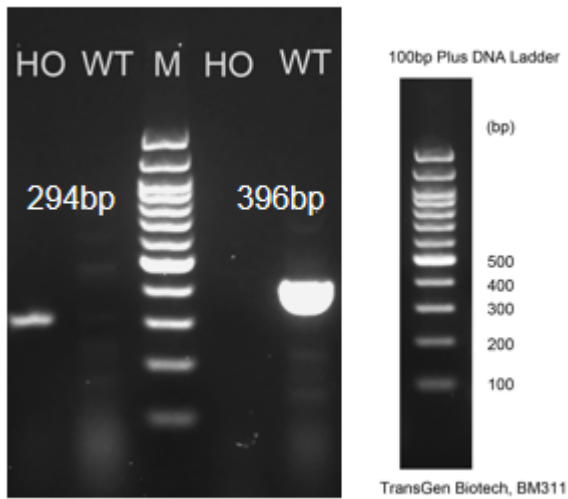


Fig1. Detection of C1S1 expression in bladder by RT-PCR. Wild type: only one band at 396 bp with primers F1/R1(mC1s1); Homozygous: only one band at 294 bp with primers F2/R2(hC1S1); Abbr. M, DNA marker; HO, homozygous; HE, heterozygous; WT, wild type.

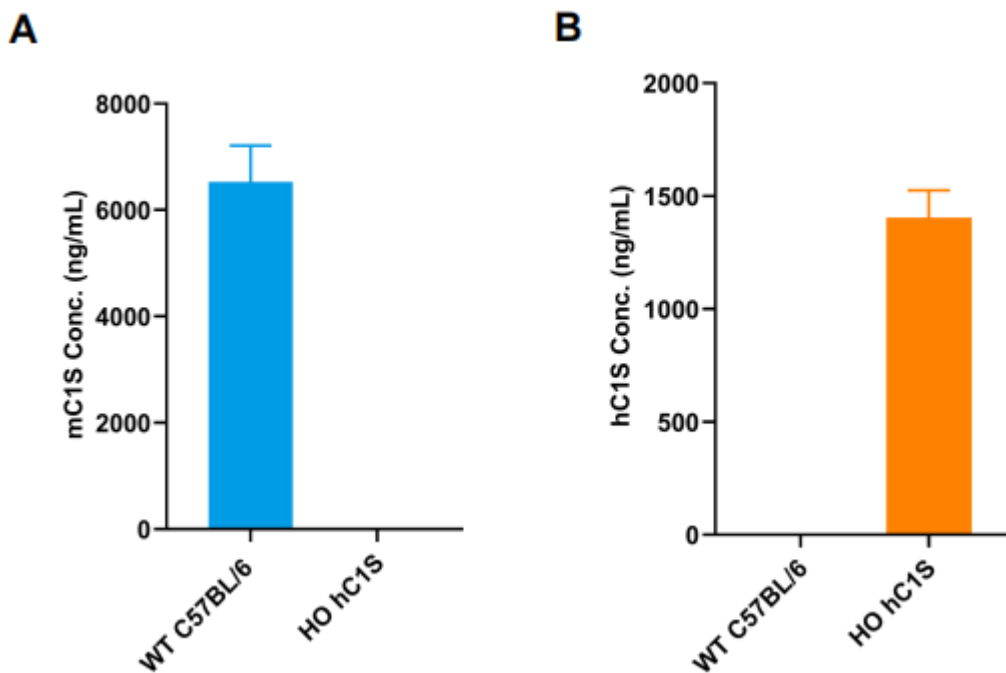
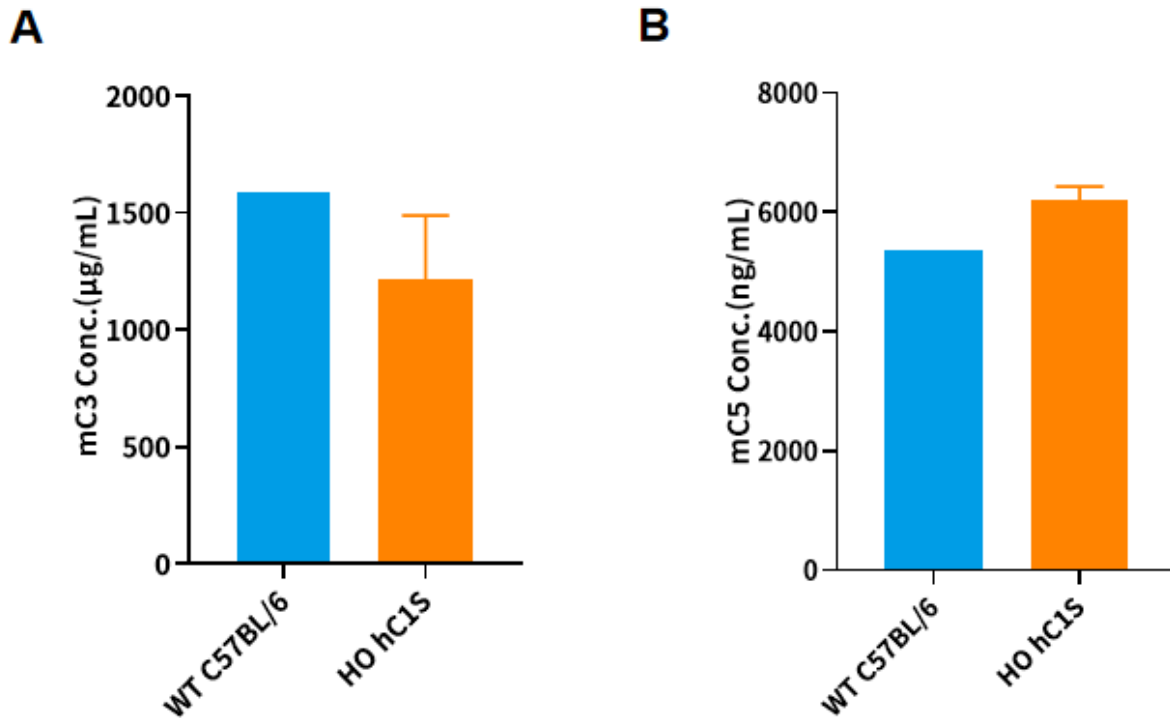
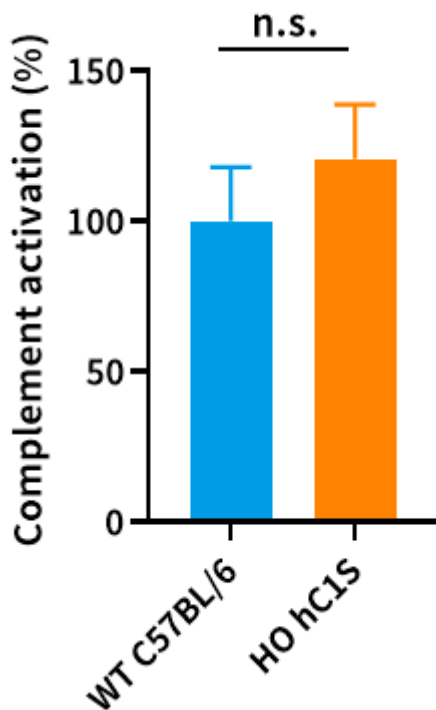


Fig2. Detection of hc1S1 expression in serum by ELISA (n=8). Abbr. HO, homozygous; WT, wild type.



**Fig3. Detection of mC3 and mC5 expression in serum hC1S1 mice by ELISA (n=3).** Abbr. HO, homozygous; WT, wild type.



**Fig .4** Detection of classical complement pathway activity in hC1S mice by ELISA.

Abbr. HO, homozygous; WT, wild type; PC, Postive Control; NC, Negative Control. Unpaired t test were used, n.s.  $p>0.05$ .

